

Gray & Taft AREA RECONSTRUCTION



REBUILD HOUSTON

April 6, 2016



Presentation Roadmap

1. What is ReBuild Houston?
2. Overview of the Project
3. Next Steps
4. Contact information



What is ReBuild Houston?

Approved by voters in 2010

Pay-as-you-go approach = No new debt!

Greatest need areas first



ReBuild Houston Goals

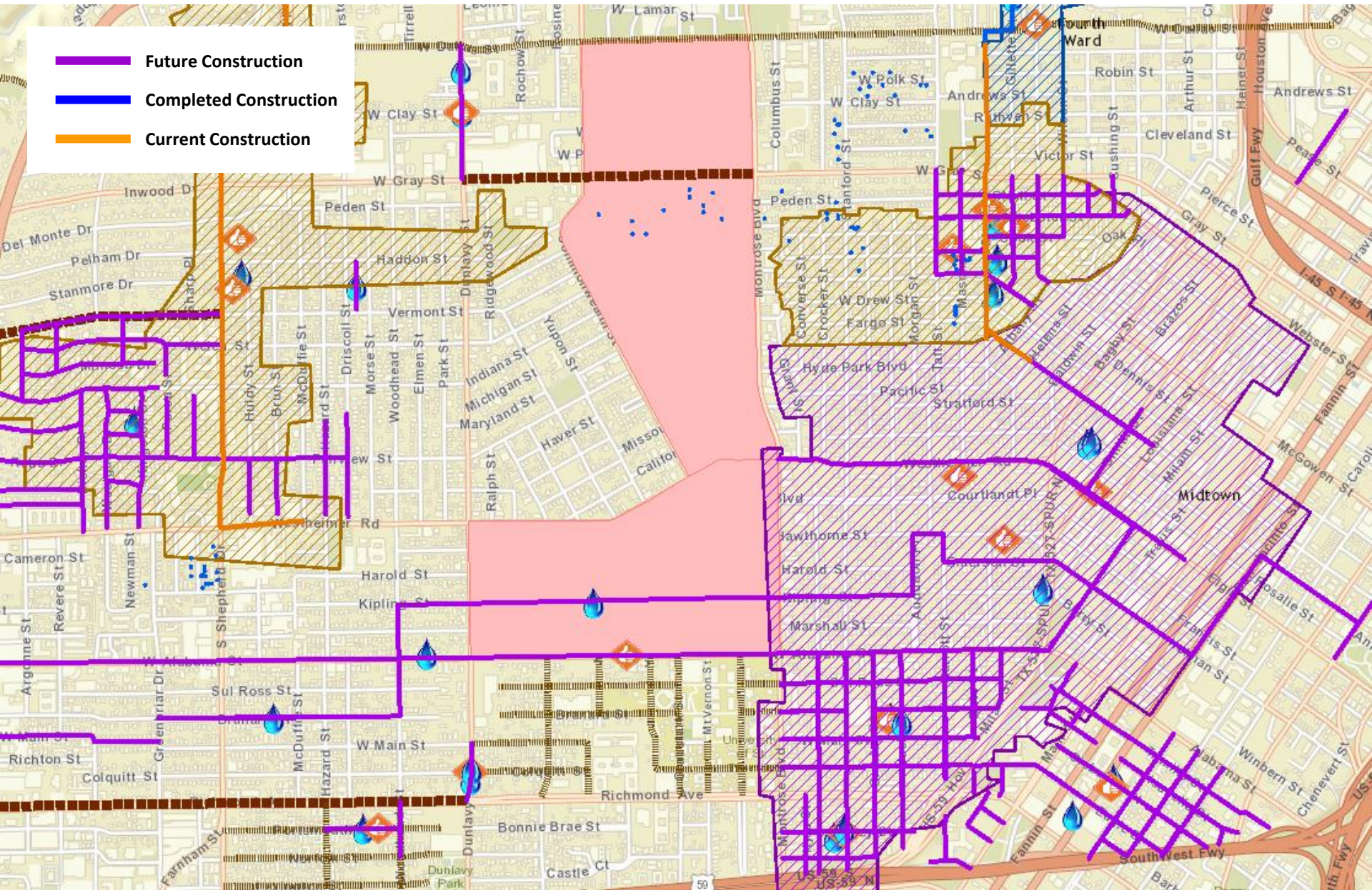
Reduce impact of flooding

Improve mobility

Quality of life



www.RebuildHouston.org



Gray & Taft Area – Current Conditions



Poor Pavement Condition



Missing/Incomplete/Narrow Sidewalks



Gray & Taft Area – Priorities



Improve pavement condition



Improve traffic mobility and on-street parking



Improve pedestrian safety and accessibility



Improve storm, water and sewer systems

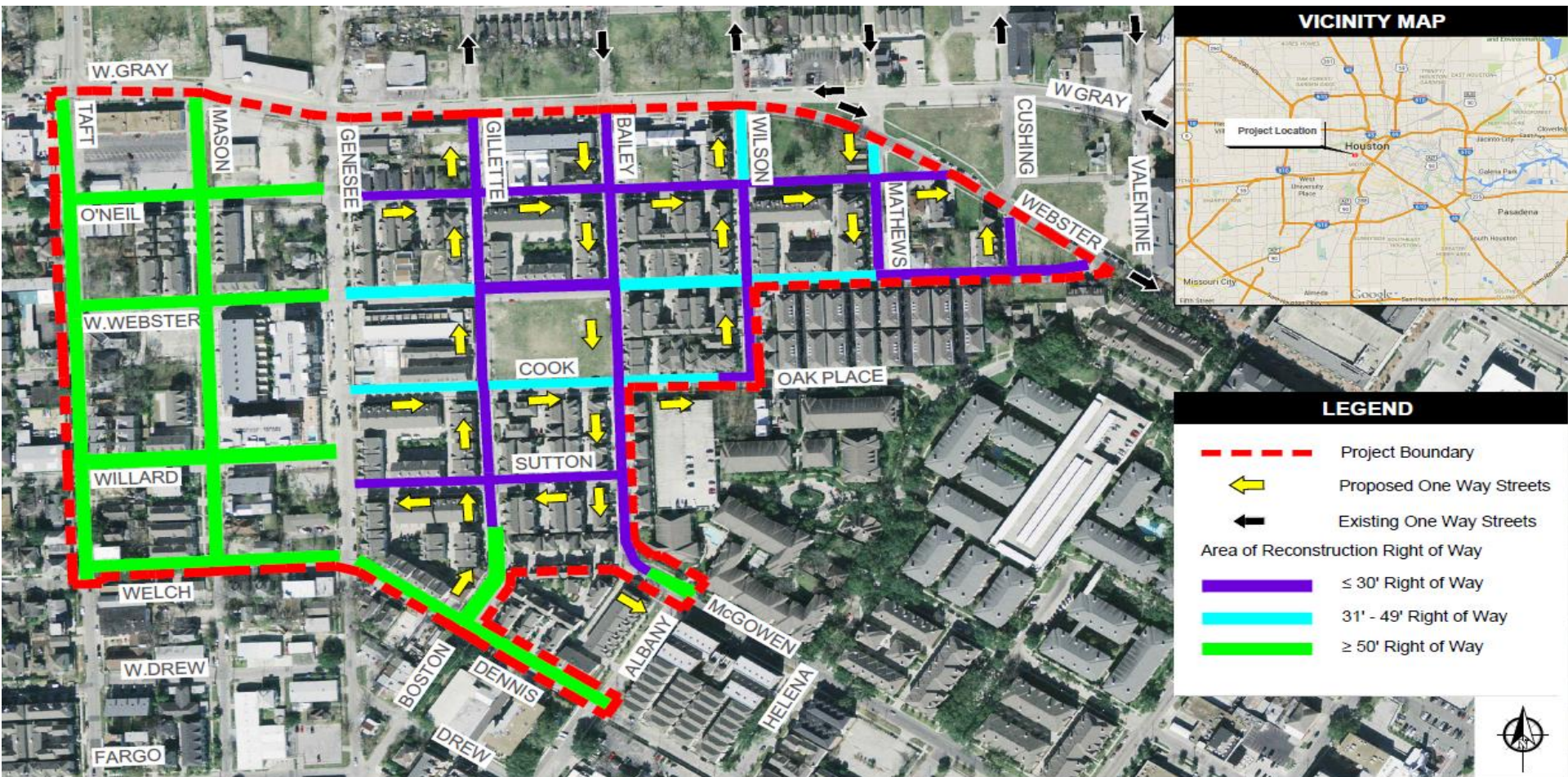


Gray & Taft Area Reconstruction

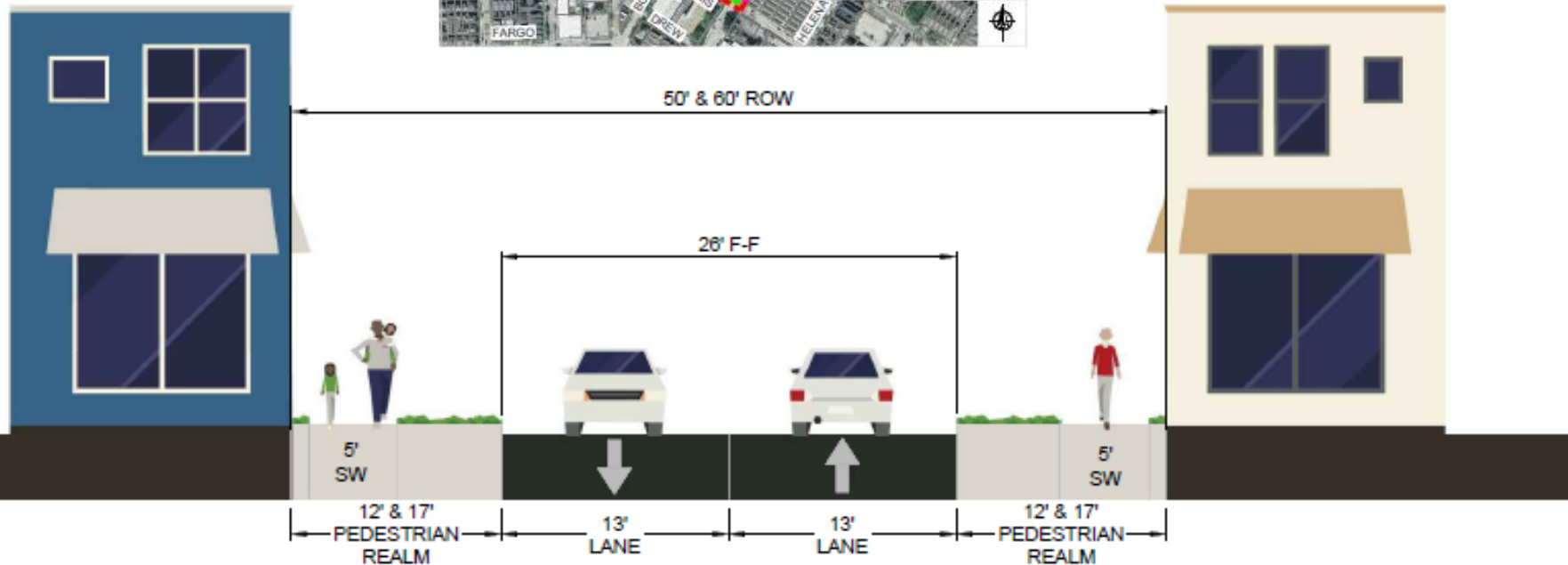
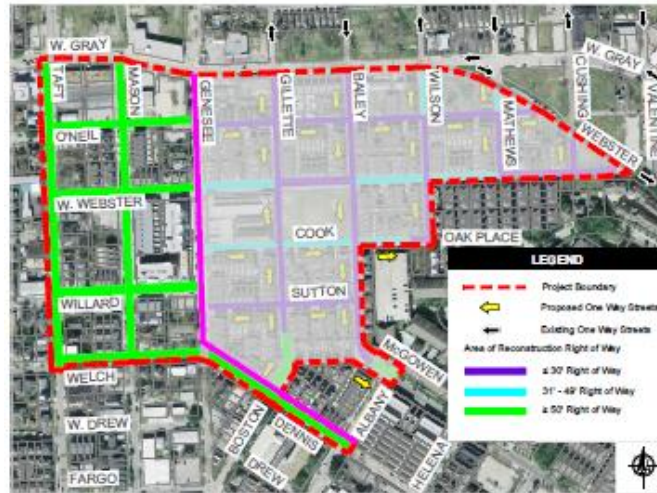
CIP Project Number N-210008

Design: 2016

Construction: 2020



50-60 foot Right of Way - Proposed



W. WEBSTER ST. (26' F-F)
TAFT ST. TO GENESEE ST.

WELCH ST. (26' F-F)
TAFT ST. TO GENESEE ST.

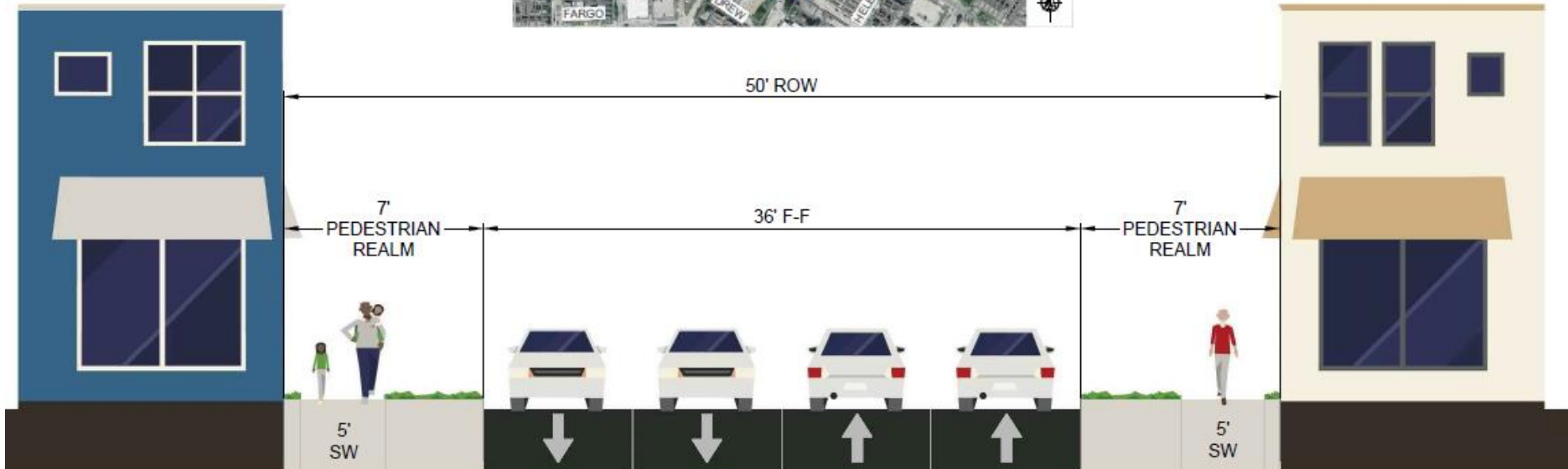
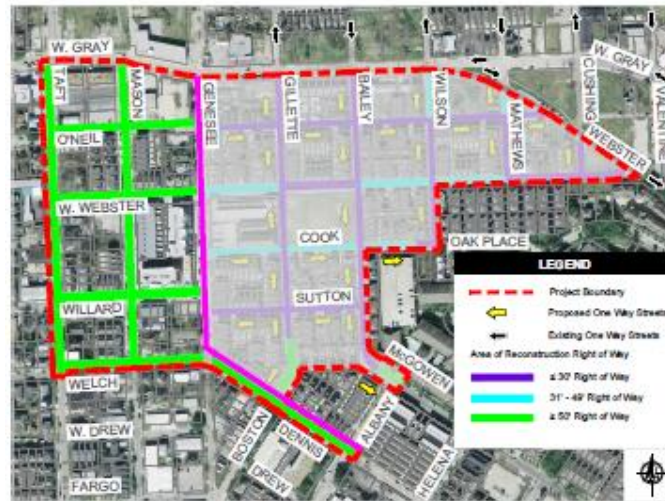
O'NEIL ST (26' F-F)
TAFT ST. TO GENESEE ST.

TAFT ST. (26' F-F)
WELCH ST. TO W. GRAY ST.

DENNIS ST. (26' F-F)
GENESEE ST. TO ALBANY ST.

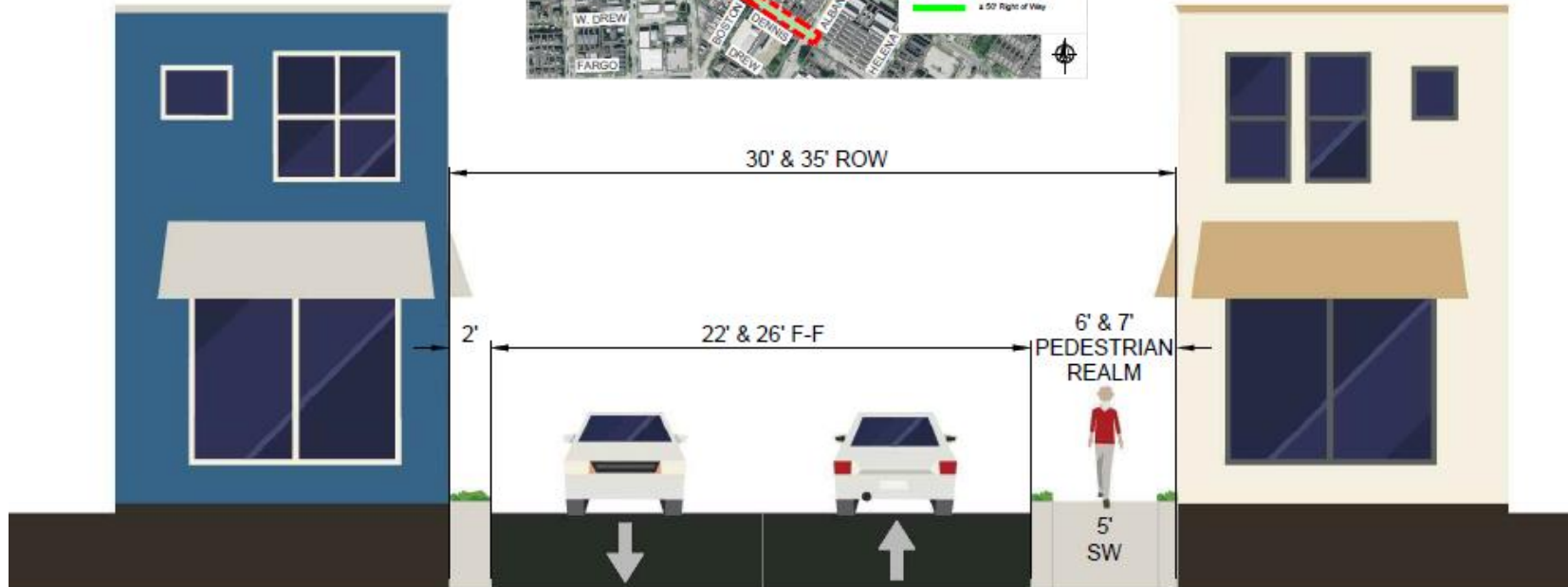
MASON ST. (26' F-F)
WELCH ST. TO W. GRAY ST.

50 foot Right of Way - Proposed



WILLARD ST. (36' F-F)
TAFT ST. TO GENESSE ST.

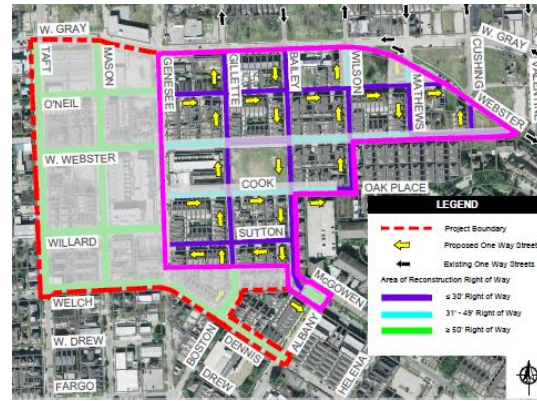
30-35 foot Right of Way – Proposed



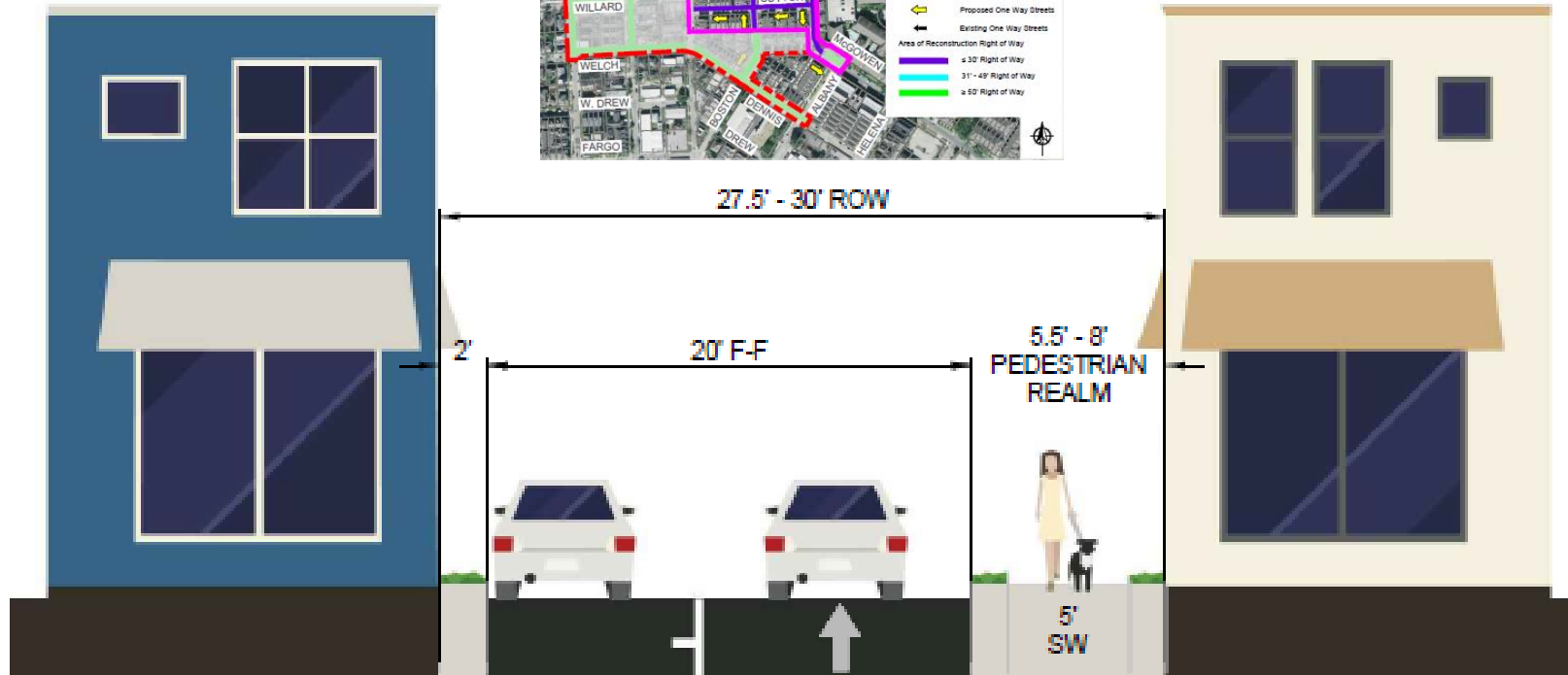
W. WEBSTER ST. (26' F-F)
GENESEE ST. TO MATHEWS ST.

W. WEBSTER ST. (22' F-F)
MATHEWS ST. TO WEBSTER AVE.

27-30 foot Right of Way – Proposed



27.5' - 30' ROW

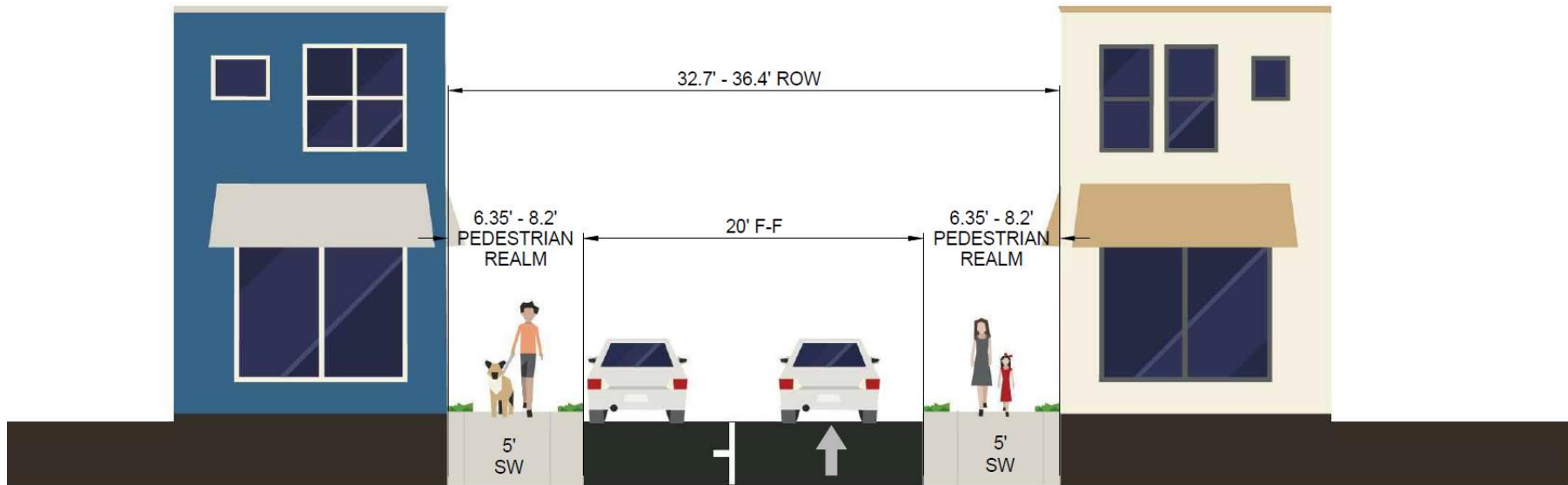
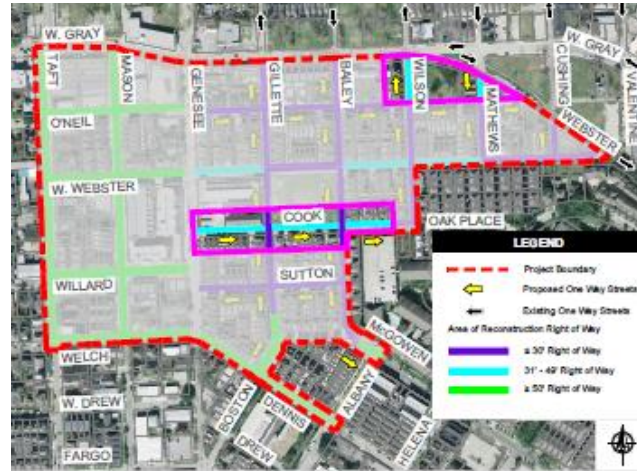


SUTTON ST. (20' F-F)
 GENESEE ST. TO BAILEY ST.
BAILEY ST. (20' F-F)
 MCGOWEN ST. TO W. GRAY ST.
O'NEIL ST. (20' F-F)
 GENESEE ST. TO WEBSTER AVE.

WILSON ST. (20' F-F)
 COOK ST. TO O'NEIL ST.
CUSHING ST. (20' F-F)
 W. WEBSTER ST. TO WEBSTER ST.
COOK ST. (20' F-F)
 ≈70' WEST OF WILSON ST. TO WILSON ST.

GILLETTE ST. (20' F-F)
 BOSTON ST. TO W. GRAY ST
MATHEWS ST. (20' F-F)
 W. WEBSTER ST. TO O'NEIL ST.

33-36 foot Right of Way – Proposed

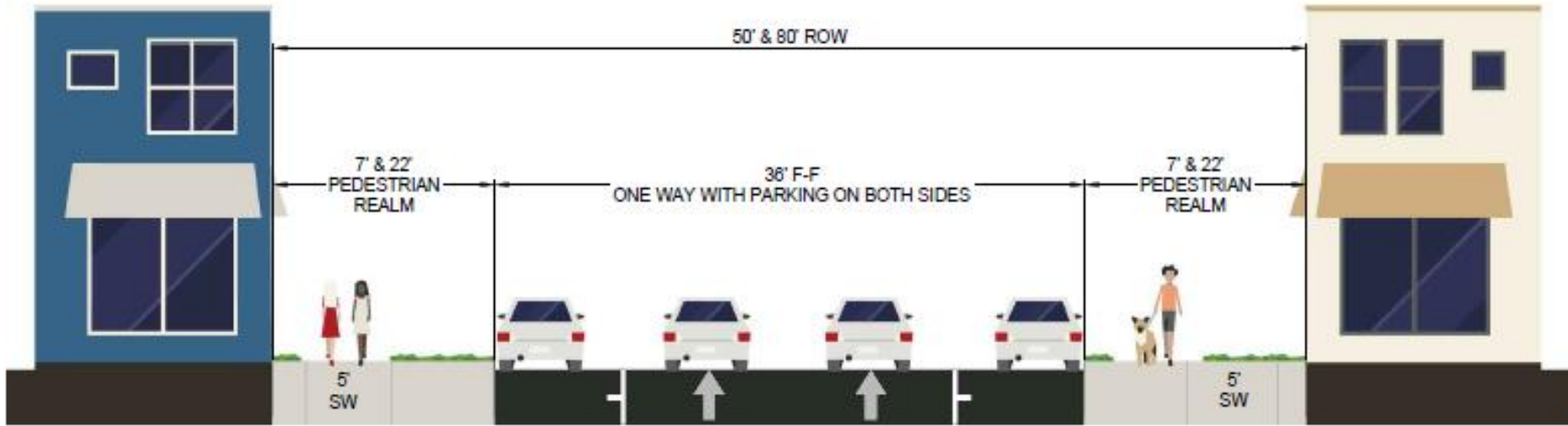


WILSON ST. (20' F-F)
O'NEIL ST. TO W. GRAY ST.

COOK ST. (20' F-F)
GENESSE ST. TO ≈70' WEST OF WILSON ST.

MATHEWS ST. (20' F-F)
O'NEIL ST. TO W. GRAY ST.

50 - 80 foot Right of Way - Proposed



McGOWEN (36' F-F)
SOUTH OF BAILEY ST. TO ALBANY ST.

BOSTON/GILLETTE ST. (36' F-F)
NORTH OF DENNIS TO SOUTH OF GILLETTE

Gray & Taft Area – Proposed Improvements



Reconstruct streets with asphalt

Convert narrow two-way streets to one-way streets with street-side parking



Reconstruct sidewalks and ramps to meet ADA requirements



Replace storm, water and sewer systems as necessary



Next Steps

Gray & Taft Area Reconstruction

2014
Planning

2017
Design

2020
Scheduled
Construction

2022
Scheduled
Completion

Timeline subject to change

We Welcome Your Input

COMMENT CARD

Date _____

Please fill in all information:

Name _____

Address _____

Email _____

Do you have a question or concern? Let us know.

What is the best way to contact you? Mail Email

WAYS YOU CAN COMMENT:

- Fill out a comment card tonight!
- Email us your comments at:
pweplanning@houstontx.gov
- Visit: www.RebuildHouston.org

Submitting your input on or before **MAY 6th 2016** will help us stay on schedule

