

# Welcome



**WE ARE GLAD  
YOU ARE HERE**





# About The Project

## **Memorial Paving and Drainage Improvements**

The project will include:

- Reconstructed roadway with curbs and gutters
- Reconstructed sidewalks, driveways and curb ramps
- Reconstructed storm sewer, sanitary sewer, and waterlines
- Replacement of the bridge at Turkey Creek with a triple 10'X10' bridge rated box culvert structure
- New traffic signal systems

**The project will:**

### **• Improve mobility**

- The roadway improvements will enhance the area as well as the ride through this section of Memorial

### **• Reconstruct existing and add new sidewalks where there are currently no sidewalks**

- Proposed sidewalks will be a minimum of 5 feet wide

### **• Reconstruct drainage system, sanitary sewer and waterlines**

- Proposed storm sewer system consists of 4 separate drainage systems that will replace the existing storm sewer and open ditch drainage systems
- Proposed sanitary sewer system will upgrade the existing system
- Waterlines will be upgraded along with a 24-inch water main will be realigned from the current aerial crossing at Turkey Creek to an alignment under Turkey Creek and the proposed box culvert bridge.

### **• New traffic signal systems**

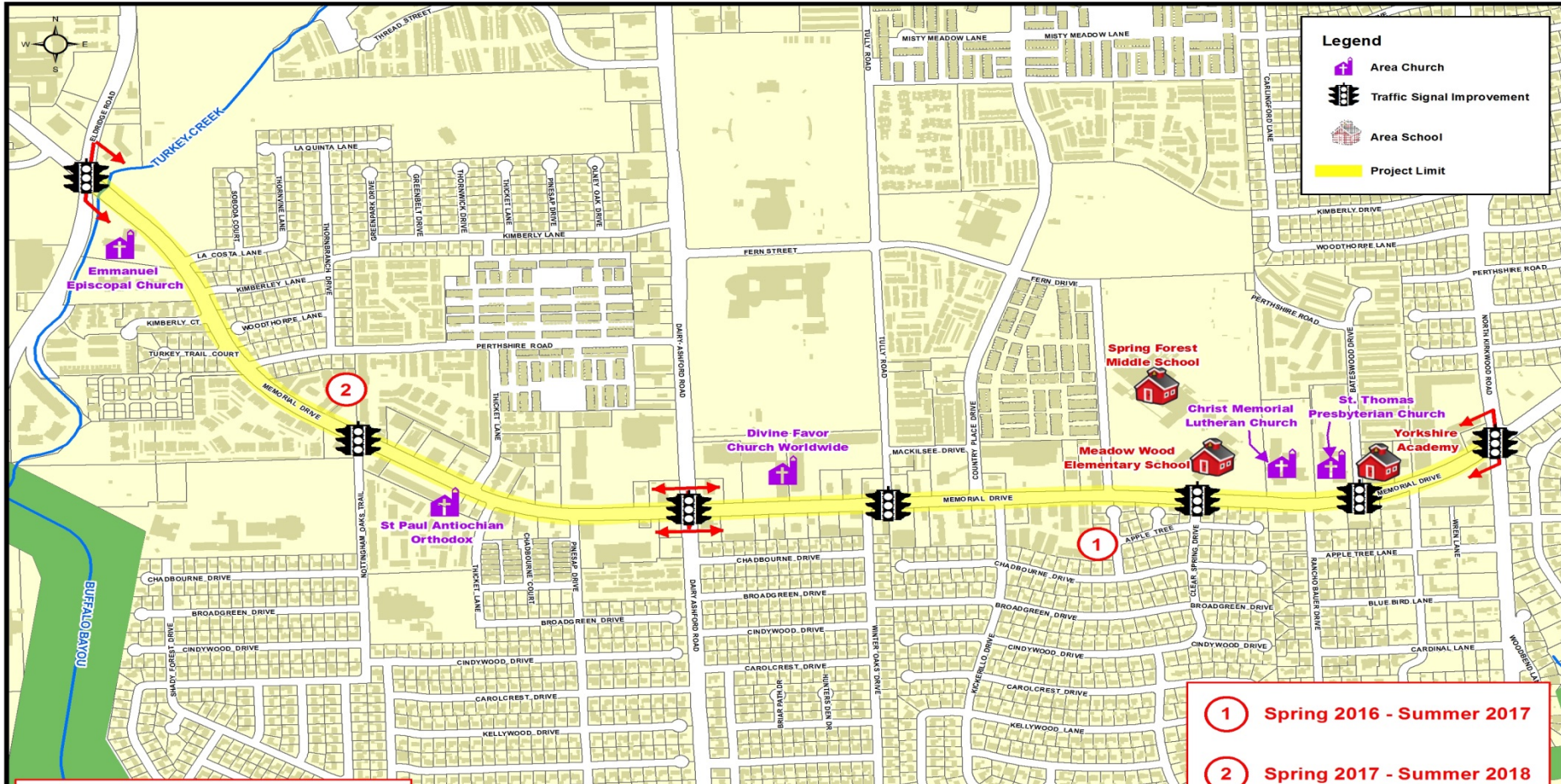
- The cable suspended traffic signals will be replaced with mast arm traffic signals at North Kirkwood, Bateswood Rd., Clear Springs Dr., Tully Rd., Nottingham Oaks, and North Eldridge Parkway.

In addition the existing pole and mast arm traffic signal at Dairy Ashford will be upgraded.



# Project Map

## Reconstruction of Memorial Drive from Eldridge Pkwy to Kirkwood Rd N-00798-0001-4



# *Construction In Your Neighborhood*



## *Frequently Asked Questions*

<http://www.publicworks.houstontx.gov/e cd/faq s.html>



# My Project Information

- **Keep your door hanger throughout the project**
  - Lists phone numbers you need
  - Lists the “WBS” Project Number
    - WBS Number needed when you call or write us
- **Meet your Job Superintendent or Inspector**
  - Will be your contact to resolve issues throughout construction
- **Construction will occur in City right-of-way**
  - City right-of-way generally extends 10 to 15 feet into your yard



# How To Report a Problem



**3-1-1**

- Report the WBS Number
- Request complaint be directed to PWE Engineering and Construction Division
- Be as complete as possible with your concern



**PWECIP@houstontx.gov**



# Before Construction

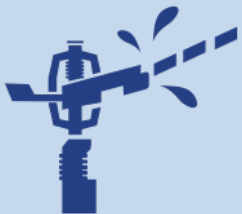
## *How to Prepare*

- Document the conditions of your yard and sprinkler head locations; the contractor will too
- Remove special landscaping features (i.e., fountains, lawn art)
- Find alternative parking
- Plan for water service interruption of landscaping
- Be mindful of protective barriers
- Understand the scope of the work



# Sprinkler Systems

- Tip: Photograph your sprinklers while they are “on”.
  - Shows the location and the number in the right-of-way
- Contractor will try to protect your system during construction
- Have a backup plan – water may be cut off accidentally
- If damaged, contact 3-1-1 or Job Inspector

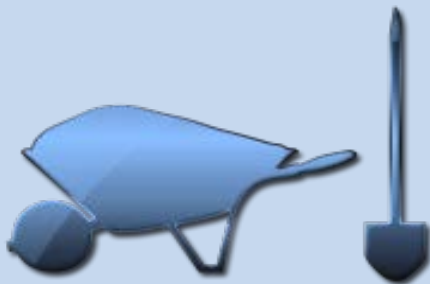






# Landscaping

- Relocate special landscaping features that exist in the yard/City right-of-way (i.e., waterfalls, garden gnomes)
- Grass will be restored upon completion of all construction





# Markers & Protective Barriers

- Please do not remove construction barriers or markers
  - Marks right-of-way
  - Protects trees
  - Placed to protect the citizens and the contractor
- Contractor to restore disturbed area





# Understand the Scope

- Waterline replacement: generally minimal ground disturbance
  - Temporary street closures
  - Water service interruptions
- Street reconstruction: larger scope
  - Longer-term full or partial closures of streets – emergency access will not be impaired
  - Sidewalks
  - Driveway aprons





# Sidewalks and Bike Paths

- Existing sidewalks will be reconstructed to 5 feet wide
- New sidewalks will be constructed where there are currently no sidewalks
  - Residents to maintain sidewalks once constructed
  - Locations of the sidewalks may vary due to obstructions
  - Attempt to avoid tree removal





# Driveways

- Driveway aprons will be reconstructed
- If construction is needed beyond the apron, the City will request a right-of-entry from property owner





# Street Elevation

- Street elevation may change
  - Facilitate drainage
  - Accommodate for natural ground shifting over the past several decades





# During Construction

## *What to Expect*

- Potential water service impacts
- Potential parking/driveway access impacts
- Trash/recycling receptacle location impacts
- Tree removal/replacement per plan
- Potential for school bus re-routes
- Reporting property damage
- Temporary Metro Bus Stops



# Water Service

## Potential for service interruption:

- Waterline replacement - notification 24 to 48 hours in advance
  - Periodic
  - May last 2 to 4 hours
- Accidental – contractor will work quickly to restore







# Parking and Driveway Access

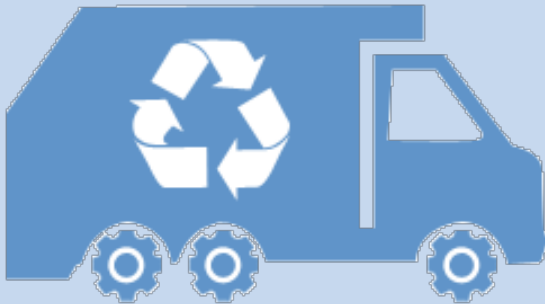
- Short-periods of limited access to your driveway
  - Park elsewhere and walk to your home
  - Contact us immediately if needing handicapped access
- Short-periods of no on-street parking
  - Construction will alternate each side of the street on different schedules
  - Suggest working with neighbors on the opposite side – they may need your help when it's their turn.





# Trash/Recycling Pick Up

- Construction will alternate each side of the street on different schedules
- Waste receptacles should be placed on the non-affected side of the street





# Trees

- Goal is to protect all trees
  - Work with City Arborist
  - Unhealthy trees will be removed
- Some trees may be removed as part of the project
  - New trees may be planted elsewhere in the project area, per plan
- Report damage to 3-1-1 or Job Inspector





# School Buses

The City of Houston and the Contractor work with all schools to minimize impacts to students, school bus schedules, and school bus stops

School buses may need to use different streets temporarily





# Property Damage

- Contractor is required to take pre-construction photos
- If you believe there is damage:
  - Document
  - Call 3-1-1
- City and contractor will compare the pre-construction photos with current condition





# When Construction is Complete

## *What to Expect*

- There IS an end to construction!
- Restoration
- Final job walk



# Restoration

- Restoration of sprinkler systems, grass, etc. when construction is complete
  - City does not approve final payment to contractor until restoration is complete
  - If concerns:
    - Document (writing, photo, etc)
    - Call 3-1-1
    - Do not make the repairs yourself





**Lastly.....**

*Enjoy the improvements!*

*These are your tax dollars at work.*

*The Department of Public Works and Engineering  
is proud to serve*



# *The Department of Public Works & Engineering*



## THANKS YOU FOR COMING

