



Freeway Manor | Gulfway Terrace Reconstruction Projects

Mark Loethen, *P.E., CFM, Deputy Director*



AGENDA

1 OVERVIEW OF THE PROJECT

2 NEXT STEPS

3 CONTACT INFORMATION





Freeway Manor | Gulfway Terrace Area Reconstruction Project

M-410008: Examples of Current Conditions



Drainage/Pavement/Bike Lane

Freeway Manor | Gulfway Terrace Area Reconstruction Project

Identified Improvement Needs



Improve storm drainage



Improve water and wastewater as needed



Improve pavement conditions



Pedestrian safety and accessibility



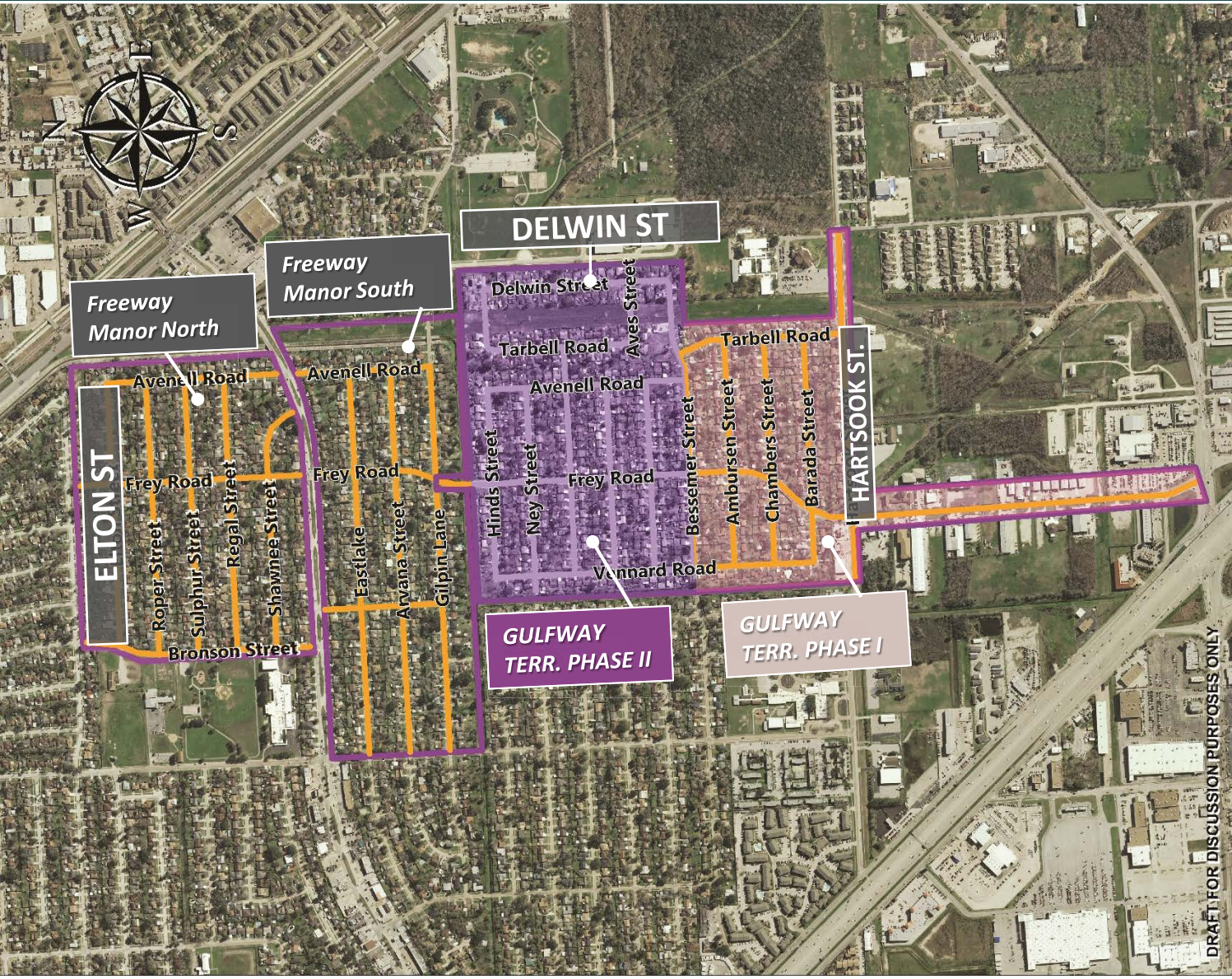
Improve existing bike lanes





Freeway Manor | Gulfway Terrace Area Reconstruction Project

Frey Rd. and the intersecting streets between Elton Street to the north, Delwin Street to the East, and Hartsook Street at the south



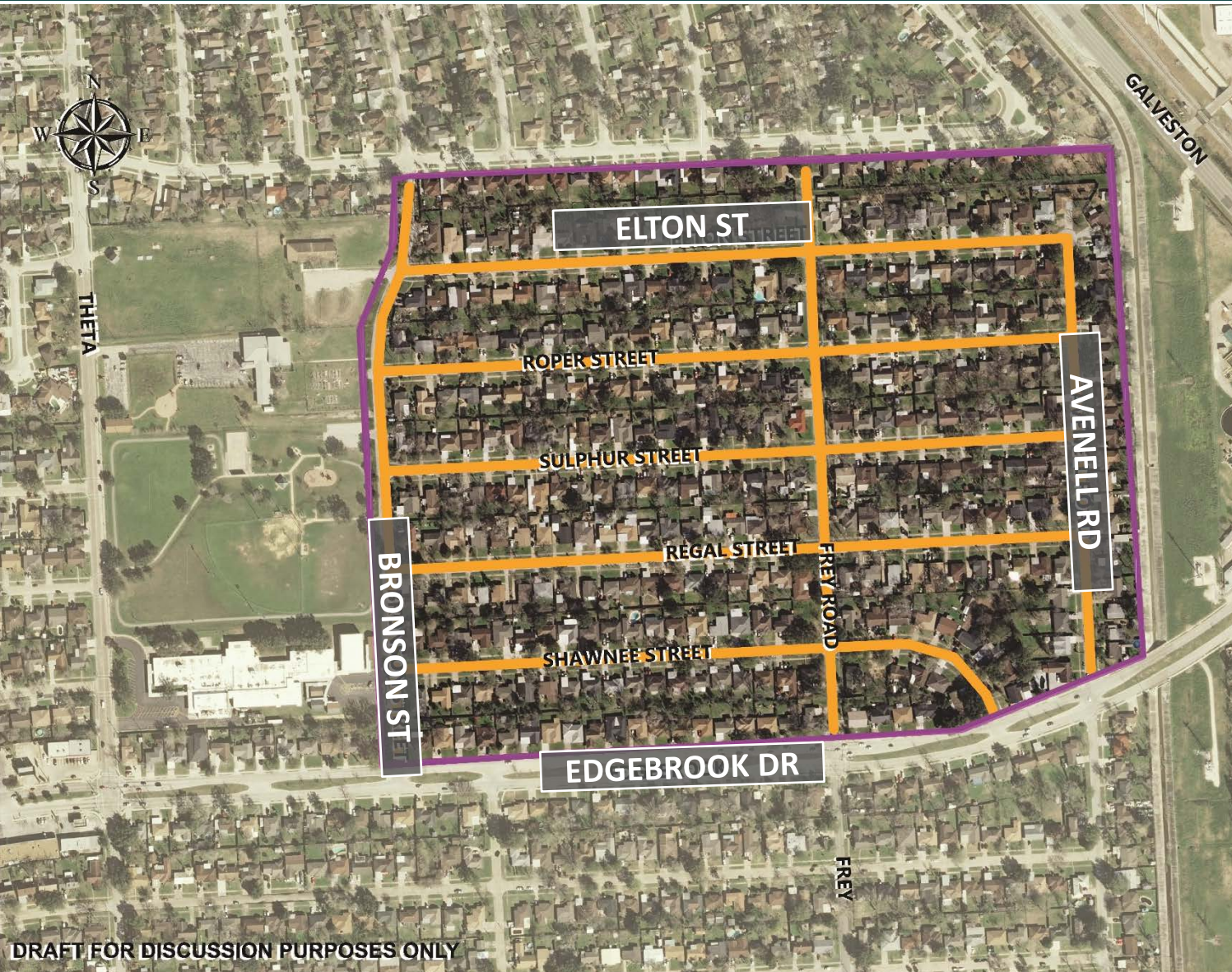
LEGEND



	PROJECT BOUNDARY
	PROPOSED PAVEMENT
	Phase II
	Phase I

DRAFT FOR DISCUSSION PURPOSES ONLY

Freeway Manor | Gulfway Terrace Area Reconstruction Project

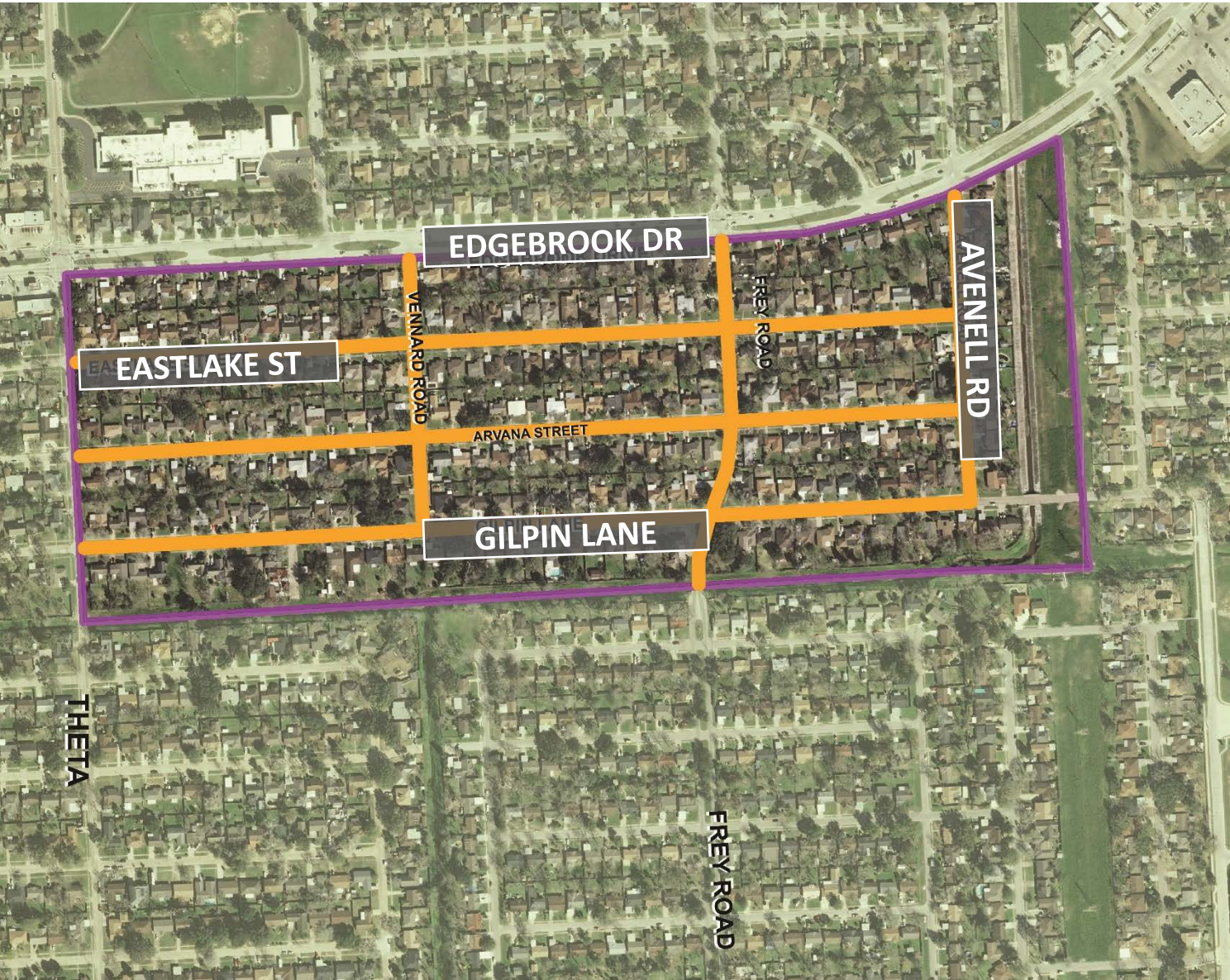
Freeway Manor North Map Detail: Frey Rd. and intersecting streets between Elton St. to the north, Avenell Rd. to the east, Edgebrook Dr. to the south and Bronson St. to the west





LEGEND	
	PROJECT BOUNDARY
	PROPOSED PAVEMENT

Freeway Manor | Gulfway Terrace Area Reconstruction Project

Freeway Manor South Map Detail: Frey Rd. and intersecting streets between Edgebrook to the north, Avenell to the east, Gilpin Ln. to the south, with the boundary ending just east of Theta

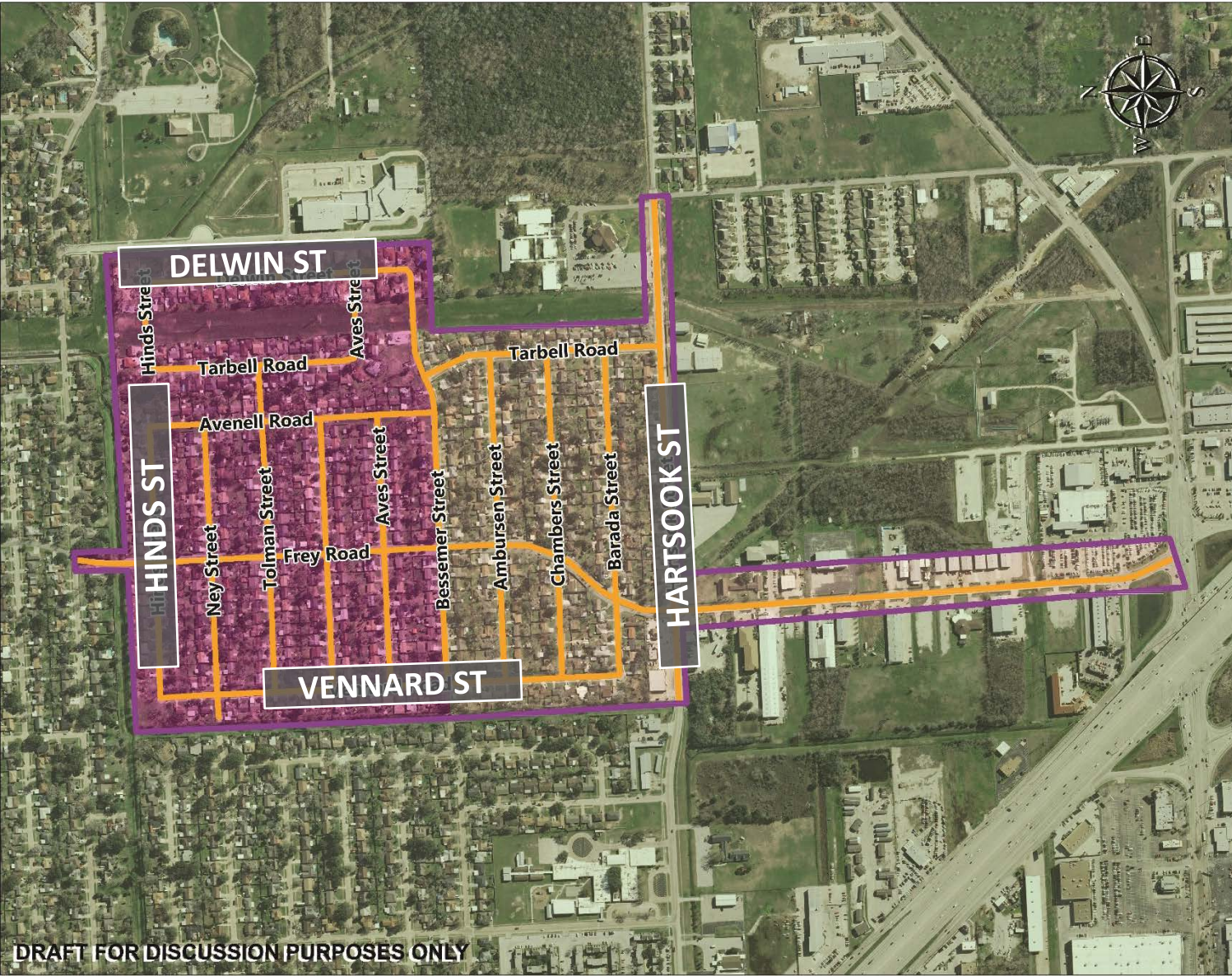





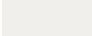
LEGEND

	PROJECT BOUNDARY
	PROPOSED PAVEMENT

Freeway Manor | Gulfway Terrace Area Reconstruction Project

Gulfway Terrace Map Detail: Gulfway Terrace will be constructed in two phases. Phase I ends at begins at Hinds St. to the north and ends at Bessemer St. Phase II begins at Bessemer St. and extends just beyond Hartsook St.



LEGEND	
	PROJECT BOUNDARY
	PROPOSED PAVEMENT
	Phase II
	Phase I

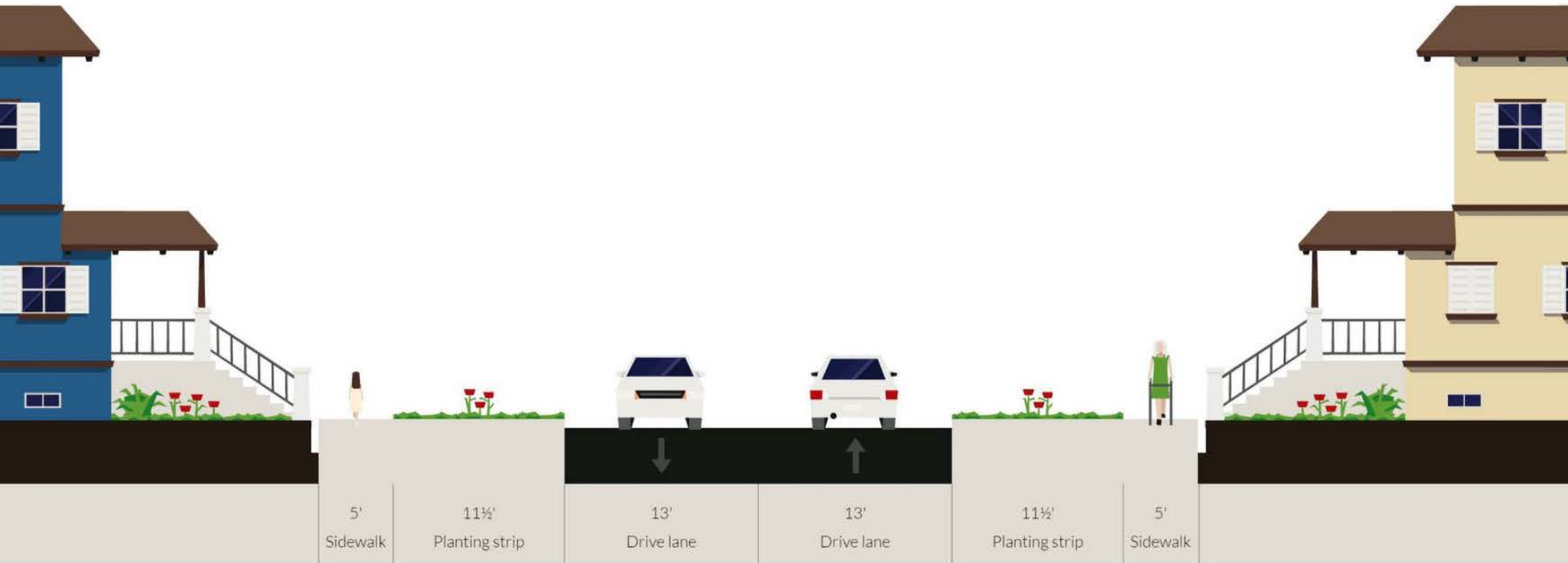
What are we doing to improve your drainage?



ILLUSTRATION FOR EDUCATIONAL PURPOSES ONLY

Freeway Manor | Gulfway Terrace Area Reconstruction Project

Proposed Cross Section - Typical Neighborhood Street, 60-ft right-of-way



TEMPORARY VISUAL FOR DISCUSSION PURPOSES ONLY

Freeway Manor | Gulfway Terrace Area Reconstruction Project

Existing Cross Section - Frey Road from the Bridge to Hartsook



Freeway Manor | Gulfway Terrace Area Reconstruction Project

Proposed Cross Section - Frey Road from Edgebrook Drive to Shaver Road



TEMPORARY VISUAL FOR DISCUSSION PURPOSES ONLY

Freeway Manor | Gulfway Terrace Area Reconstruction Project Phase I

Freeway Manor North & South



Gulfway Terrace – Phase I

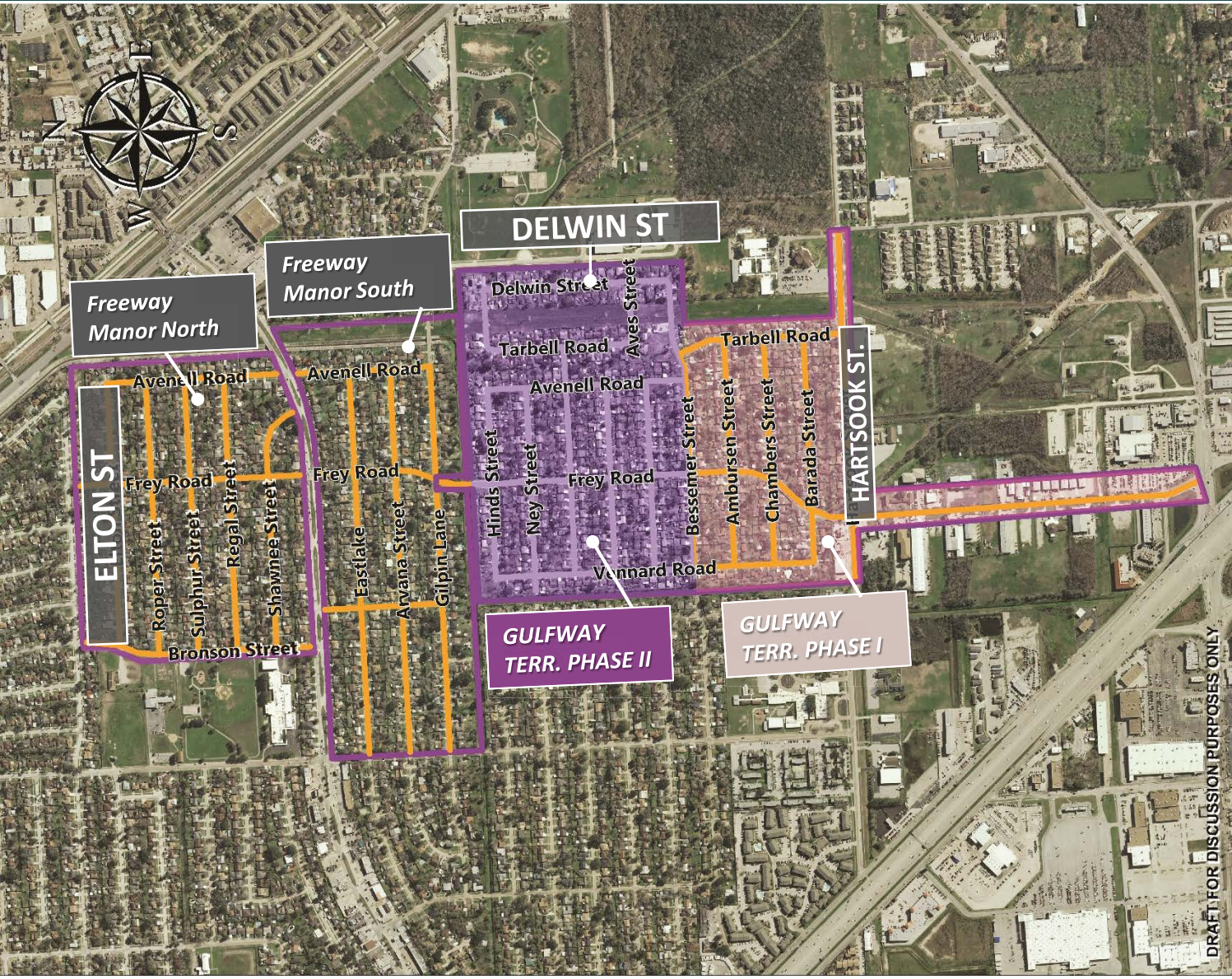


Timelines subject to change




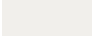


Freeway Manor | Gulfway Terrace Area Reconstruction Project

Frey Rd. and the intersecting streets between Elton Street to the north, Delwin Street to the East, and Hartsook Street at the south

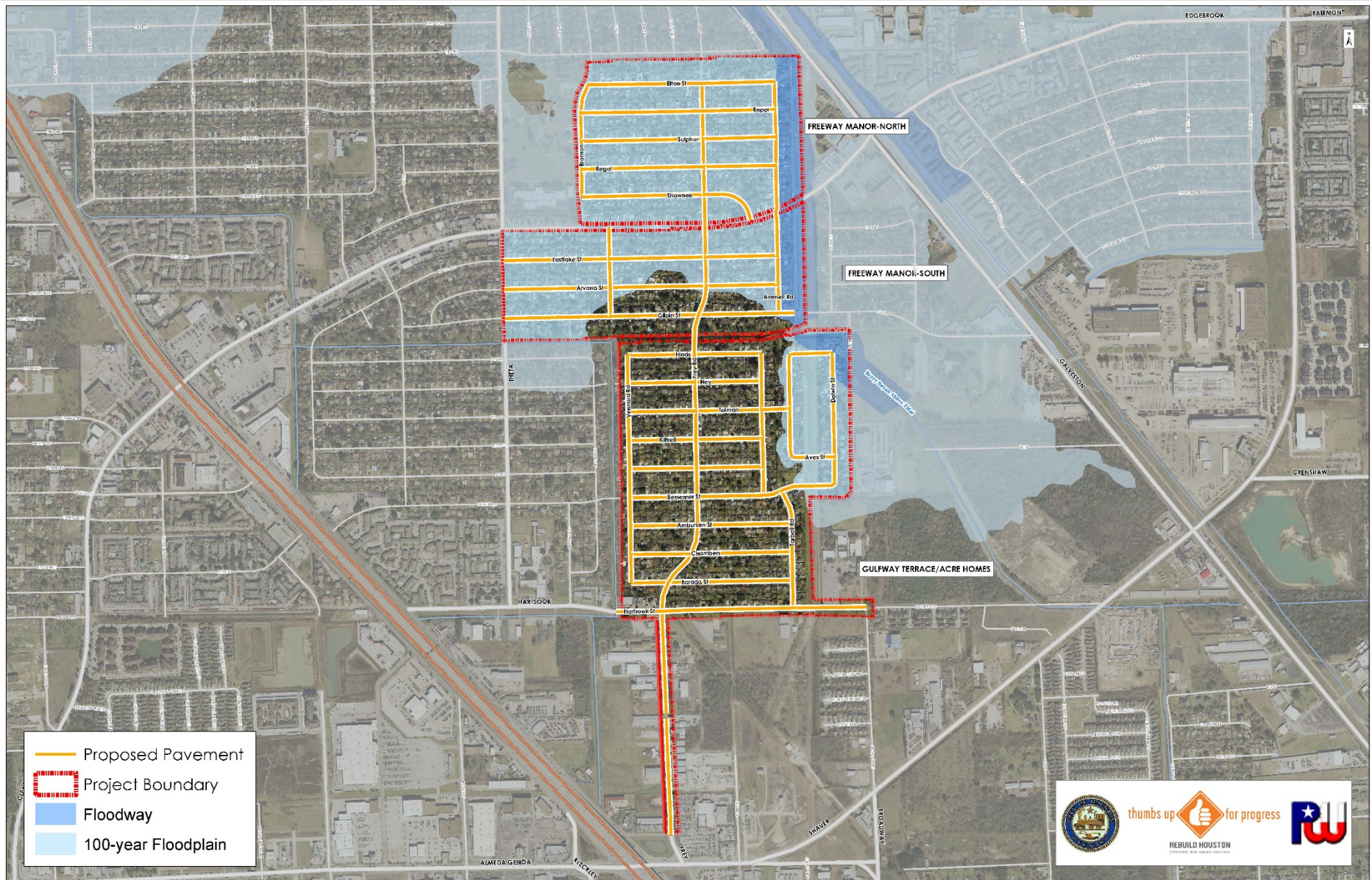


LEGEND

	PROJECT BOUNDARY
	PROPOSED PAVEMENT
	Phase II
	Phase I

DRAFT FOR DISCUSSION PURPOSES ONLY

Floodway and Floodplain Map



We Want Your Input

Fill out a comment card tonight

Or email us your comments at:
pweplanning@houstontx.gov
www.RebuildHouston.org

YOUR INPUT BY
August 29, 2016
WILL HELP US STAY ON SCHEDULE





THANK YOU

Please leave your comment cards at the sign-in table.

