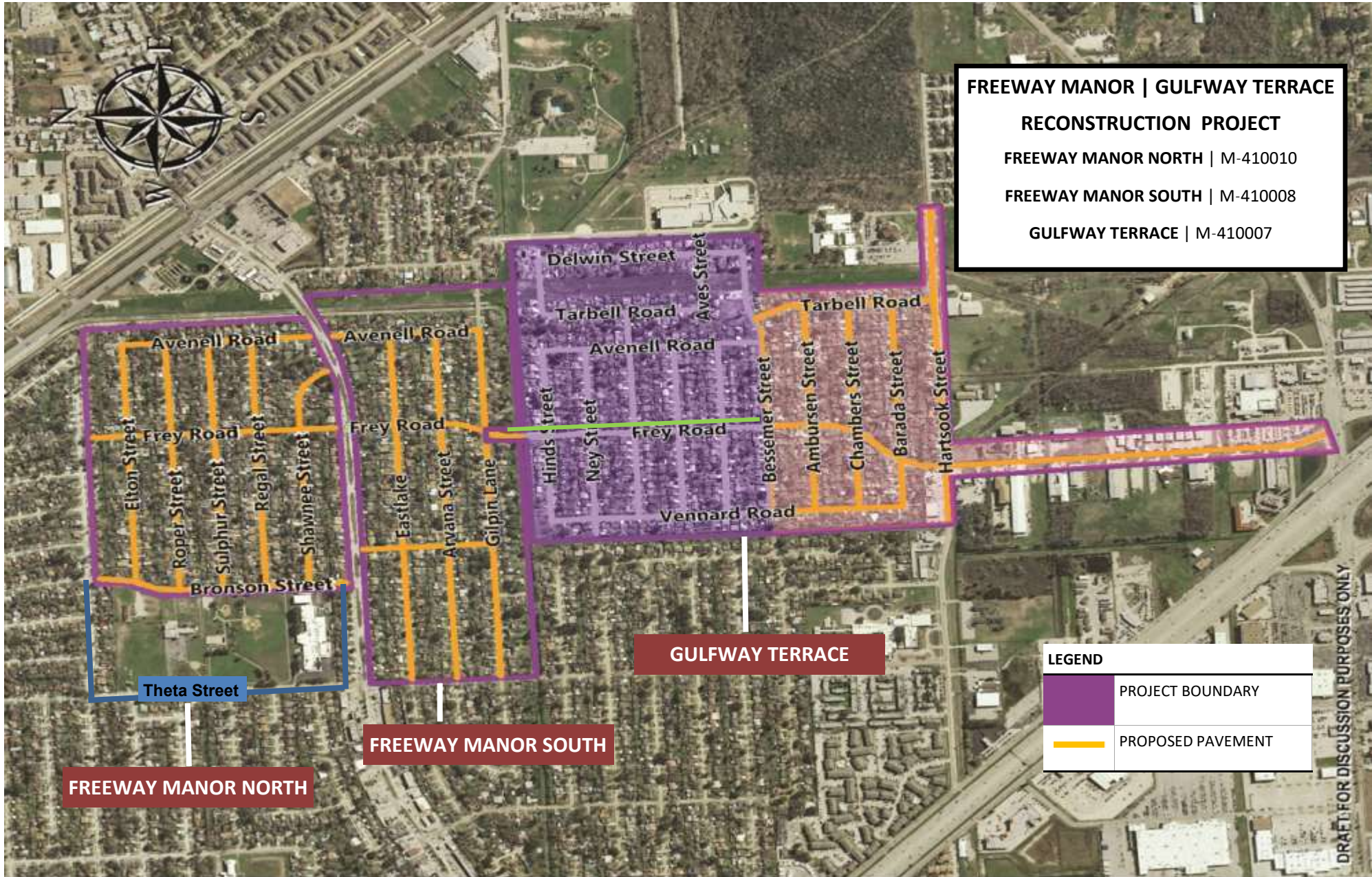
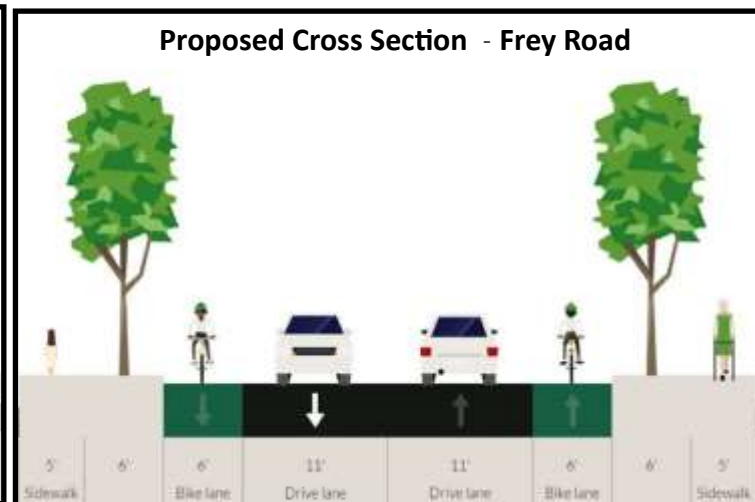
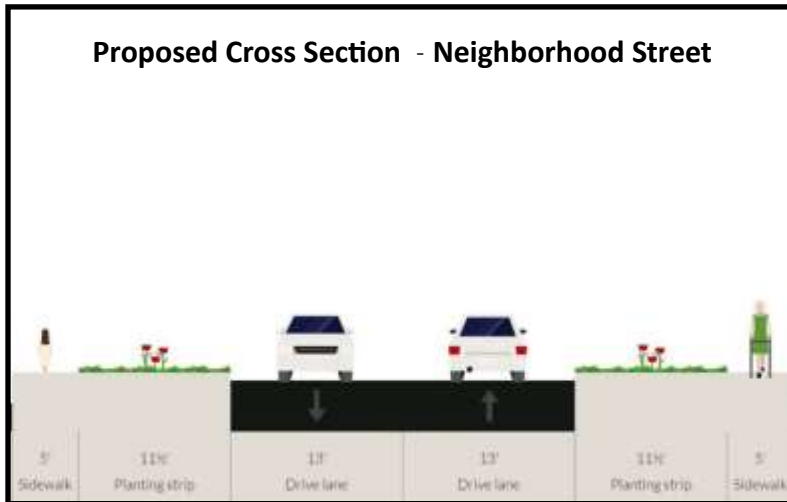


FREEWAY MANOR | GULFWAY TERRACE RECONSTRUCTION PROJECT



This project provides drainage improvements, reconstruction of new street pavement, 5-foot sidewalks with crosswalks to meet ADA standards on all streets, and underground sanitary sewer lines as needed. All work will be done within the existing right-of-way. The project boundaries are: Globe St. (north), just south of Hartsook St. (south), Berry Bayou (east) and Theta St. (west).





What are we doing to improve your drainage?



ILLUSTRATION FOR EDUCATION PURPOSES ONLY
 DRAFT FOR DISCUSSION PURPOSES ONLY. SUBJECT TO CHANGE.

For questions or comments about this project please contact us at: info.rebuildhouston@houstontx.gov