



**Thursday, July 30**

**6:00-8:00PM**

**Open House - 6:00PM**

**Presentation - 6:30PM**

**Saint Stephen's**

**Episcopal Church**

**1805 W. Alabama St.**

**Houston, TX 77098**

# W. ALABAMA RECONSTRUCTION

WESLAYAN STREET TO ALMEDA ROAD

## PUBLIC MEETING

*The Department of Public Works & Engineering invites you to an open house and presentation about the reconstruction of W. Alabama Street (N-000751; N-100020).*

This meeting will focus on four areas:

- Segment 1: Wesleyan St. to Buffalo Speedway
- Segment 2: Buffalo Speedway to Shepherd Dr.
- Segment 3: Shepherd Dr. to Spur 527
- Segment 4: Spur 527 to Chenevert St.

Improvements will include reconstruction of the roadway, sidewalks, water, storm drainage, sewer infrastructure, and optional bike facilities. Input for final configuration is requested at this meeting.

For more information visit: [www.rebuildhouston.org](http://www.rebuildhouston.org)







# WEST ALABAMA





# Presentation Roadmap

1. What is ReBuild Houston?
2. Overview of four
3. **Segment One** (Weslayan to Buffalo Speedway)
  - Priorities
  - Current Conditions
  - Project Highlights
  - Bike lane/Shared use path
4. Next Steps
5. Contact information



# What is ReBuild Houston?

- **Approved by voters in 2010**
- **Pay-as-you-go approach (no new debt)**
- **Greatest need areas first (with greatest benefit to communities)**





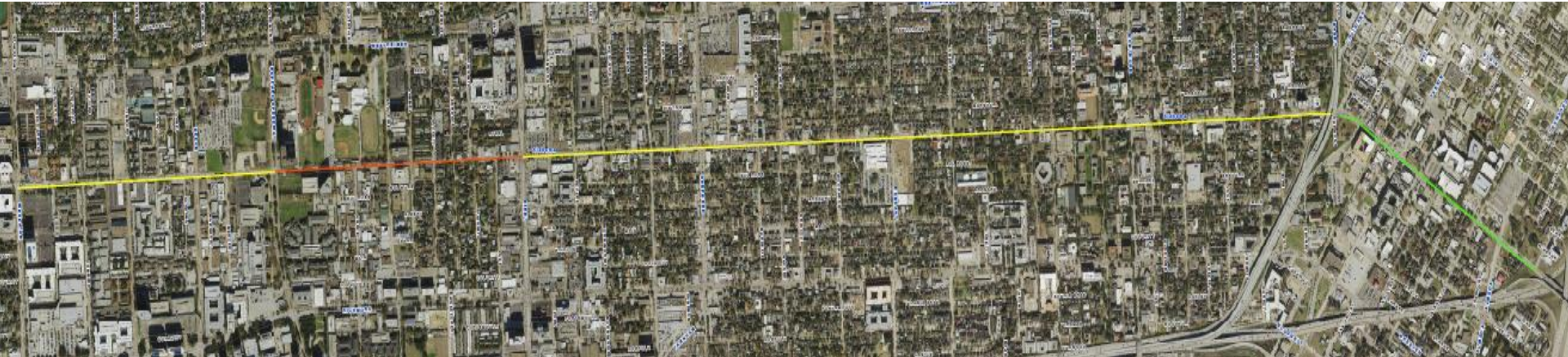
# ReBuild Houston Goals

- Reduce flooding
- Improve mobility
- Quality of life





# West Alabama Reconstruction





An aerial view of a park or public square. A person in a dark jacket and light pants is walking away from the camera on a dirt path, carrying a red bag. The path is bordered by green grass and young trees. To the right, there is a paved area with several wooden benches and a black lamppost. In the background, there are more trees, a fence, and some buildings.

**USER EXPERIENCE**

**DESIGN**



# Four Segments Planned

## Finalizing Design



**Weslayan to Buffalo Speedway** (*construction est. FY2016*)

## Seeking Community Input



**Buffalo Speedway to Shepherd** (*design not started*)



**Shepherd to Spur 527** (*construction est. FY2018*)



**Spur 527 to Chenevert** (*design not started*)





# Finalizing Design

## Weslayan to Buffalo Speedway

- In the Capital Improvement Plan
- Seeking to finalize design with community support
- Construction to start 2016



WESLAYAN ST

BUFFALO SPEEDWAY

# Priorities

## Weslayan to Buffalo Speedway



Lane Configuration



Bicycle Accessibility



Pedestrian Accessibility



Intersection Improvements



Storm Drainage Improvements

### Other Considerations:

- Street lighting
- Water and sewer





# Pavement Condition





# Sidewalk Accessibility





# Intersection at Timmons Ln.





# Storm Drainage





# Project Highlights

## Weslayan to Buffalo Speedway



Intersection improvements at Timmons



Increasing capacity of storm drainage line  
Water and sewer line replacement as needed



# Recommended Solution – Timmons Lane

- Existing right-of-way
- Proposed right-of-way
- New edge of pavement



- Realign Timmons through intersection
- Improve pedestrian accessibility
- Improve turning movements



# Project Highlights – cont.

## Weslayan to Buffalo Speedway



Revising lane widths



Bicycle facilities

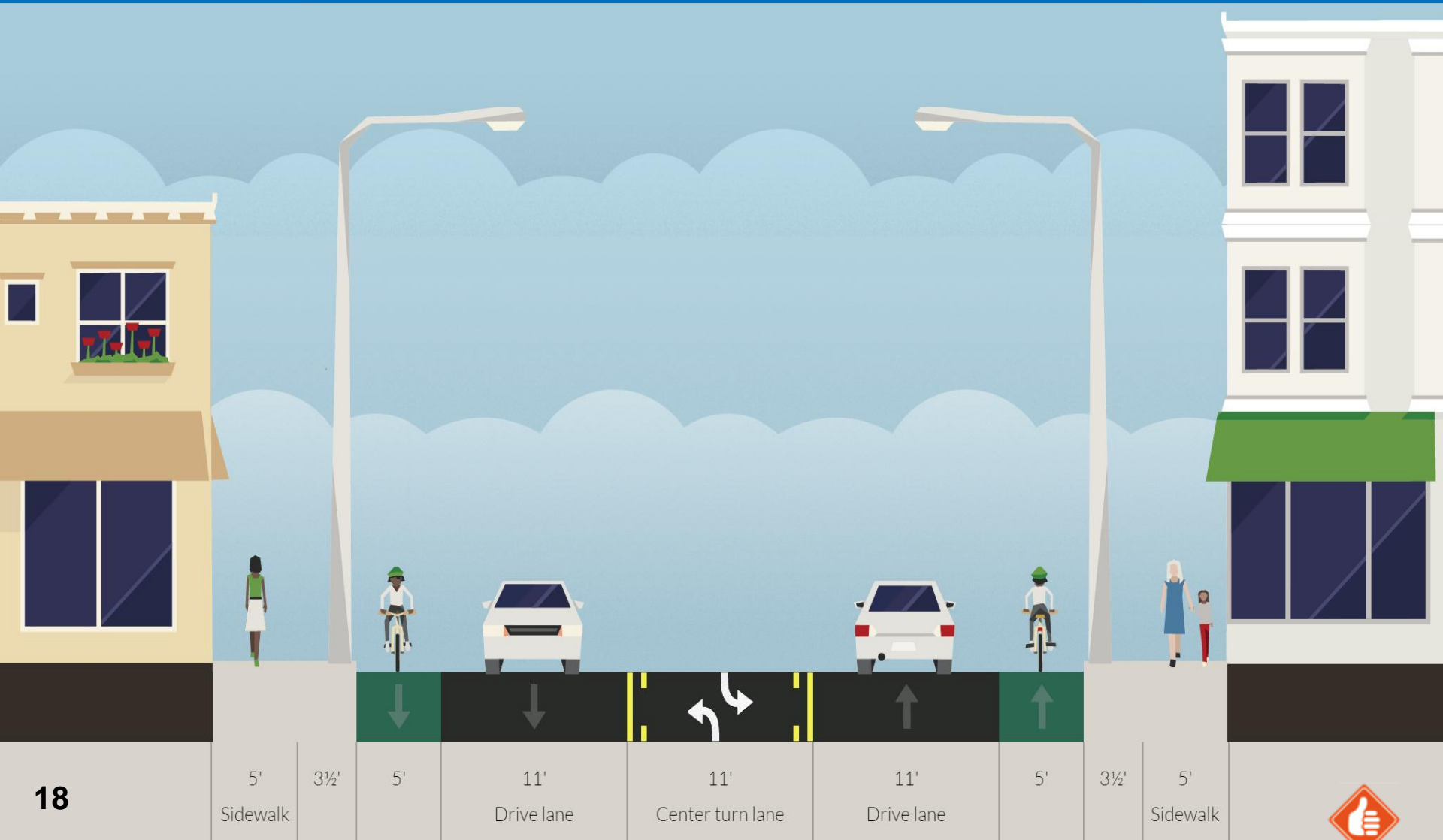


Sidewalks and improved accessibility



# Option 1. On Street Bicycle Lanes

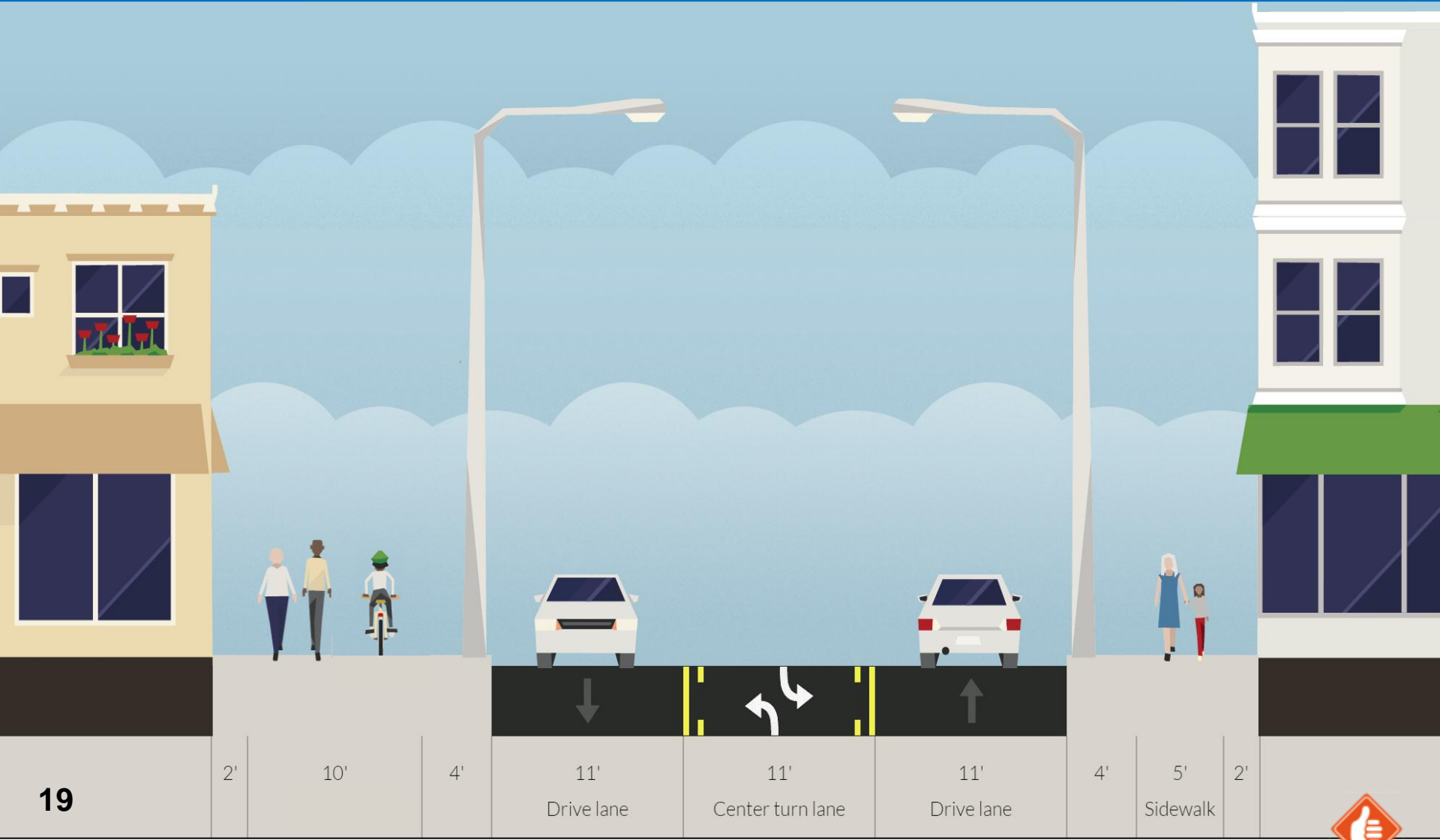
## Weslayan to Buffalo Speedway



*Bike lanes will be striped - green color shown for contrast purposes only.*



# Option 2. Off Street Shared Use Path Weslayan to Buffalo Speedway



19

2'

10'

4'

11'

Drive lane

11'

Center turn lane

11'

Drive lane

4'

5'

Sidewalk

2'



Bike path on north side of street

|   | <h2 style="text-align: center;">On Street Bicycle Lanes</h2>   | <h2 style="text-align: center;">Off Street Shared Use Path</h2>   |
|---|--|---|
| <h1 style="text-align: center;">PROS</h1> | <ul style="list-style-type: none"> <li>• Less driveway conflict with user and drivers</li> <li>• Dedicated lane to reduce pedestrian interaction</li> </ul>  | <ul style="list-style-type: none"> <li>• Increased safety for general user</li> <li>• Less conflict with right-of-way/less acquisition needed</li> <li>• Preserve more trees</li> <li>• Possible to implement consistently for entire corridor</li> </ul> |
| <h1 style="text-align: center;">CONS</h1> | <ul style="list-style-type: none"> <li>• Possible land acquisition needed</li> <li>• Removal of tree in right-of-way or pedestrian realm</li> <li>• Not possible to implement for entire corridor</li> </ul> | <ul style="list-style-type: none"> <li>• Driveway/access conflict</li> <li>• Illegal parking on shared path</li> </ul>  |



# Next Steps

## WESLAYAN TO BUFFALO SPEEDWAY



*Timeline subject to change*

## ALL FOUR SEGMENTS

Provide your input **BEFORE AUGUST 30th**

# Please fill out a comment card!

## Things to consider:

- **Would you prefer on-street bike lanes or off-street bike path?**
- **Have we addressed pedestrian crossing needs?**

**COMMENT CARD**

Date \_\_\_\_\_

Please fill in all information:

Name \_\_\_\_\_

Address \_\_\_\_\_

Email \_\_\_\_\_

Do you have a question or concern? Let us know.

\_\_\_\_\_

\_\_\_\_\_

\_\_\_\_\_

What is the best way to contact you?  Mail  Email

Or email us your comments at: [pweplanning@houstontx.gov](mailto:pweplanning@houstontx.gov)

[www.RebuildHouston.org](http://www.RebuildHouston.org)





# Contact Information



## **SEGMENTS 1 AND 3**

*[www.ReBuildHouston.org](http://www.ReBuildHouston.org)*

*(832) 395-2500*

*[pweplanning@houstontx.gov](mailto:pweplanning@houstontx.gov)*

## **SEGMENT 2**



*Travis Younkin, Deputy Director*

*(713) 524-8000*

*[travis@upperkirby.org](mailto:travis@upperkirby.org)*

## **SEGMENT 4**



*Marlon Marshall, Project Manager*

*(713) 526-7577*

*[marlonm@houstonmidtown.com](mailto:marlonm@houstonmidtown.com)*