

thumbs up  for progress

REBUILD HOUSTON
better streets. better drainage. better future.

Presentation Roadmap

1. What is ReBuild Houston?
2. Overview of the two segments
3. History of Public Engagement
4. South Segment (Planning)
5. North Segment (Funded Project in CIP)
6. Next Steps
7. Contact information



What is ReBuild Houston?

Approved by voters in 2010

Pay-as-you-go approach = No new debt!

Greatest need areas first



ReBuild Houston Goals

Reduce impact of flooding

Improve mobility

Quality of life



ANTOINE RECONSTRUCTION



REBUILD HOUSTON

October 20, 2015



A high-angle photograph of a park or public square. A person in a dark jacket and light pants is walking away from the camera on a dirt path. To the right, there is a paved walkway with several wooden benches and a black lamppost. The area is landscaped with green grass and young trees. In the background, there are more trees and a building with a red sign.

USER EXPERIENCE

DESIGN



History of Public Engagement

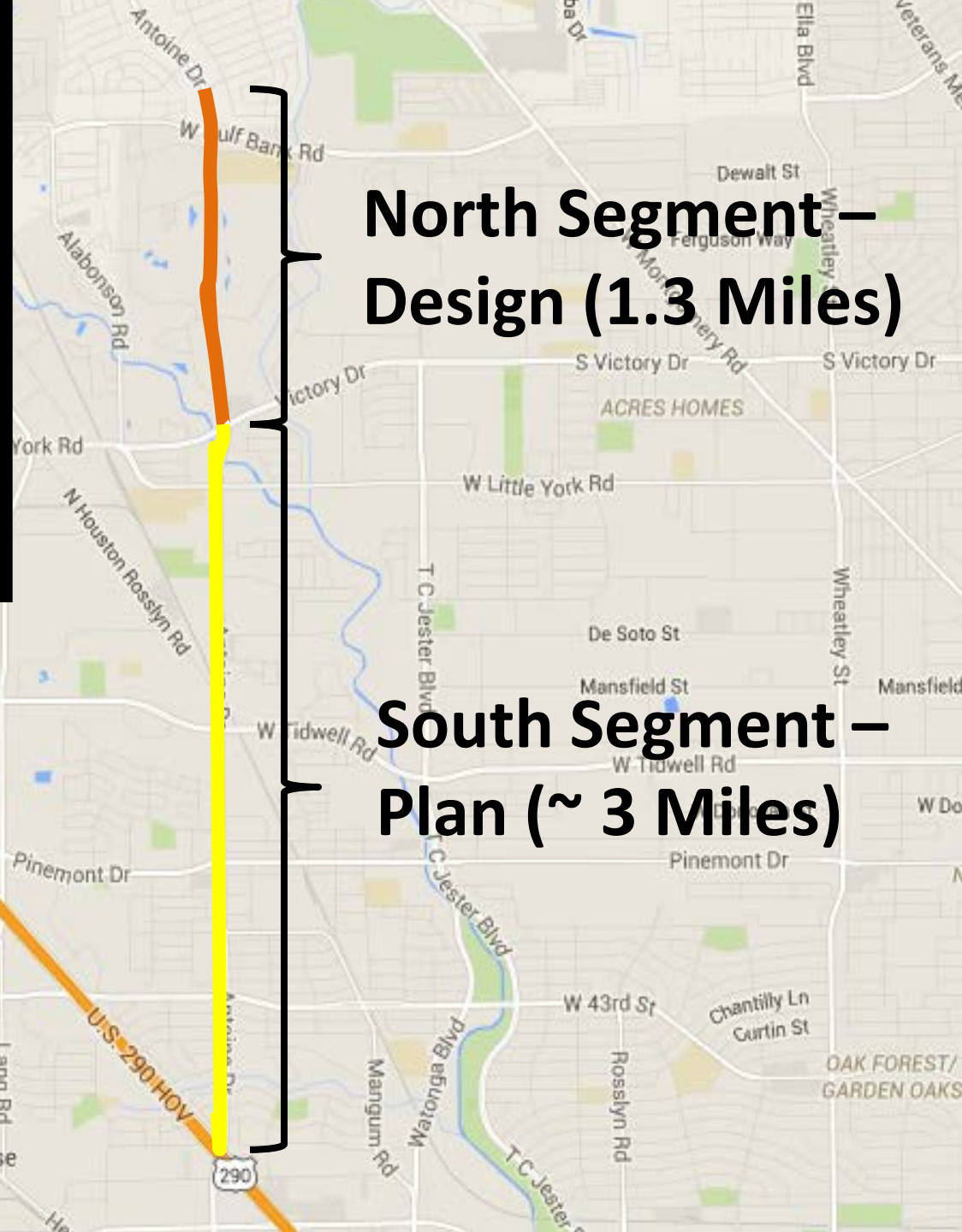
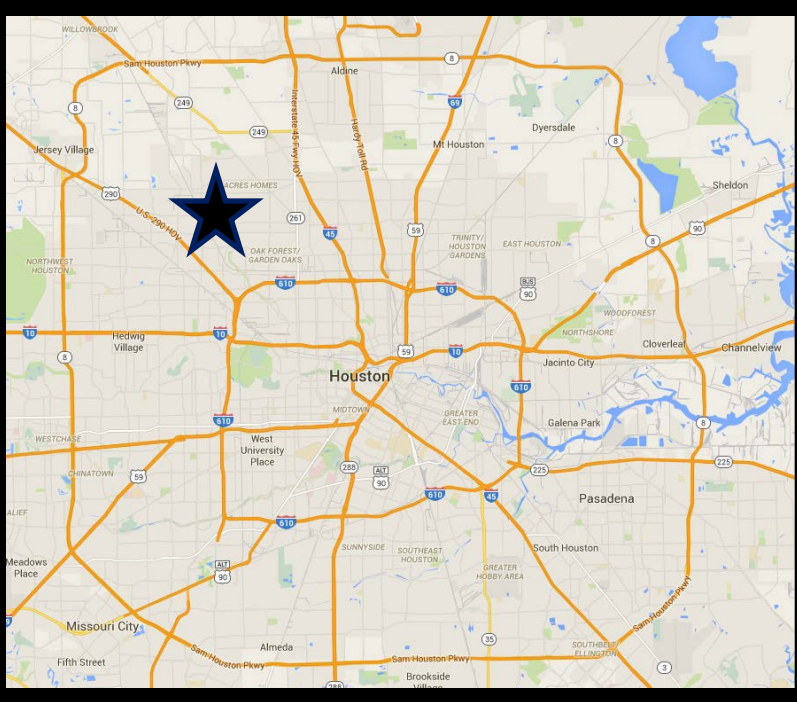


NEAR NORTHWEST MANAGEMENT DISTRICT | LIVABLE CENTERS PLAN



PHOTO PROVIDED COURTESY CITY OF HOUSTON





**North Segment –
Design (1.3 Miles)**

**South Segment –
Plan (~ 3 Miles)**

Planning vs. Funded CIP Project

South Segment – In Planning

Northwest Fwy (US 290) to Victory Drive



North Segment – In Design

Victory Drive to Bridge Forest Drive



Antoine Corridor – Current Conditions



Antoine Corridor – Priorities



Increase mobility, accommodate growth



Pedestrian Safety and Accessibility



Improve storm, water and sewer systems



Bicycle safety and accessibility



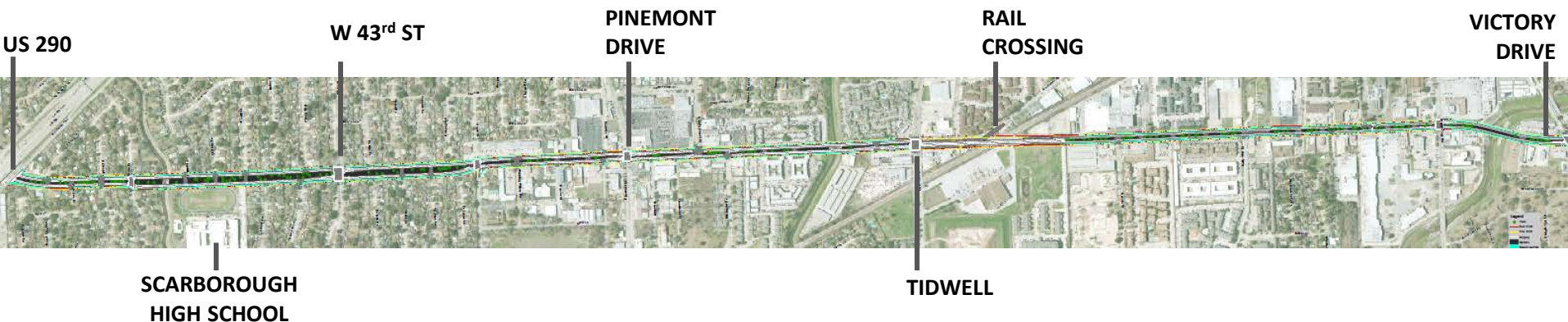
Antoine South Segment

Northwest Fwy (US 290) to Victory Drive

Need Area Number N-2013T-0013S

In Planning – Not funded

Not scheduled



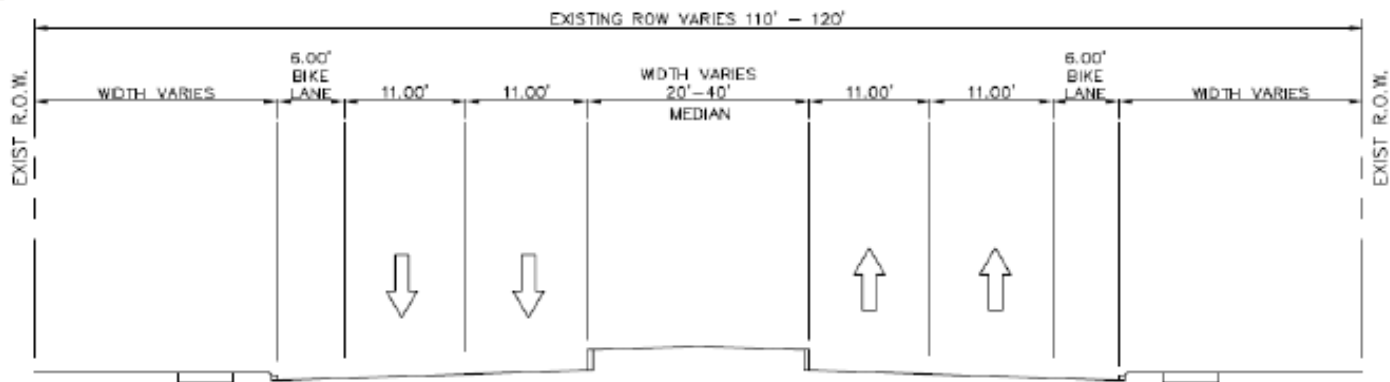
Expand from four to six lanes
(120' ROW)

Reconstruct back to four lanes
(100' ROW)

South Segment

Example Potential Cross Section Change




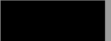


Antoine from US290 to Saxon

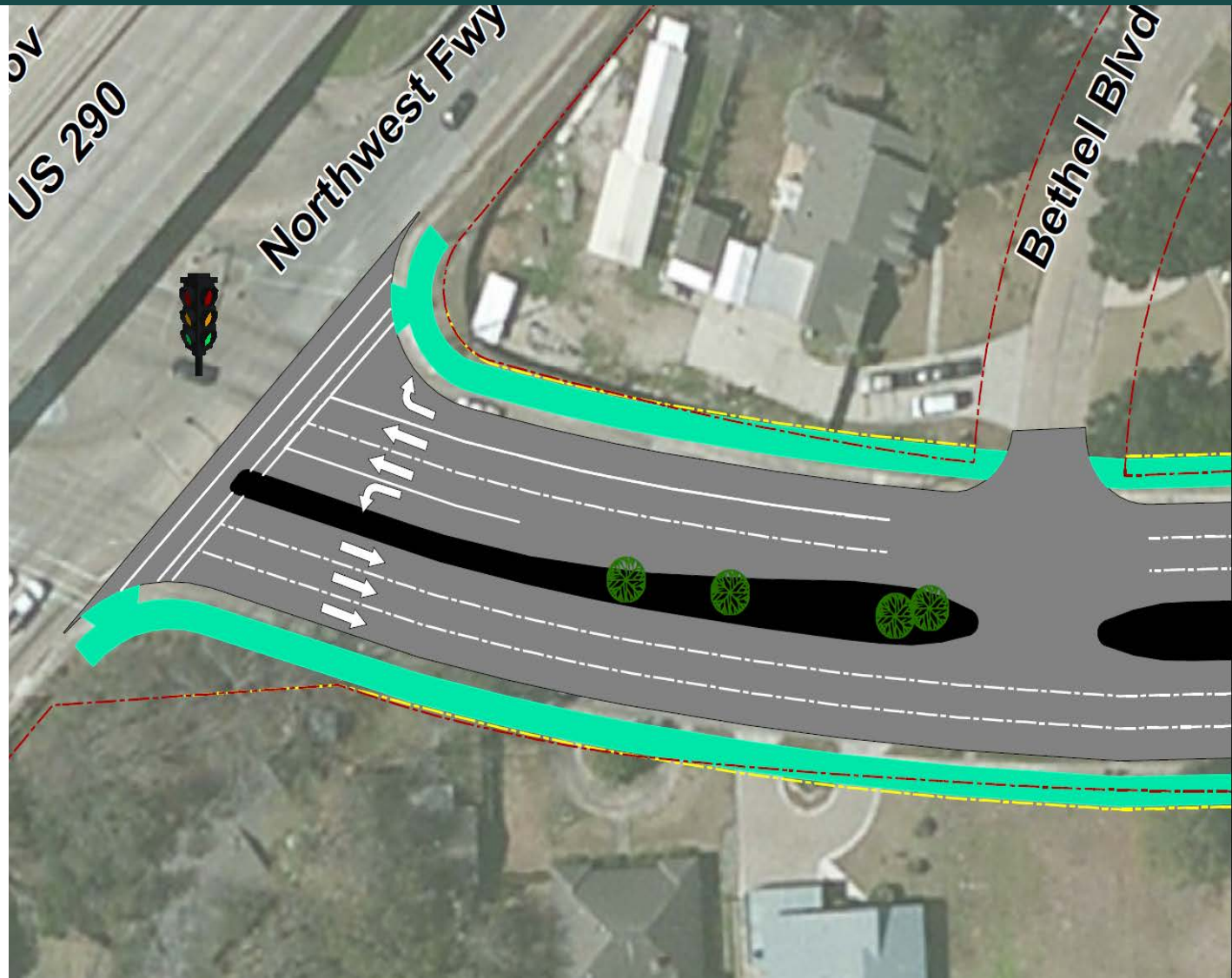


EXISTING SECTION
FROM US290 TO SAXON

South Segment – US 290 Intersection

Legend

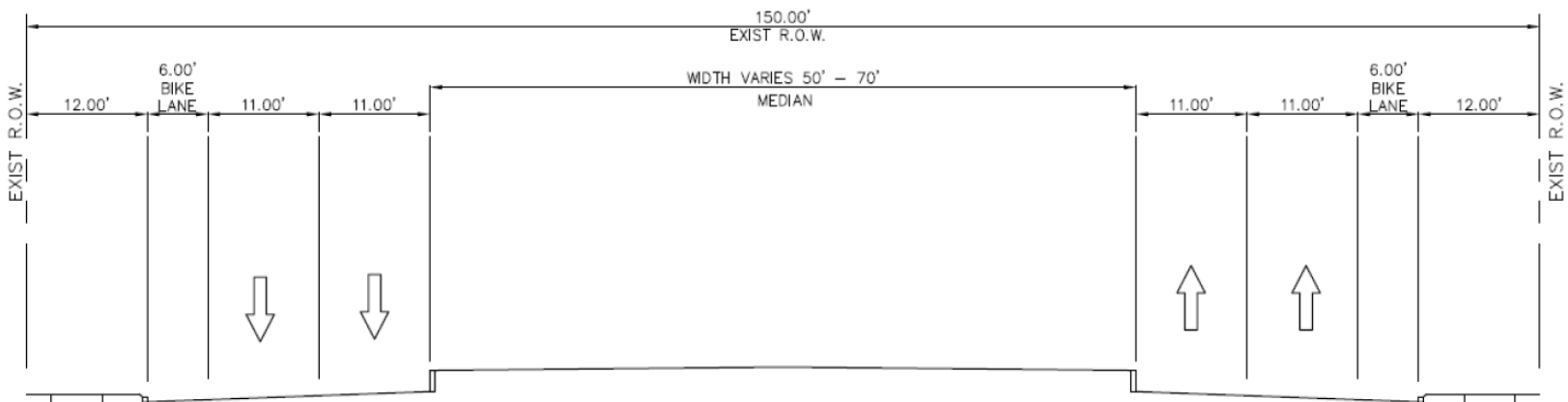
-  Trees
-  Existing ROW
-  Proposed ROW
-  Medians
-  Sidewalk
-  Pavement



South Segment

Example Potential Cross Section Change

Antoine from Saxon to Acorn

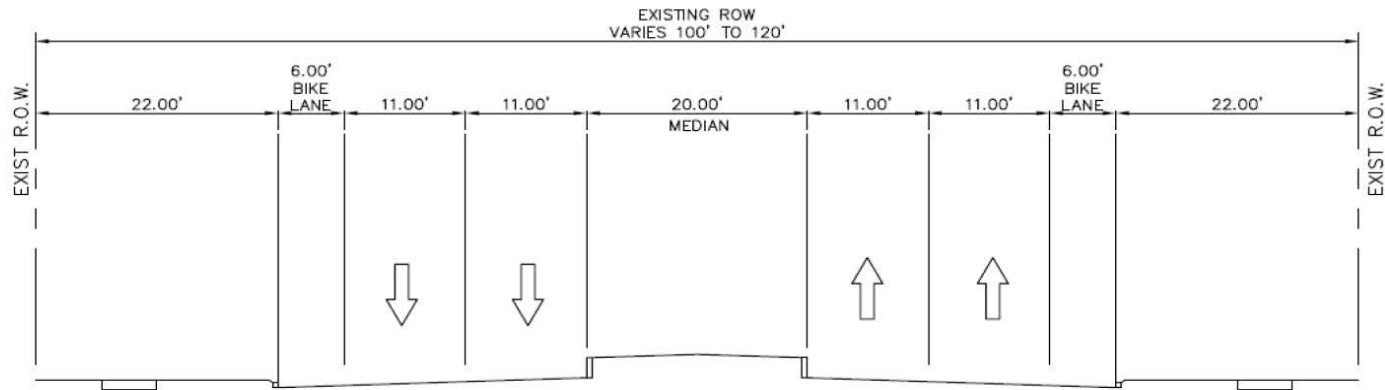


EXISTING SECTION
FROM SAXON TO ACORN

South Segment

Example Potential Cross Section Change

Antoine from Acron to Tidwell



EXISTING SECTION
FROM ACORN TO TIDWELL

South Segment – Tidwell Intersection

Legend



Trees

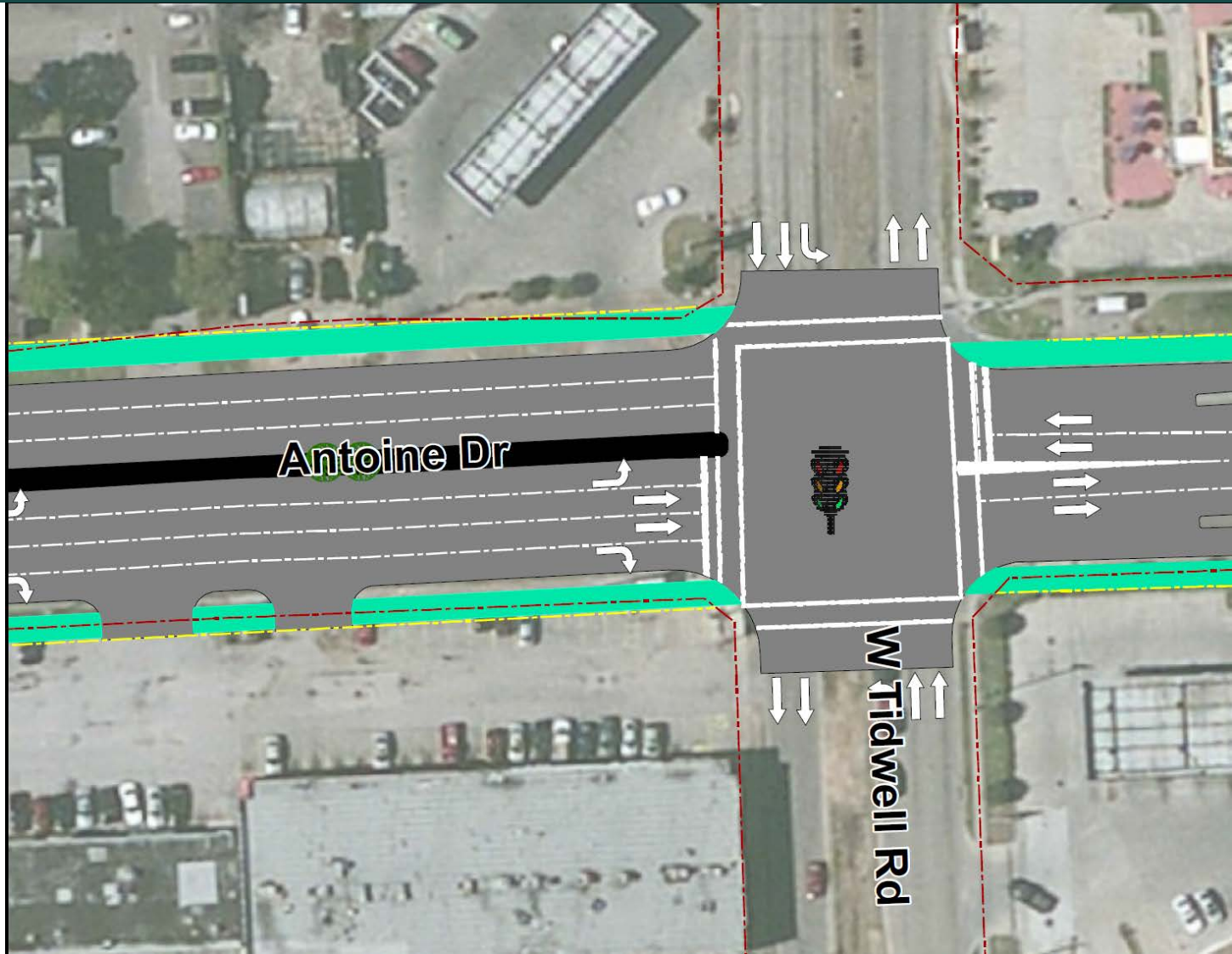
Existing ROW

Proposed ROW

Medians

Sidewalk

Pavement



South Segment – Example Rail Crossings



Antoine South Segment - Proposed



Widen existing road from 4 to 6 lanes between Tidwell and US 290



Improve Pedestrian Realm



Improved signals and turn lanes at intersections



Add off street bike paths

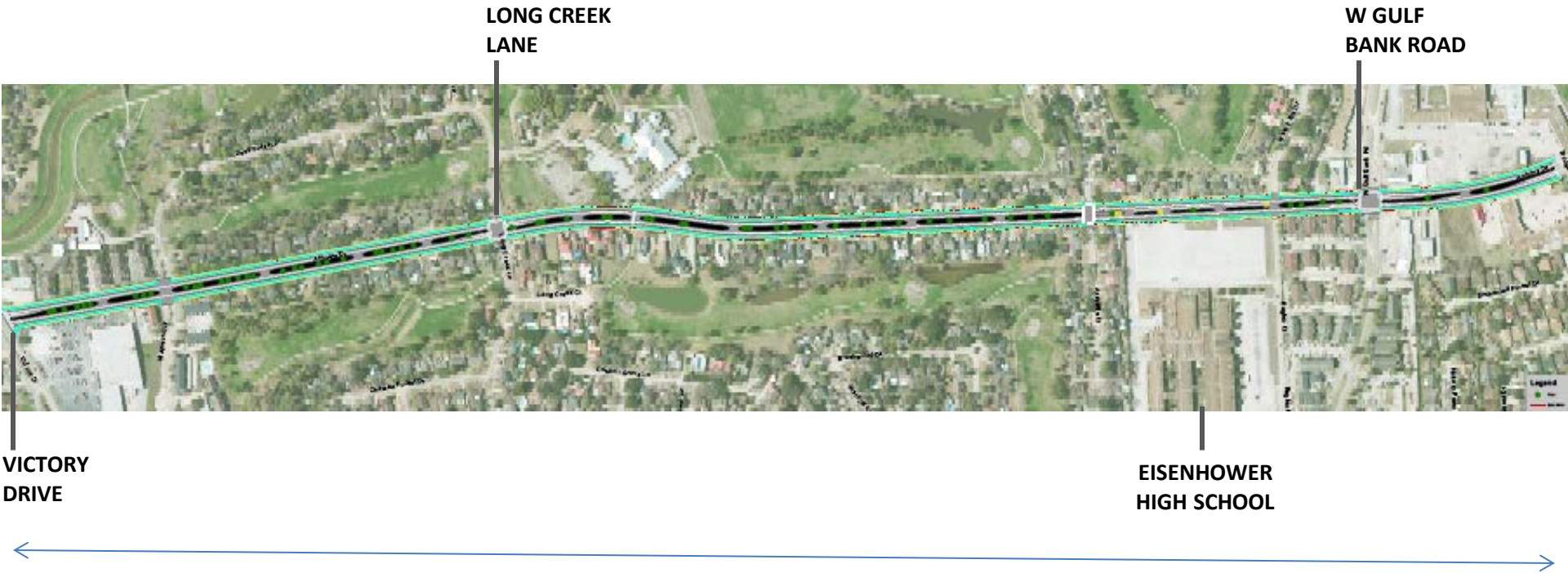


Replace storm, water and sewer systems as necessary



Antoine North Segment Victory Drive to Bridge Forest Drive

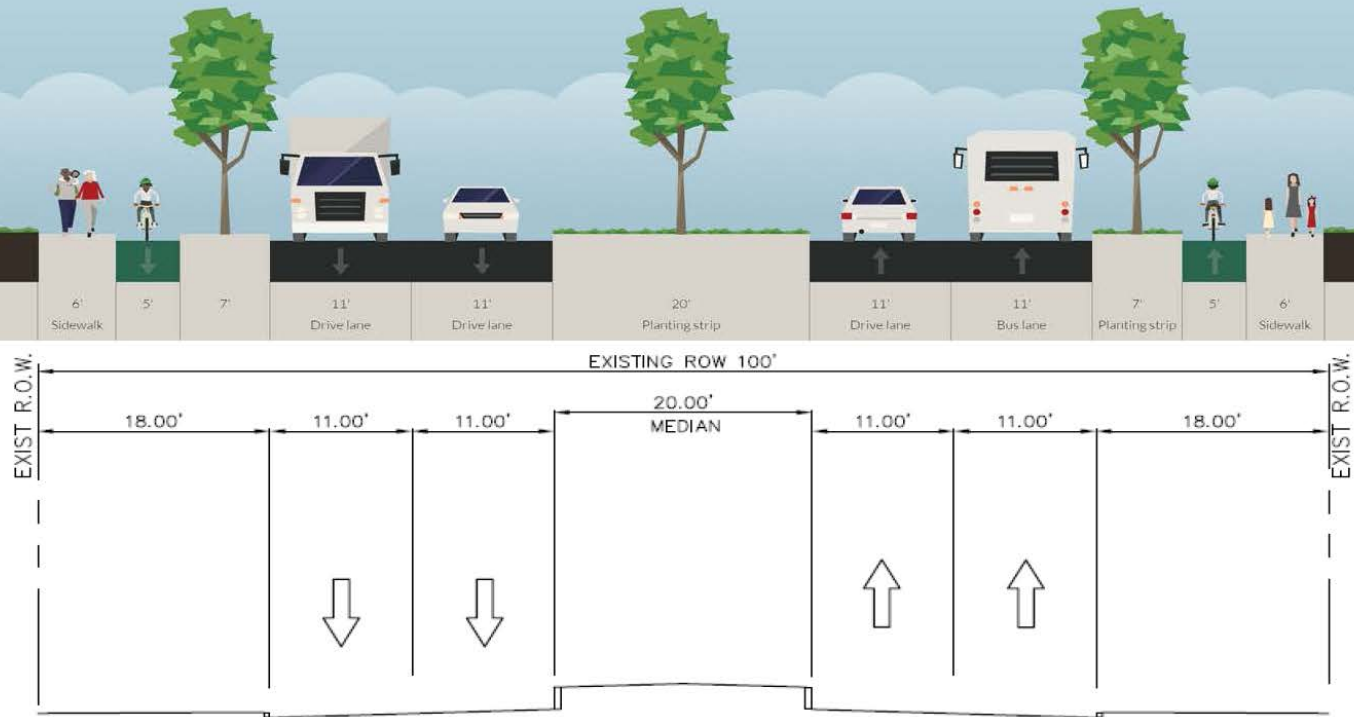
*CIP Project Number N-100030
In Design – Funded Project
Construction est. 2020*



Reconstruct back to four lanes
(within existing 100' ROW)

North Segment - Cross Section




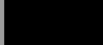
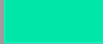

Antoine, Victory to BridgeForest (CIP Project)

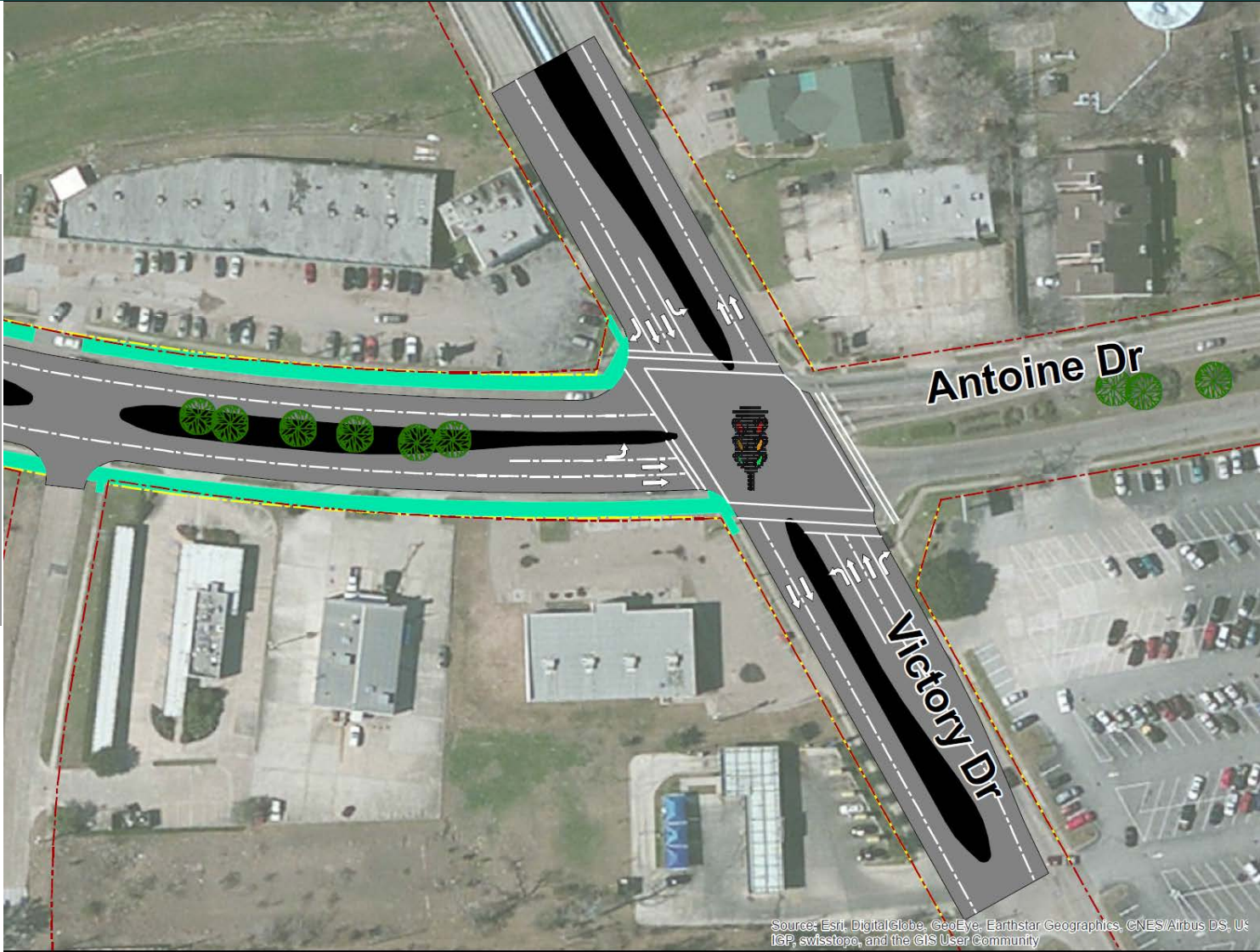


EXISTING SECTION
FROM VICTORY TO BRIDGEFOREST

North Segment – Victory Intersection

Legend

-  Trees
-  Existing ROW
-  Proposed ROW
-  Medians
-  Sidewalk
-  Pavement



Source: Esri, DigitalGlobe, GeoEye, Earthstar Geographics, CNES/Airbus DS, US IGP, swisstopo, and the GIS User Community

Antoine North Segment



Reconstructing existing 4 lanes



Improve Pedestrian Realm



Update traffic signals



Add off street bike paths



Replace storm, water and sewer systems as necessary



Next Steps

North Segment

2014
Planning

2017
Design

2020
Construction

2022
Anticipated
Completion

Timeline subject to change

South Segment

2013-15
Planning

TBD
Funding and Design

TBD
Construction

Timeline subject to change

BOTH SEGMENTS

Provide your input **BEFORE NOVEMBER 30th**

Please fill out a comment card!

COMMENT CARD

Date _____

Please fill in all information:



Name _____

Address _____

Email _____

Do you have a question or concern? Let us know.

What is the best way to contact you? Mail Email

Or email us your comments at: pweplanning@houstontx.gov

www.RebuildHouston.org

