



Arlington Heights Area Reconstruction Meeting

Amanda Marshall, *P.E.*



AGENDA

1 OVERVIEW OF THE PROJECT

2 NEXT STEPS

3 CONTACT INFORMATION



Arlington Heights Area Reconstruction

Examples of Current Conditions



Pavement/Drainage

Arlington Heights Area Reconstruction

Identified Improvement Needs



Improve storm drainage



Improve pavement conditions and mobility



Improve water and wastewater as needed

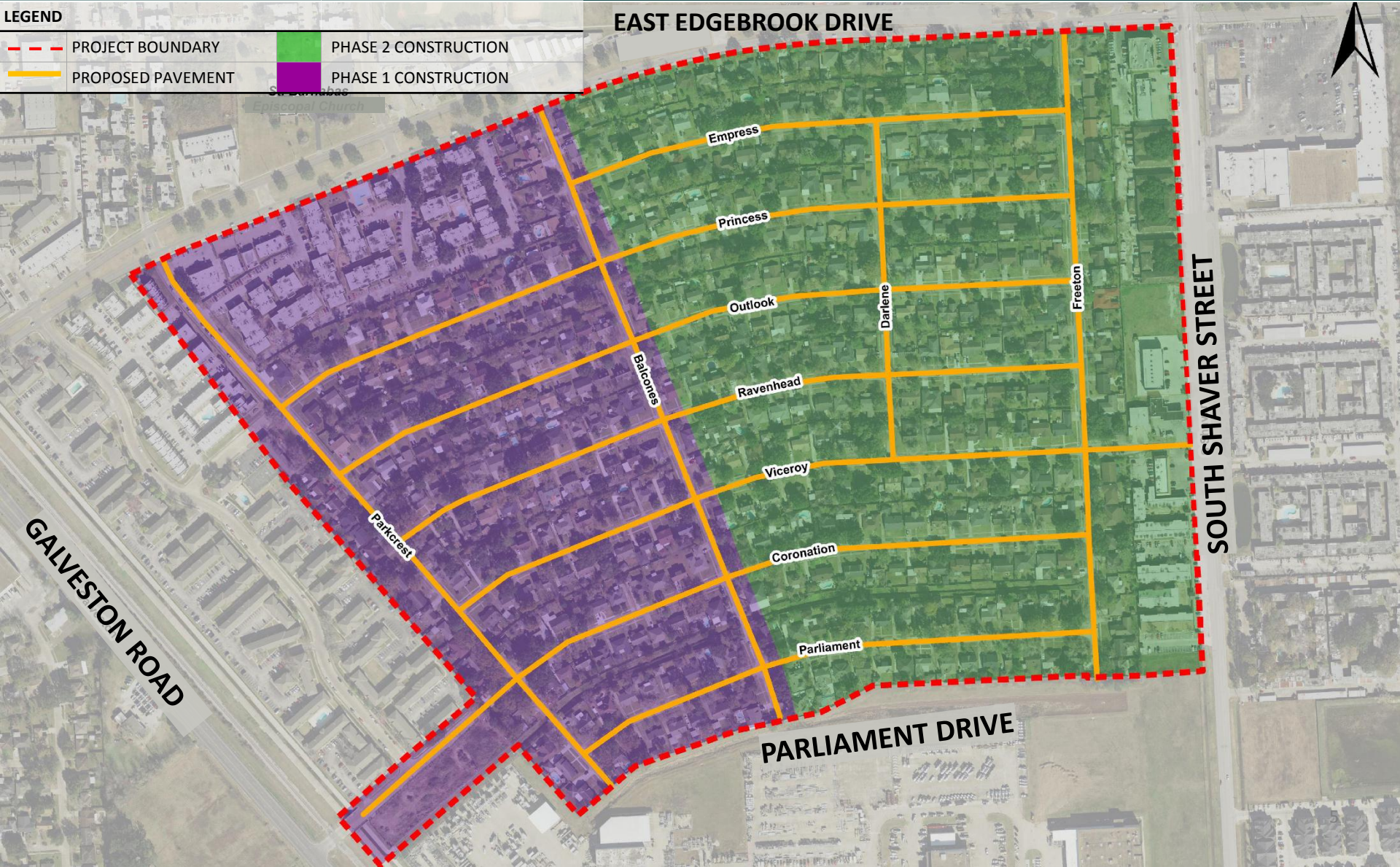


Pedestrian safety and accessibility



Arlington Heights Area Reconstruction

M-410006 Project Area : E. Edgebrook Drive to the north, S. Shaver Street to the east, Parliament Drive to the south, and Galveston Road to the west



Arlington Heights Area Reconstruction

Proposed Cross Section



5' sidewalks

27' Roadway

Arlington Heights Area Reconstruction



Improve storm drainage



Improve water and wastewater as needed



Improve pavement conditions and mobility



Sidewalks and ramps to meet ADA Standards



Arlington Heights Area Reconstruction

Phase I & Phase II

Phase I



Phase II



ReBuild Houston Goals

The background of the slide is a photograph of a city at dusk. In the foreground, a multi-lane highway curves through the frame, with a few cars visible. The middle ground is filled with lush green trees. In the background, a city skyline is visible under a sky with soft, colorful clouds in shades of blue, purple, and orange. The overall mood is serene and hopeful.

Reduce impact of flooding

Improve mobility

Quality of life

City of Houston - Public Works and Engineering

Public Works and Engineering CIP Project Portal – DRAFT

City of Houston - Public Works and Engineering

South Houston High School

Elementary School

Enter Project No. or Descri

Walgreens

Sellers Bros

Family Dollar

Drainage: M-410006-0002

CIP No.	M-410006-0002
Description	Arlington Heights Area Drainage Improvements Sub Project 2
Status	Future Construction
Cost	\$10,187,020
Document	More info
Construction Start	3rd Qtr FY18
Construction End	
Completed Date	
Council Dist.	E

Zoom to

City of Houston, Esri, HERE, DeLorme, INCREMENT P, NGA, USGS

POWERED BY esri



We Want Your Input

Fill out a comment card tonight

Or email us your comments at:
pweplanning@houstontx.gov
www.RebuildHouston.org

YOUR INPUT BY
July 25, 2016
WILL HELP US STAY ON SCHEDULE





THANK YOU

Please find your nearest breakout group and leave your comment cards at the sign-in table.

