



Binglewood Area Drainage and Paving Improvements (WBS No. M-000293-0001-4) **Preconstruction Community Meeting**

Kevin Hammond, P.E.
(City of Houston – Capital Projects)

December 9, 2017

AGENDA

1

OVERVIEW OF THE PROJECT

2

PROJECT SCOPE AND PHASING

3

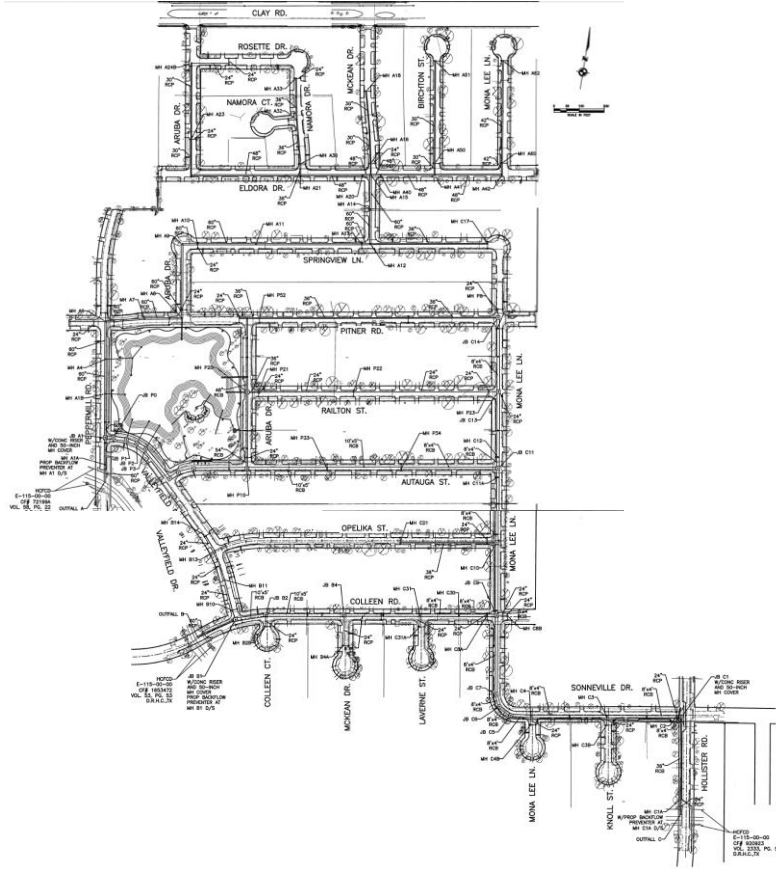
WHAT TO EXPECT DURING CONSTRUCTION

4

CONTACT INFORMATION



Binglewood Area Drainage and Paving (WBS No. M-000293-0001-4)



2017/2018

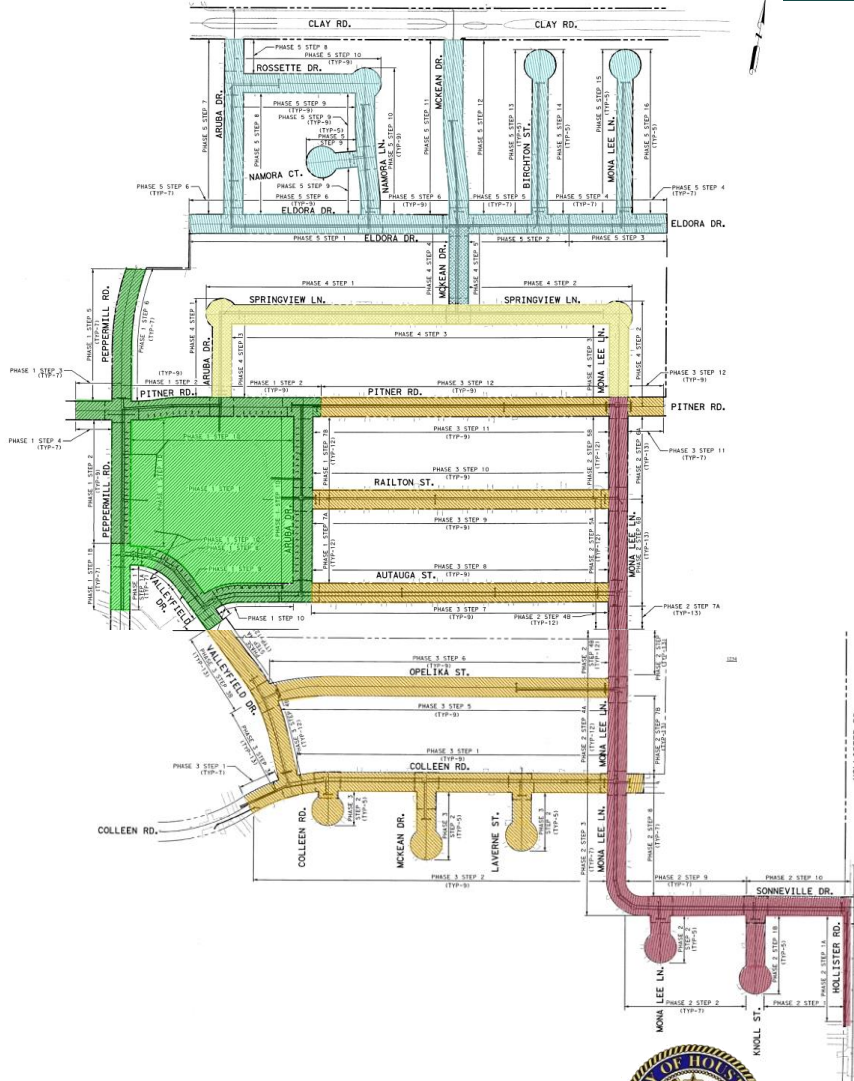
Winter
Construction Begins

2019






Fall
Anticipated Completion



Binglewood Area Drainage and Paving (WBS No. M-000293-0001-4) Construction Phasing Exhibit



LEGEND:

-  PHASE 1 - Winter 2018 to Summer 2018
-  PHASE 2 - Summer 2018 to Winter 2019
-  PHASE 3 - Winter 2019 to Spring 2019
-  PHASE 4 - Spring 2019 to Summer 2019
-  PHASE 5 - Summer 2019 to Fall 2019

NOTE:
EXPECTED DATES ARE
PRELIMINARY ESTIMATES,
MAY CHANGE DURING
CONSTRUCTION.



Binglewood Area Drainage and Paving

(WBS No. M-000293-0001-4)

Identified Improvement Needs



Storm drainage



Roadway section



Water



Park Improvements, shared space for Stormwater Detention

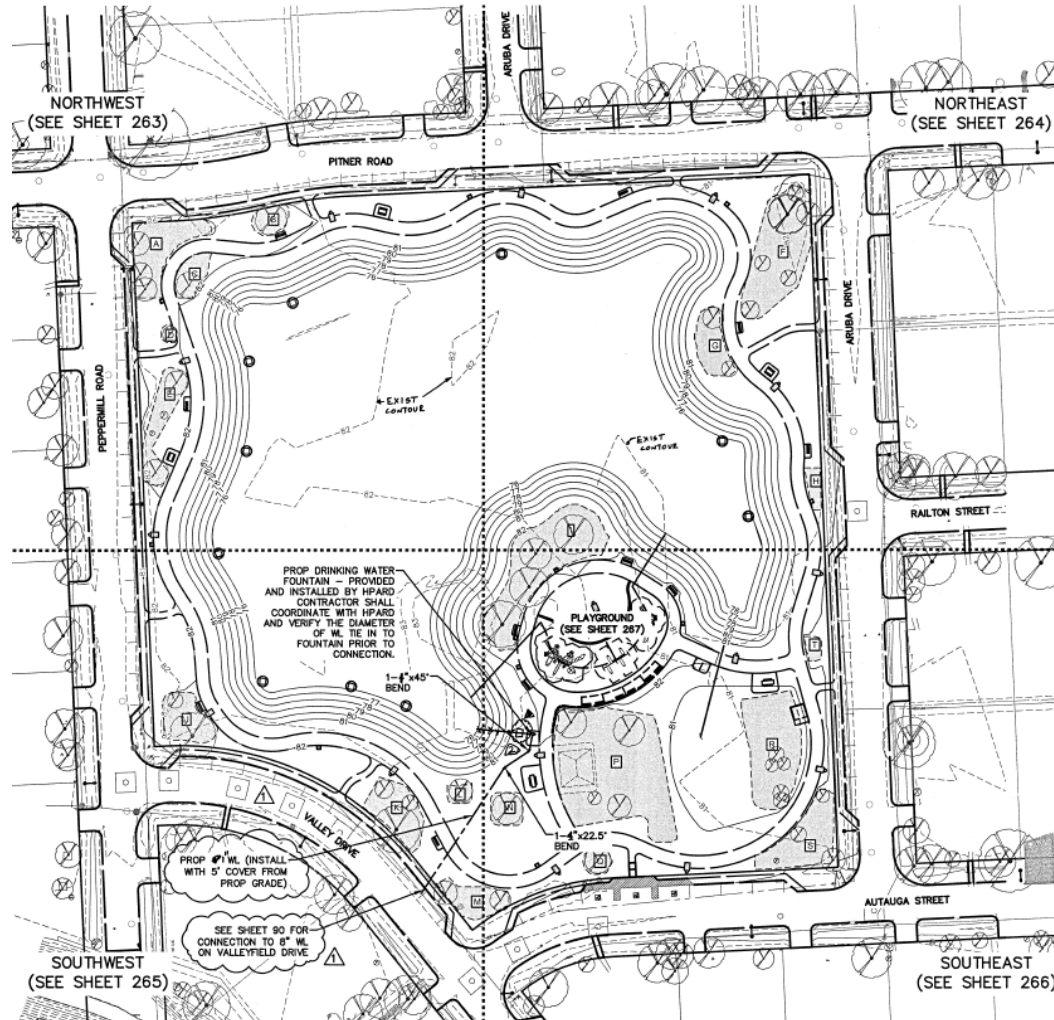


Binglewood Area Drainage and Paving (WBS No. M-000293-0001-4) Identified Improvement Needs



James W. Lee Park - Reconstruction

- Playground, covered seating structure, bike rack, paved walking trail, security lighting, picnic tables and benches, trees and turf.



Construction – Project Info



1. *Keep your door hanger throughout the project*

- Lists phone numbers you need
- Lists the Project Number
 - Number needed when you call or write us

2. *Meet the City PM or Inspector*

- Will be your contact to resolve issues throughout construction

3. *Construction will occur within the City right-of-way*

- City right-of-way generally extends 8 to 16.5 feet into your yard (past proposed face of curb, lesser at some cul-de-sacs)

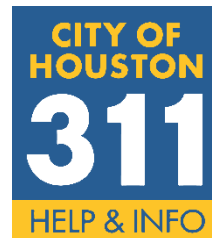


Construction – How to Report a Problem



Contact 311

- Report the project number
- Request issue be directed to Public Works Capital Projects
- Be as complete as possible with your concern



Contact us at: pwecip@houstontx.gov



What to Expect During Construction



Prepare for Construction

- Document the conditions of your yard and sprinkler head locations; the contractor will do the same.
- Remove special landscaping features (i.e., fountains, lawn art)
- Find alternative parking
- Plan for water service interruption
- Be mindful of protective barriers
- James W. Lee Park reconstruction (initial phase)

Potential Service Impacts:

- Potential water service impacts
- Potential parking/driveway access impacts
- Trash/recycling receptacle location impacts
- Limited number of tree removals/replacement per plan
- Potential for school bus re-routes





What to Expect During Construction

Water Services

- Potential for service interruption:
 - Waterline replacement - notification 24 to 48 hours in advance
 - Periodic
 - May last 2 to 4 hours
- Accidental/Unplanned Interruption – the contractor will work quickly to restore services.





What to Expect During Construction

Parking and Driveway Access

- Short-periods of limited access to your driveway
- Park elsewhere and walk to your home
- Contact us immediately if need handicapped access
- Short-periods of no on-street parking
- Construction will alternate each side of the street, in steps
- Suggest working with neighbors on the opposite side – they may need your help when it's their turn





What to Expect During Construction

Driveways

- Driveway aprons will be reconstructed
- If construction required beyond the apron, City will request a right-of-entry from property owner





What to Expect During Construction

Trash/Recycling Pick-up

- Potential for service interruption:
 - Construction will alternate each side of the street, per steps of each phase
 - Waste receptacles should be placed on the non-affected side of the street





What to Expect During Construction

Trees

- Our goal is to protect all trees during construction.
 - We accomplish this by working with the City Arborist
 - Unhealthy trees will be removed.
- Some trees may be removed as part of the project
 - New trees may be planted elsewhere in the project area, per plan.





What to Expect During Construction

School Buses

- The City of Houston and the Contractor work with all schools to minimize impacts to students, school bus schedules, and school bus stops
- School buses may need to use different streets temporarily





What to Expect During Construction

RESTORATION

- Restoration of sprinkler systems, grass, etc. will be done when construction is complete.
- City does not approve final payment to contractor until restoration is complete.
- If you have concerns:
 - Document (writing, photo, etc.)
 - Call 3-1-1
 - Do not make the repairs yourself



Binglewood Area Drainage and Paving (WBS No. M-000293-0001-4) Contact Information

Triple B Services, Inc. (Contractor)

Fred Mitri, Project Manager
Jackie Murphy, Field Project Manager

o: (281) 324-3264 ext.128
c: (832) 465-0273

City of Houston – Contract Staff (oversight)

Ben Barajas, Sr. Construction Inspector (COH)

o: (832) 395-5842

TBD, Construction Manager
TBD, Inspector
(Entech Civil Engineers, Inc.; CM&I Contract Team)

o: (281) 945-0069

Kevin Hammond, Project Manager (COH)

o: (832) 395-2275
c: (832) 627-3450

Contact us at pwecipi@houstontx.gov





IMPORTANT LINKS

For a complete listing of Frequently Asked Questions please visit:

- <https://www.publicworks.houstontx.gov/ecd/faqs.html>

Today's presentation and additional project information can be found at:

<https://rebuildhouston.org/community-engagement>





THANK YOU

*Please find a breakout group at the
Houston Public Works tables.*

