

thumbs up  for progress

REBUILD HOUSTON
better streets. better drainage. better future.



Saturday, July 11

2:00-3:30PM

Open House - 2PM

Presentation-2:30PM

Johnson Library

3517 Reed Rd.

Houston, TX 77051

CLOVERLAND AREA RECONSTRUCTION

BOUNDED BY CULLEN BOULEVARD ON THE EAST, NEAR HOWCHER STREET TO THE NORTH, NEAR LEITRIM WAY TO THE WEST, AND NEAR HERITAGE TRAIL DRIVE ON THE SOUTH.

PUBLIC MEETING

The Department of Public Works & Engineering invites you to an open house and presentation about the reconstruction of the Cloverland Area (N-210004).

The project will improve the Cloverland area neighborhood streets and drainage. Reconstruction will include storm drainage, pavement, sidewalks, sewer infrastructure, and street lighting.

For more information visit: www.rebuildhouston.org



What is ReBuild Houston?

- **Approved by voters in 2010**
- **Pay-as-you-go approach (no new debt)**
- **Greatest need areas first (with greatest benefit to communities)**



ReBuild Houston goals

- Reduce flooding
- Improve mobility
- Quality of life



Cloverland Area Reconstruction



REBUILD HOUSTON

July 11, 2015



CLOVERLAND RECONSTRUCTION

(Between Howcher Street to the north and Heritage Trail Drive on the south;
and between Cullen Boulevard on the east and Leitrim Way to the west)



Overview

Phase 1 (North of Tavenor Ln)

- In the Capital Improvement Plan
- Design will start this year; seeking community input
- Construction 2019

Phase 2 (South of Tavenor Ln)

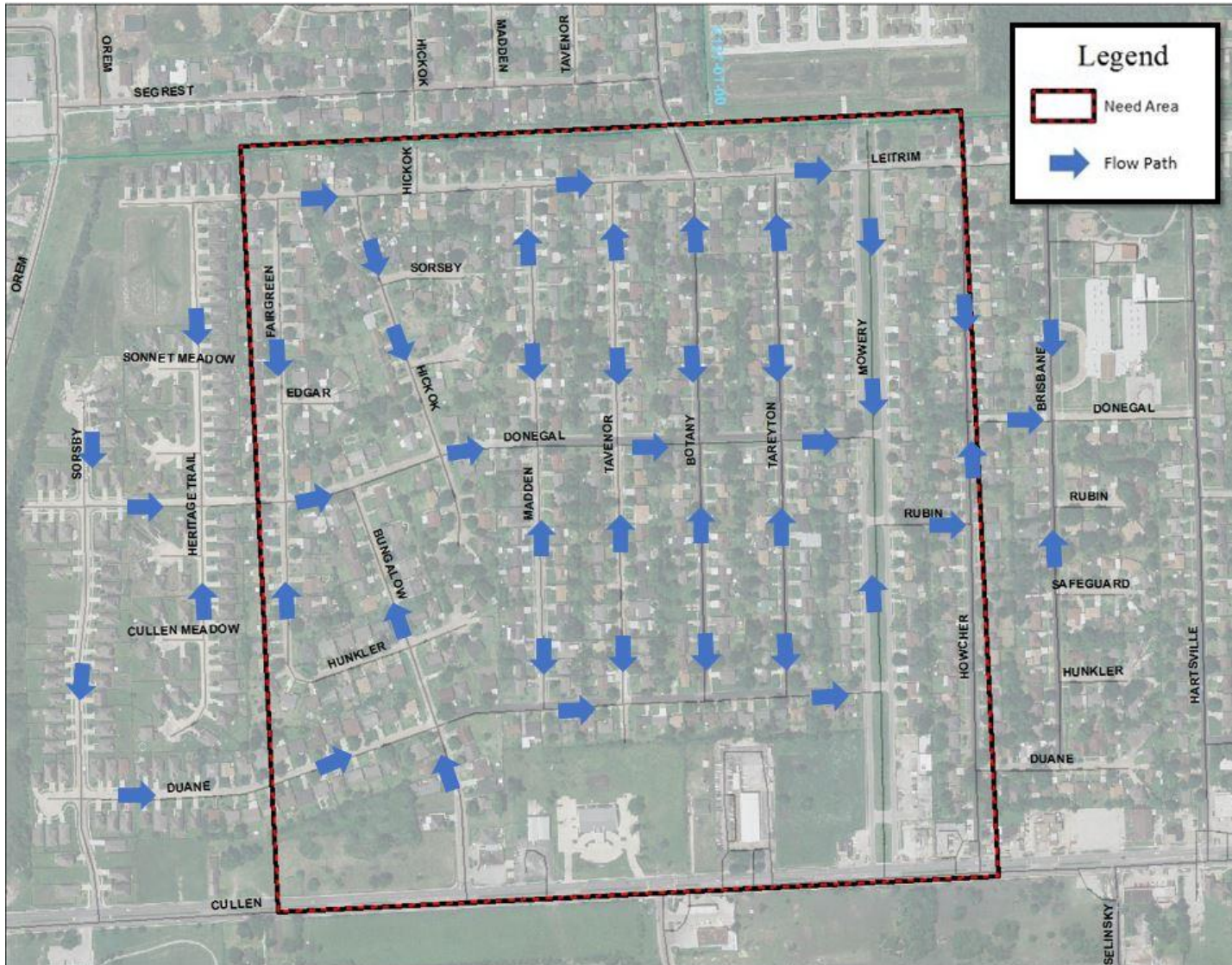
- Candidate project
- Design will start this year; seeking community input
- Construction is planned for 2021



Pavement condition



Storm



Sewer



Sidewalk accessibility



Lights



Project priorities



Improving pavement condition



Improving storm drainage system



Improving pedestrian safety



The Plan



NEW PAVEMENT

- Replace streets
- Improve ride quality



The Plan



PEDESTRIAN REALM

- New and reconstructed sidewalks
- Ramps to meet ADA requirements



The Plan



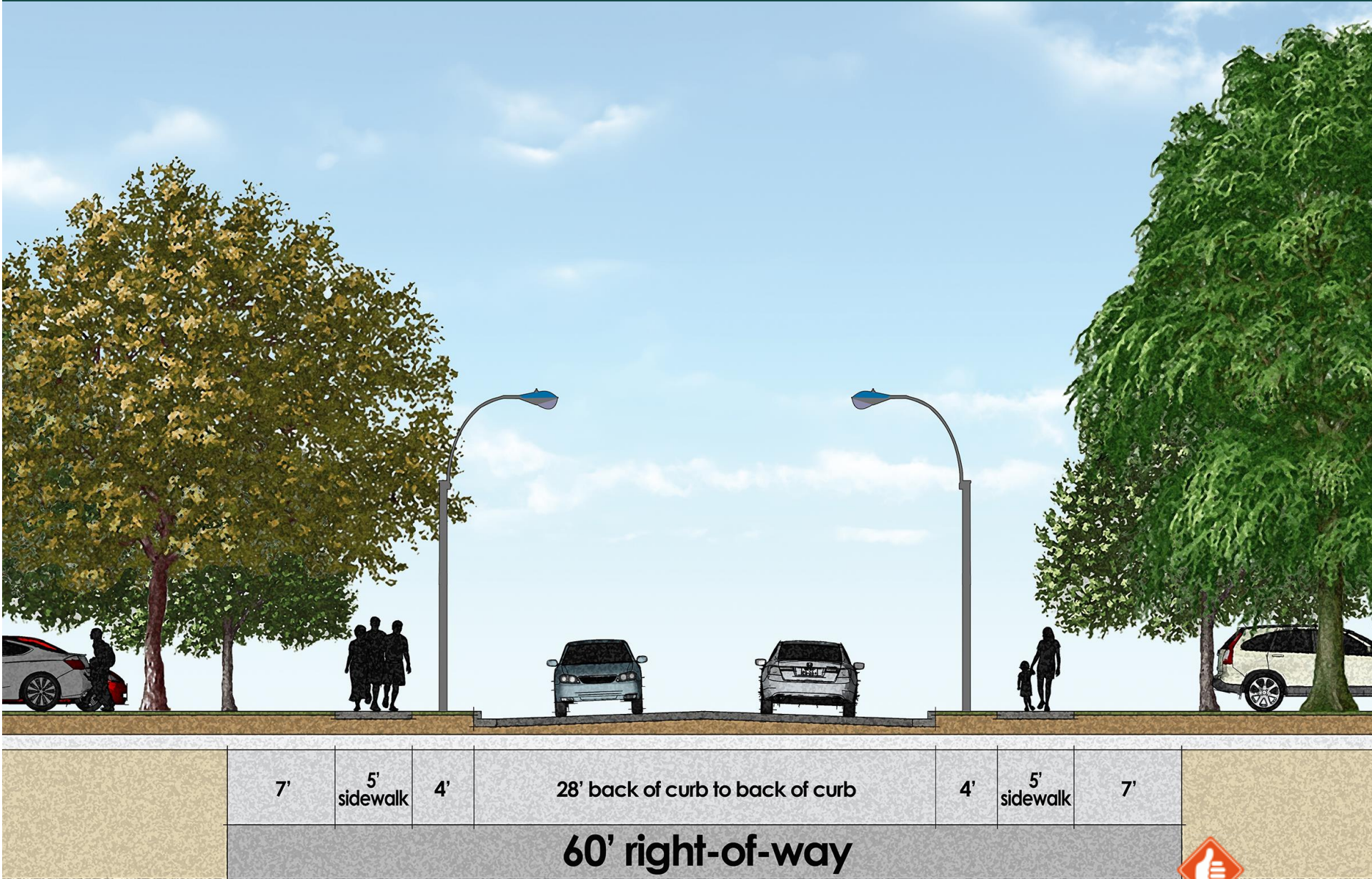
SEWER and STORM

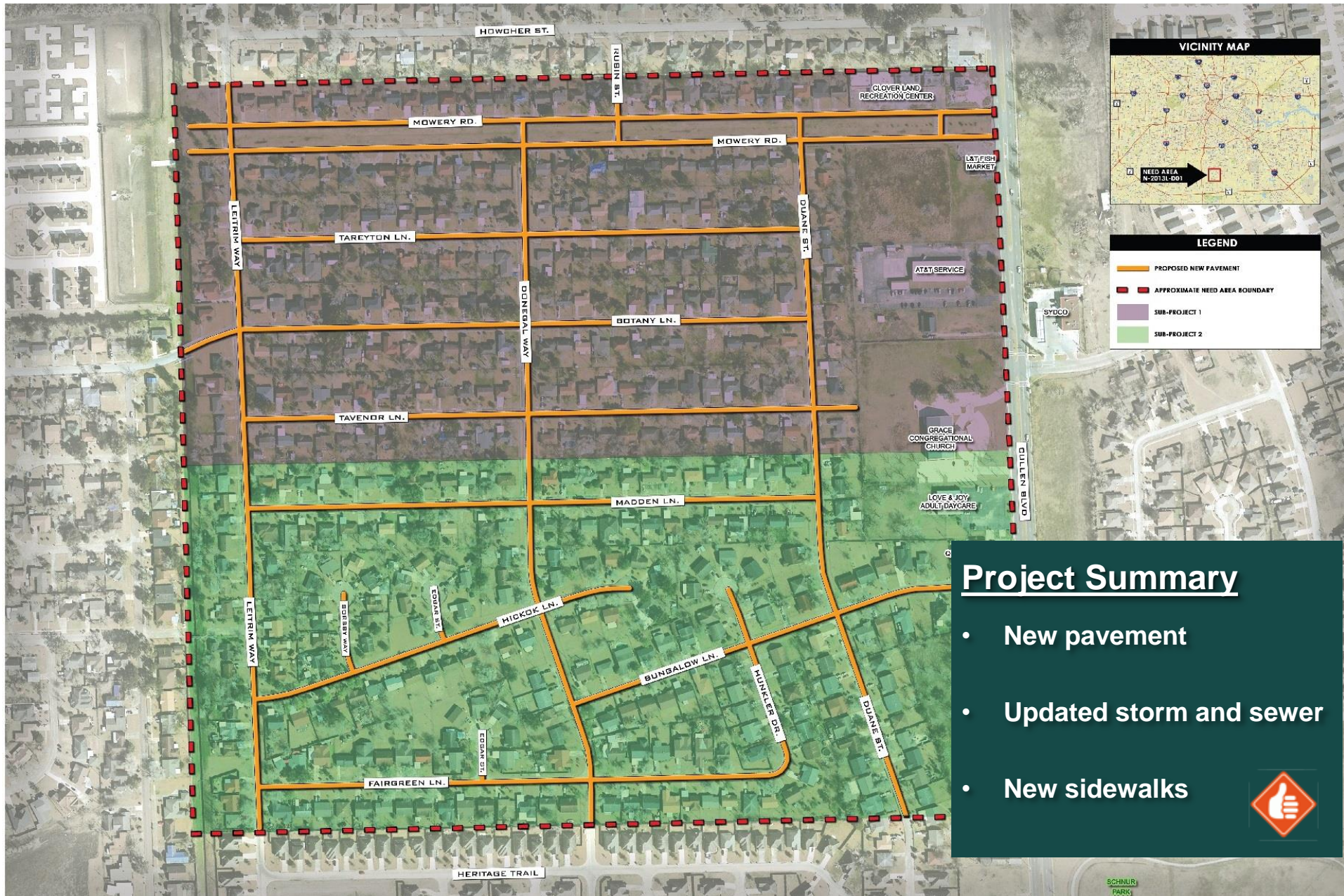
Replace storm drainage system

Replace sewer infrastructure



Typical Cross Section





Project Summary

- New pavement
- Updated storm and sewer
- New sidewalks



SCHULZ PARK

NEXT STEPS

Cloverland – Phase 1 (North of Tavenor)



Timeline subject to change

Cloverland – Phase 2 (North of Tavenor)



Timeline subject to change



We want to hear from you

COMMENT CARD

Date _____

Please fill in all information:

Name _____

Address _____

Email _____

Do you have a question or concern? Let us know.

What is the best way to contact you? Mail Email

Seeking
community
input for the
project





THANK YOU