



CITY OF HOUSTON SURFACE WATER TRANSMISSION PROGRAM

**Proposed 54-Inch Water line on Vickery
Proposed 108-Inch Water line**

Community Meeting

WBS No. S-000900-0127-4

WBS No. S-000900-0156-4

Venus Price, P.E.

June 5, 2018

AGENDA

1

OVERVIEW OF THE PROJECT

2

PROJECT SCOPE AND PHASING

3

WHAT TO EXPECT DURING CONSTRUCTION

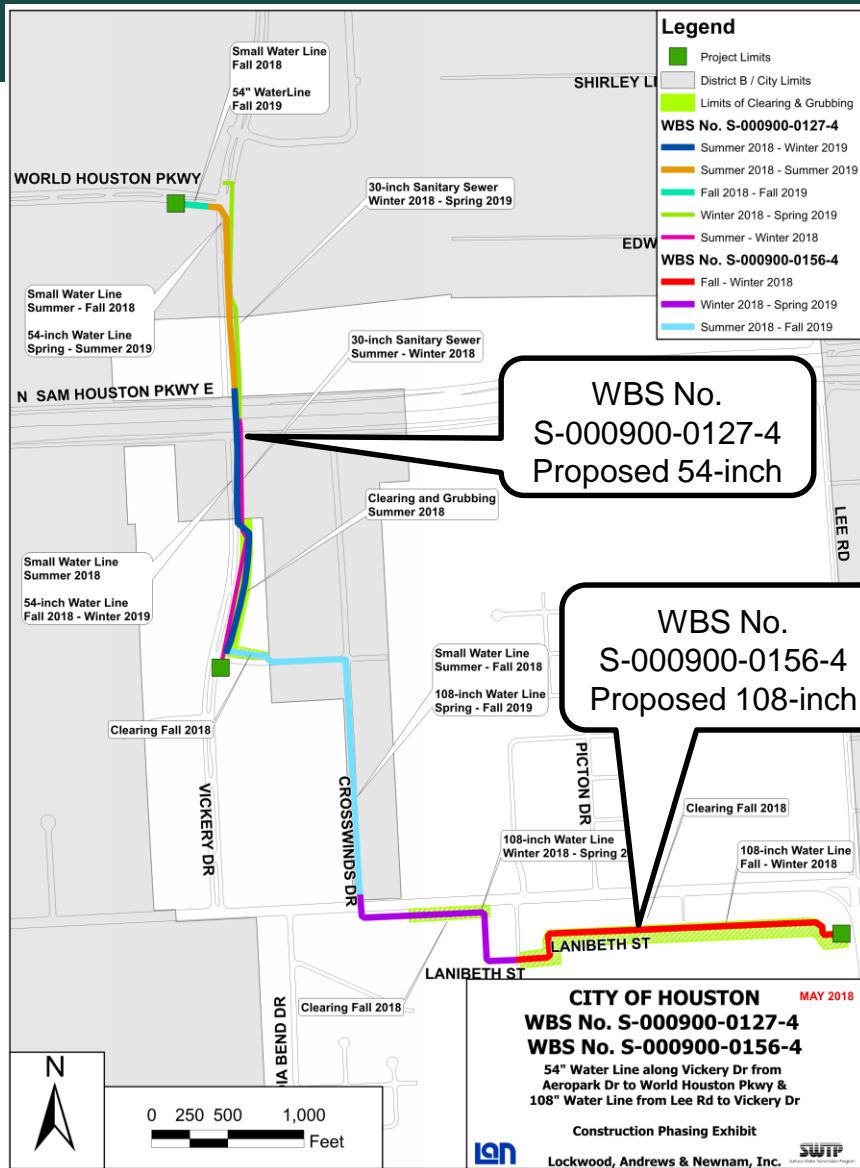
4

CONTACT INFORMATION

5

QUESTION & ANSWERS

PROJECT STATUS



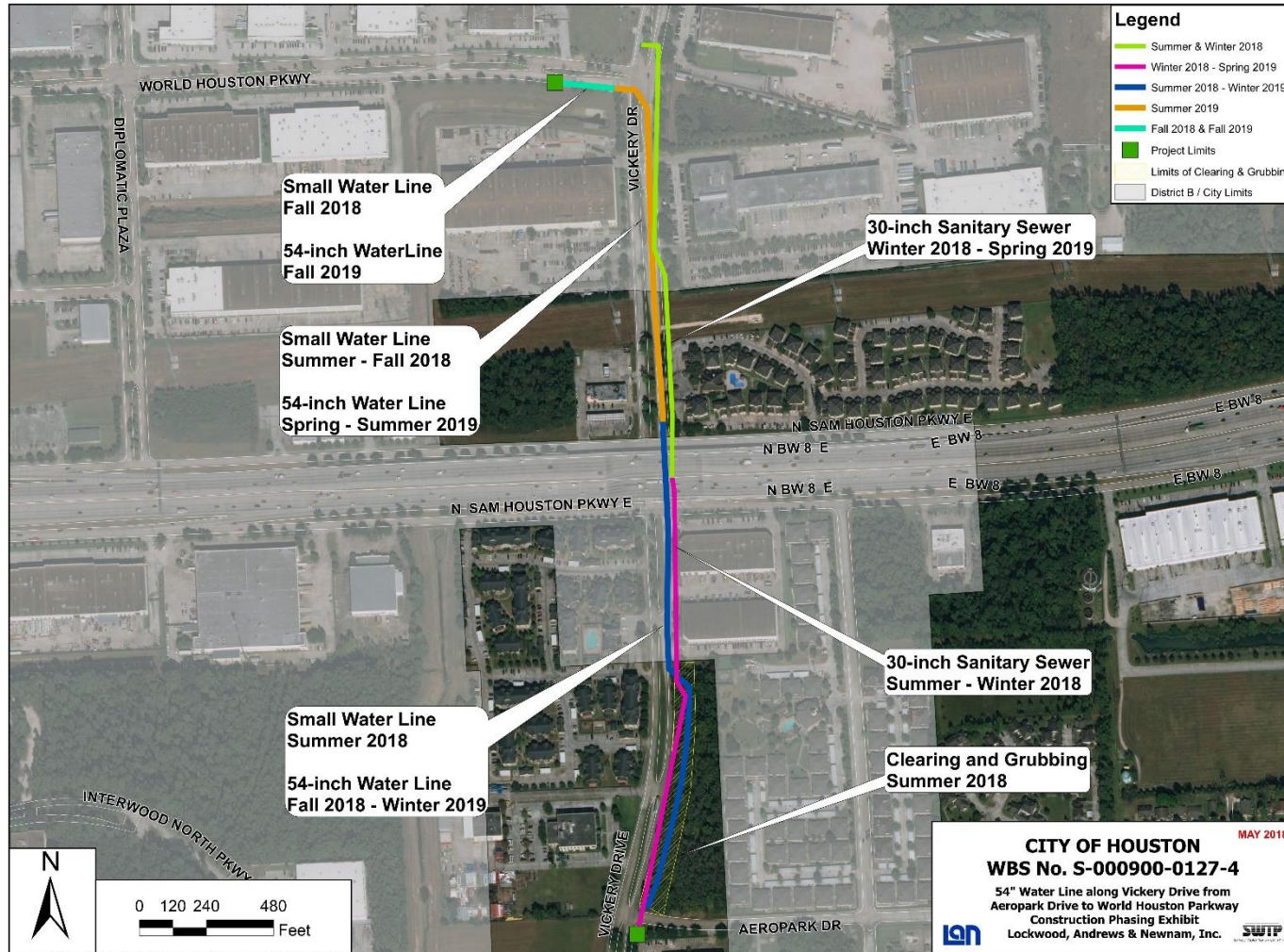
- ❖ WBS No. S-000900-0127-4:
 - Construction Begins June 2018
- ❖ WBS No. S-000900-0156-4 :
 - Construction Begins June 2018

Note: Expected dates are estimates and are subject to change



54-Inch Water Line (WBS No. S-000900-0127-4)

Project Schematic and Schedule



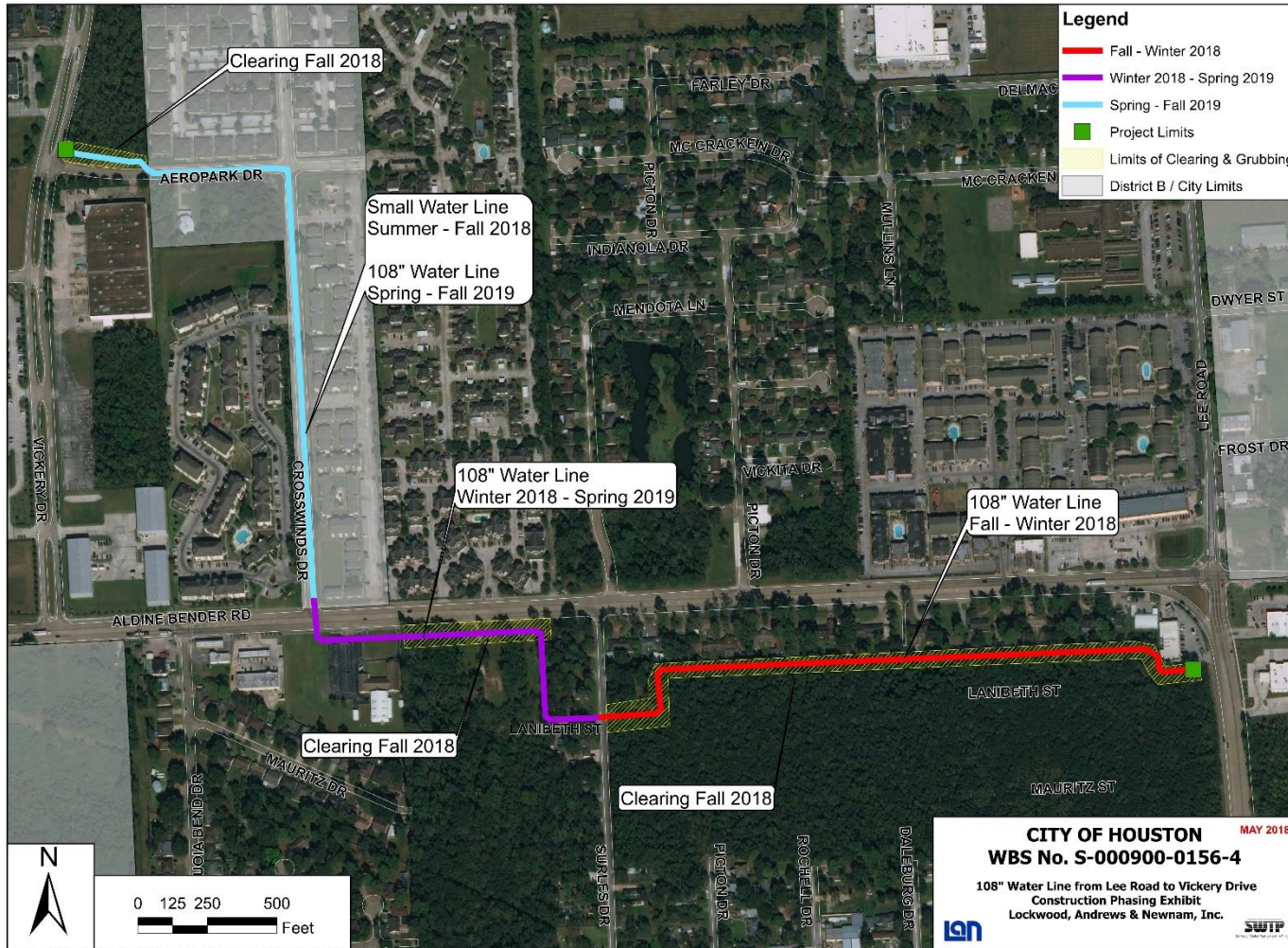
Note: Expected dates are estimates and are subject to change

Contact us at pwecip@houstontx.gov



108-Inch Water Line (WBS No. S-000900-0156-4)

Project Schematic and Schedule



Note: Expected dates are estimates and are subject to change

Contact us at pwecip@houstontx.gov



54-Inch Water Line (WBS No. S-000900-0127-4) 108-Inch Water Line (WBS No. S-000900-0156-4) Identified Improvement Needs



Utility improvements (Small and Large Diameter Water and Sanitary Sewer)



Upgrades to pavement conditions and mobility where impacted



Storm drainage improvements where impacted



Pedestrian safety and wheel chair ramps



54-Inch Water Line (WBS No. S-000900-0127-4)

108-Inch Water Line (WBS No. S-000900-0156-4)

Construction – Project Info



1. *Keep your door hanger throughout the project*

- Lists phone numbers you need
- Lists the Project Number
 - Number needed when you call or write us

2. *Meet the Project Manager and Inspector*

- Will be your contact to resolve issues throughout construction

3. *Construction will occur within the City right-of-way and easements*

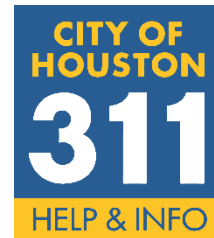
- City ROW generally extends 10-15 feet behind existing curb.



54-Inch Water Line (WBS No. S-000900-0127-4) 108-Inch Water Line (WBS No. S-000900-0156-4) Construction – How to Report a Problem



1. Contact 311
2. Report the project number and project name
3. Request issue be directed to Houston Public Works - Capital Projects
4. Be as complete as possible with your concern



Contact us at: pwecip@houstontx.gov



54-Inch Water Line (WBS No. S-000900-0127-4) 108-Inch Water Line (WBS No. S-000900-0156-4) How to Prepare for Construction



Prepare for Construction

- Document the conditions of your yard and sprinkler head locations; the contractor will do the same.
- Remove special landscaping features (i.e., fountains, lawn art)
- Find alternative parking
- Plan for water service interruption
- Be mindful of protective barriers like:
 - Traffic Control Devices
 - Concrete Traffic Barrier & Barricades
 - Steel plates
 - Orange fence, etc.



54-Inch Water Line (WBS No. S-000900-0127-4) 108-Inch Water Line (WBS No. S-000900-0156-4) What to Expect During Construction



Potential Service Impacts:

- Potential water service impacts
- Potential parking/driveway access impacts
- Trash/recycling receptacle location impacts
- Tree removal/replacement per plan
- Potential for school bus re-routes
- Temporary Metro Bus Stops



54-Inch Water Line (WBS No. S-000900-0127-4) 108-Inch Water Line (WBS No. S-000900-0156-4) What to Expect During Construction



Water Services

- Potential for service interruption:
 - Waterline replacement - notification 24 to 48 hours in advance
 - Periodic
 - May last 2 to 4 hours
- Accidental/Unplanned Interruption – the contractor will work quickly to restore services.



54-Inch Water Line (WBS No. S-000900-0127-4) 108-Inch Water Line (WBS No. S-000900-0156-4) What to Expect During Construction



Parking and Driveway Access

- Short-periods of limited access to your driveway
- Park elsewhere and walk to your home
- Contact us immediately if needing handicapped access
- Short-periods of no on-street parking
- Construction will alternate each side of the street on different schedules
- Suggest working with neighbors on the opposite side – they may need your help when it's their turn.



54-Inch Water Line (WBS No. S-000900-0127-4) 108-Inch Water Line (WBS No. S-000900-0156-4) What to Expect During Construction



Trees

- Our goal is to minimize impact to trees during construction.
 - We accomplish this by working with the City Arborist.
- Some trees may be removed as part of the project
 - New trees may be planted elsewhere in the project area, per approved plan by Arborist.

Trash/Recycling Pick-up

- Potential for service interruption:
 - Waste receptacles should be placed on the non-affected side of the street



54-Inch Water Line (WBS No. S-000900-0127-4)

108-Inch Water Line (WBS No. S-000900-0156-4)

What to Expect During Construction



School Buses

- The City of Houston and the Contractor work with all schools to minimize impacts to students, school bus schedules, and school bus stops
- School buses may need to use different streets temporarily

Metro Buses

- Stops will be rerouted by Metro as needed



54-Inch Water Line (WBS No. S-000900-0127-4) 108-Inch Water Line (WBS No. S-000900-0156-4) What to Expect During Construction



RESTORATION

- Restoration of sprinkler systems, grass, etc. will be done during the final stage of construction.
- City does not approve final payment to contractor until restoration is complete.
- If you have concerns:
 - Document (writing, photo, etc)
 - Call 3-1-1
 - Do not make the repairs yourself



54-Inch Water Line (WBS No. S-000900-0127-4) 108-Inch Water Line (WBS No. S-000900-0156-4) Contact Information

Harper Brothers (constructing proposed work)

Corey Garnett, Project Manager	Corey.Garnett@harperbro.com 713-893-4593
Rene Vega, Superintendent	Rene.Vega@harperbro.com 281-245-7226

Construction Management Staff (oversight)

John N. Mudd, Project Manager	john.mudd@KCI.com (832) 975-1560
Cecil Daughtry - Field Inspector WBS No. S-000900-0127-4	cdaughtry@Huitt-Zollars.com (281) 496-0066
Robert Legenfeld – Field Inspector WBS No. S-000900-0156-4	rlegenfeld@omegaengineers.com (281) 647-9182



54-Inch Water Line (WBS No. S-000900-0127-4)
108-Inch Water Line (WBS No. S-000900-0156-4)
IMPORTANT LINKS



For a complete listing of Frequently Asked Questions please visit:

- <https://www.publicworks.houstontx.gov/e cd/faqs.html>

Today's presentation and additional project information can be found at:

<https://rebuildhouston.org/community-engagement>





THANK YOU

Next up is Q&A followed by a Breakout Session