



Southland Area Paving and Drainage

CIP No. M-410024-0001

PROJECT INFORMATION

Updated April 2017



About the Project Area

This Capital Improvement Plan project provides storm water drainage and paving improvements to improve drainage of streets and reduce the potential for structural flooding in the Southland neighborhood.

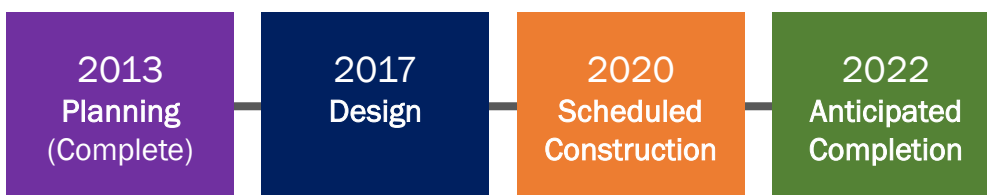
Project limits encompass the areas bounded by Old Spanish Trail to the north, State Highway (SH) 288 to the west, Scott St. to the east, and Alice St. to the south.

The Southland Paving and Drainage Project will enter the Design phase of the project in 2017.

The project is funded and programmed for construction in late 2020 or early 2021.

PROJECT TIMELINE

Southland Phase I



**Timeline subject to change.*

Public Input Meeting held:

June 7, 2016

Meeting Location:

Foster

Elementary School

3919 Ward St.

Houston, TX 77021

Presenter:

Amanda Marshall, P.E.

Project Manager

Infrastructure

Planning Branch

Department of Public

Works & Engineering

(PWE)

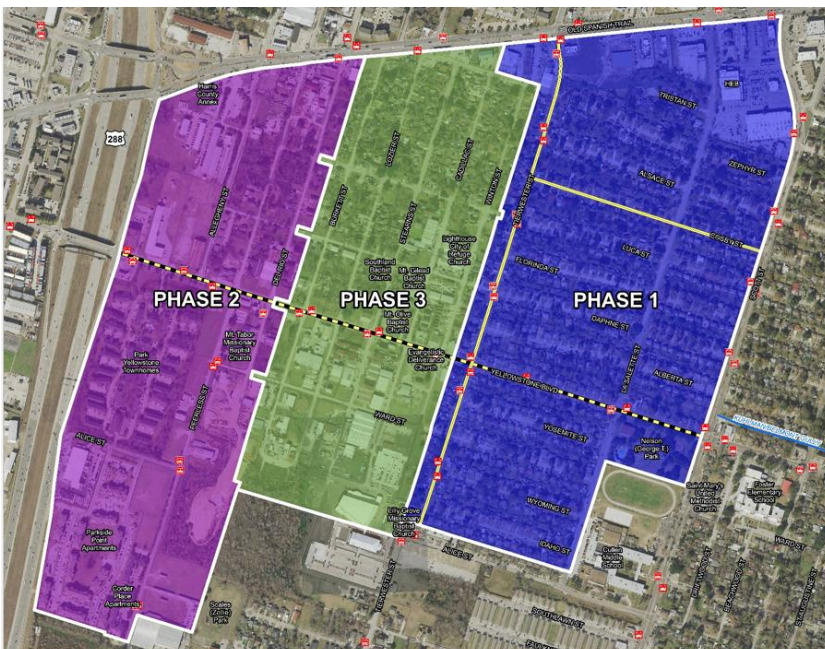
Total # of Attendees:

25

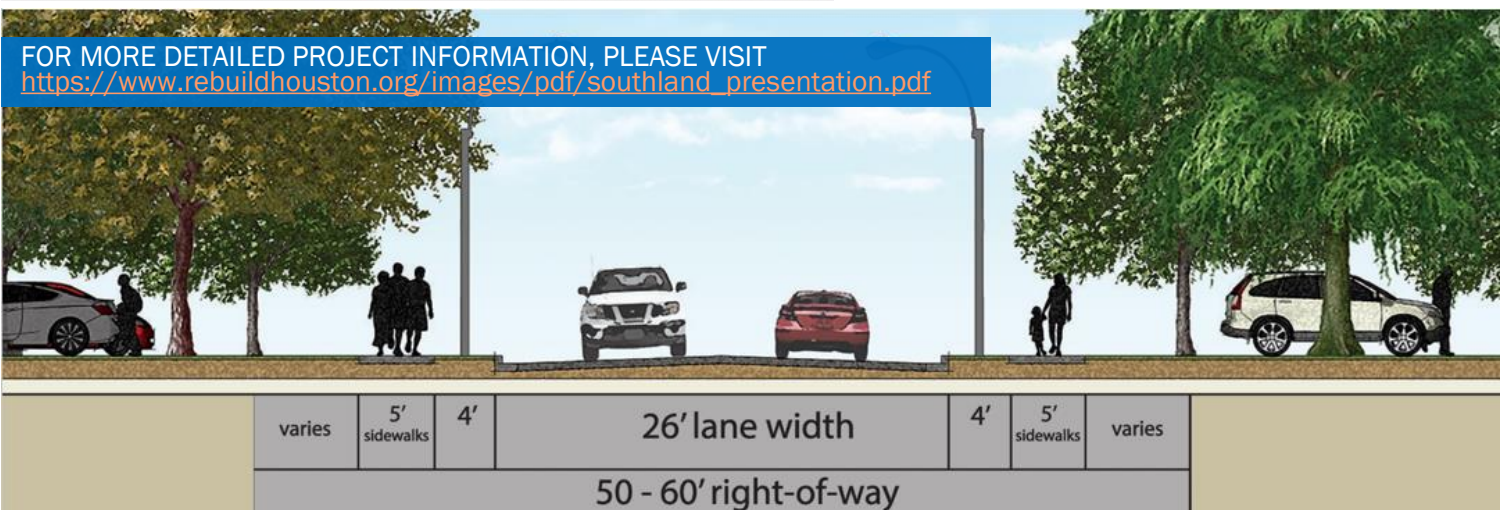
Project Details

Proposed improvements as presented at the public meeting include:

- All work done within the existing right-of-way (ROW)
- Reconstruction of roadway
- Reconfiguration of the storm sewer layout
- Adding major trunk lines
- Adding minor laterals to eliminate ponding conditions
- Roadside ditches reconstructed into curb and gutter
- Adding and upsizing underground storm sewer
- Water and wastewater lines replaced as needed



LEGEND	
	METRO BUS STOP
BIKWAY MASTERPLAN ROUTE	
	DEDICATED ON-STREET BIKEWAY
	SHARED ON-STREET BIKEWAY
PROPOSED SUBPROJECT PHASING	
	PHASE 1
	PHASE 2
	PHASE 3



*Project design subject to change.

Summary of Public Comments

Traffic and Bike Lanes

Residents are concerned about speeding. They want to know if stop signs can be placed along certain intersections, mainly on Zephyr St. and Luca St. They want speed bumps to be added as well. Residents do not support the addition of bike lanes as they feel that bike lanes won't be used. Instead, they request that the streets be widened.

PWE Response:

A traffic study will be completed during the design phase that will include all-way (four-way) stop sign warrants at selected intersections as well as speed-limit signage locations. Work on Yellowstone Blvd. (where the bike lane is proposed) is limited to the installation of a new drainage system and the related pavement reconstruction. Therefore, the street section for Yellowstone will remain the same until the time at which Yellowstone is its own project.

Major Categories or Areas of Concern Are:

Traffic

Bike Lanes

Drainage

Street Signage

Comment Period:

June 7 –
July 7, 2016

of Comments Received:

11



For more information on the City of Houston Bikeways Program, Please visit:

<https://www.houstonbikeways.org/>

Summary of Public Comments

Drainage

Some residents feel that the storm drainage line should be constructed on Yellowstone Blvd. between Scott St. and SH 288 on the eastbound lane. Other residents say that their street was recently rebuilt and now they have standing water in the driveway.

PWE Response

A topographic survey and other planning information will be used to determine the optimal location of the storm drainage line on Yellowstone. This project does not include work on recently rebuilt streets under the 2008 Neighborhood Street Reconstruction Project. The problem of standing water should be reported to 3-1-1. This type of problem is typically resolved under a maintenance project. The concern was noted to determine if it is optimal to include gutter reconstruction in the design in order to address this concern.



Pavement / Drainage

Major Categories or Areas of Concern Are:

Traffic

Bike Lanes

Drainage

Street Signage

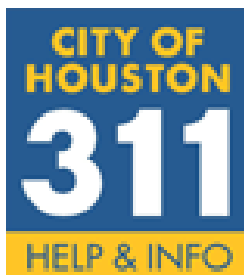
Summary of Public Comments

Additional Concerns:

Signage and pavement markings to address crossing safety near schools will be finalized during the project design phase. Drainage concerns related to recent storm events such as ponding and blocked inlets should be reported to 3-1-1.

PWE Response

METRO bus stop access and locations will be coordinated with METRO during design phase.



For more information on **drainage concerns**, street signs and other related issues Please visit: 3-1-1.

Major Categories or Areas of Concern Are:

Traffic

Bike Lanes

Drainage

Street Signage



For more information on **Metro bus stops and more**, please visit:

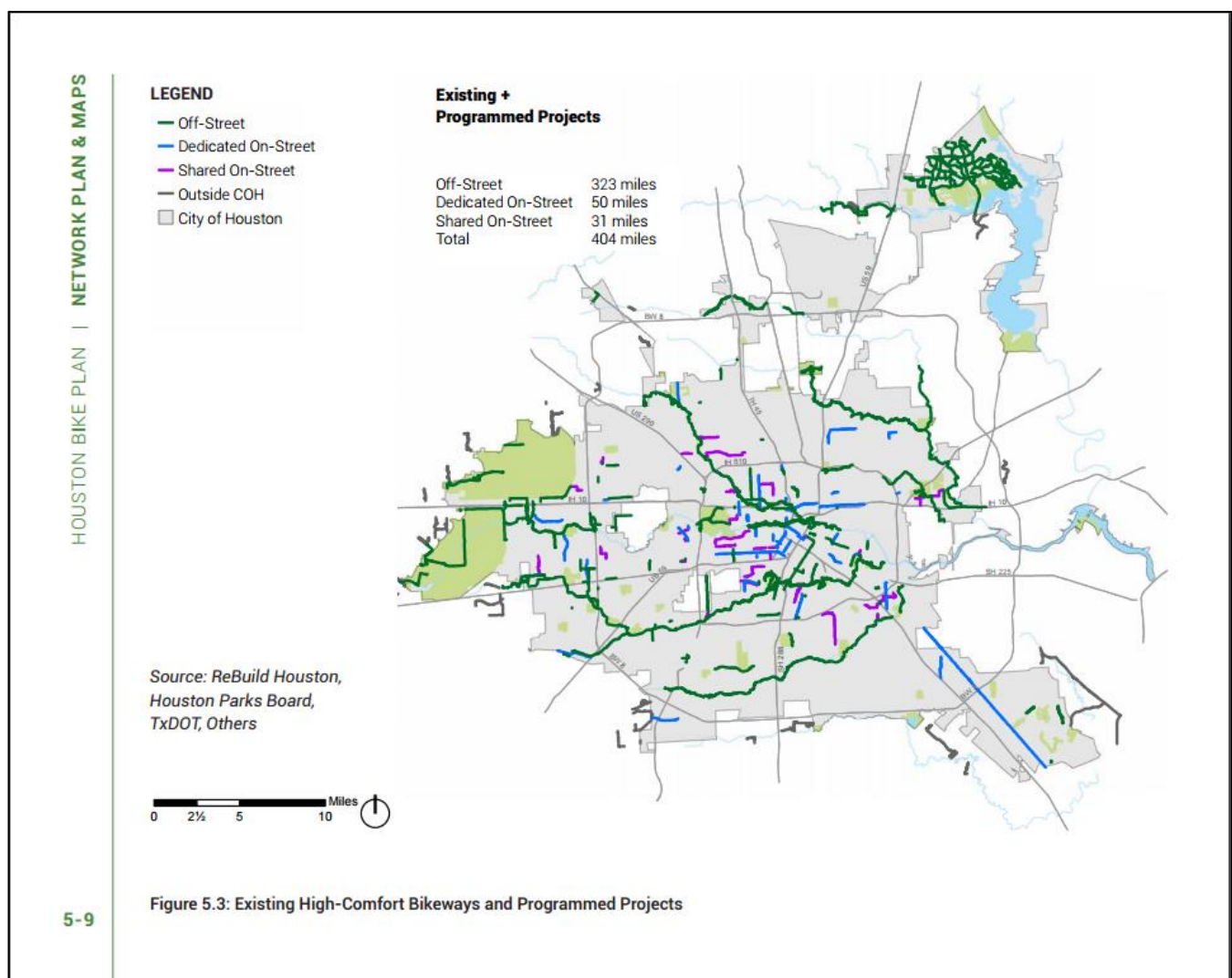
<http://www.ridemetro.org/Pages/PedestrianSafety.aspx>

About the Houston Bike Plan

The City of Houston developed the Houston Bike Plan through a 12-month planning effort to update the City's Comprehensive Bikeway Plan originally adopted in 1993. The City and the Houston region have made great strides in improving people's ability to bike to more destinations, earning a Bronze-level Bicycle Friendly Community award from the League of American Bicyclists in 2013. New trails are being built along our bayous, new protected bikeways have been installed, and more people are riding all over the city.

For more information, please visit:

<http://houstonbikeplan.org/about-the-houston-bike-plan>



About Complete Streets and Rebuild Houston

ABOUT COMPLETE STREETS

Houston Complete Streets and Transportation Plan (Executive Order 1-15) guides the development of mobility planning and design of the City of Houston street and drainage projects. This Executive Order identifies goals and steps to move the city toward the achievement of Complete Streets through the planning, designing, budgeting, constructing, and reconstructing of all transportation improvements. The Executive Order recognizes that all streets are not the same and that reconstruction of the public right-of-way (ROW) should strongly utilize context sensitive design, incorporating local development context, and also take into account the role a particular corridor plays in the region's multimodal transportation networks. The introduction of these programs, as well as other initiatives that address multimodal safety on the region's roadways, requires rethinking existing planning and design. Evaluating existing approaches ensures that projects developed and constructed by the City of Houston meet these objectives.

ABOUT REBUILD HOUSTON

The reconstruction of the City's street and drainage infrastructure following the guidelines of the Complete Street and Transportation Plan is made possible through resources provided by the ReBuild Houston Program. ReBuild Houston is a voter-initiated and voter-approved, Pay-As-You-Go program to address the City of Houston's street and drainage infrastructure needs in a systematic, prioritized and objective manner. ReBuild Houston is a part of the City's Capital Improvements Program (CIP) and the 10-Year plan for Streets & Drainage. Street & Drainage improvement projects are separated into three phases of planning, design, and construction which allows for a much more detailed and objective planning process that complements the City's established Capital Improvement Plan.

To learn more about the ReBuild Houston and Street & Drainage infrastructure improvement process visit www.rebuildhouston.org.

