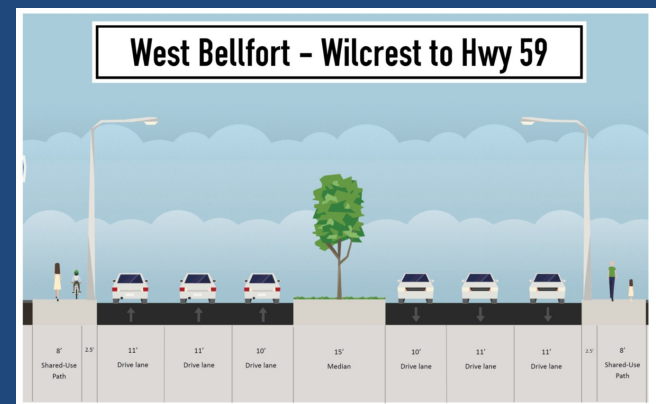
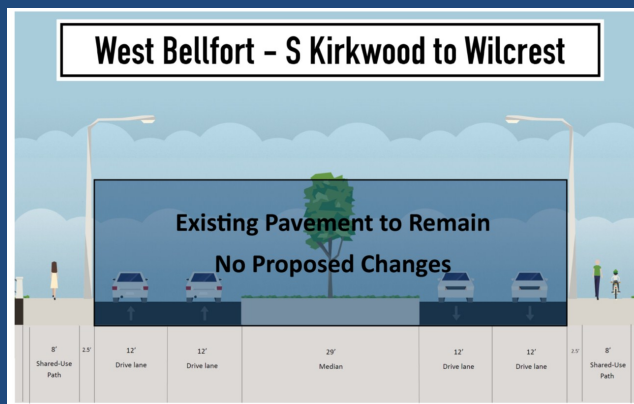
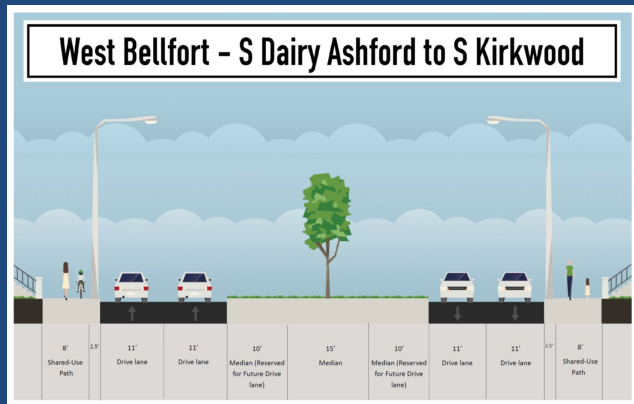
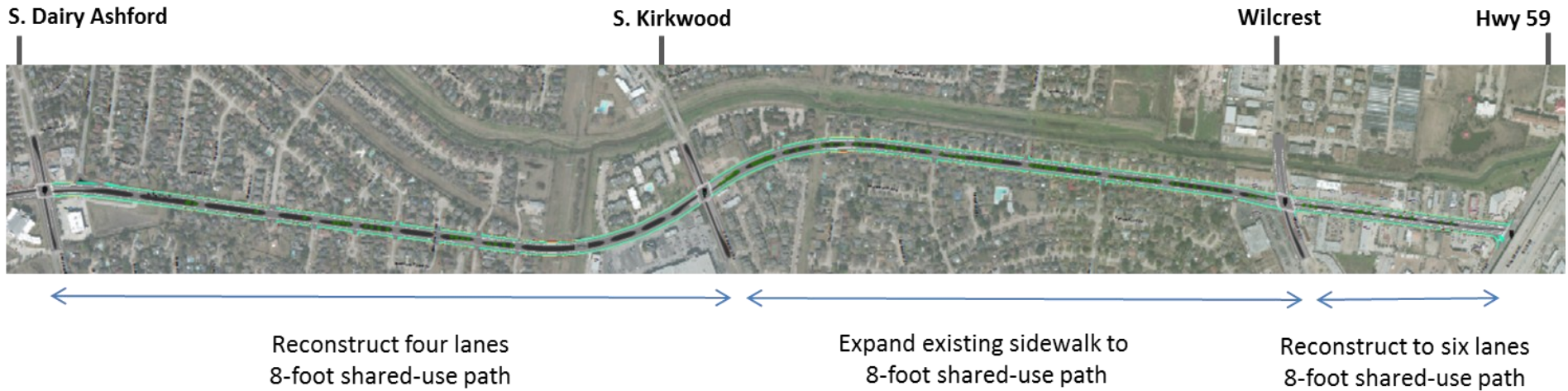


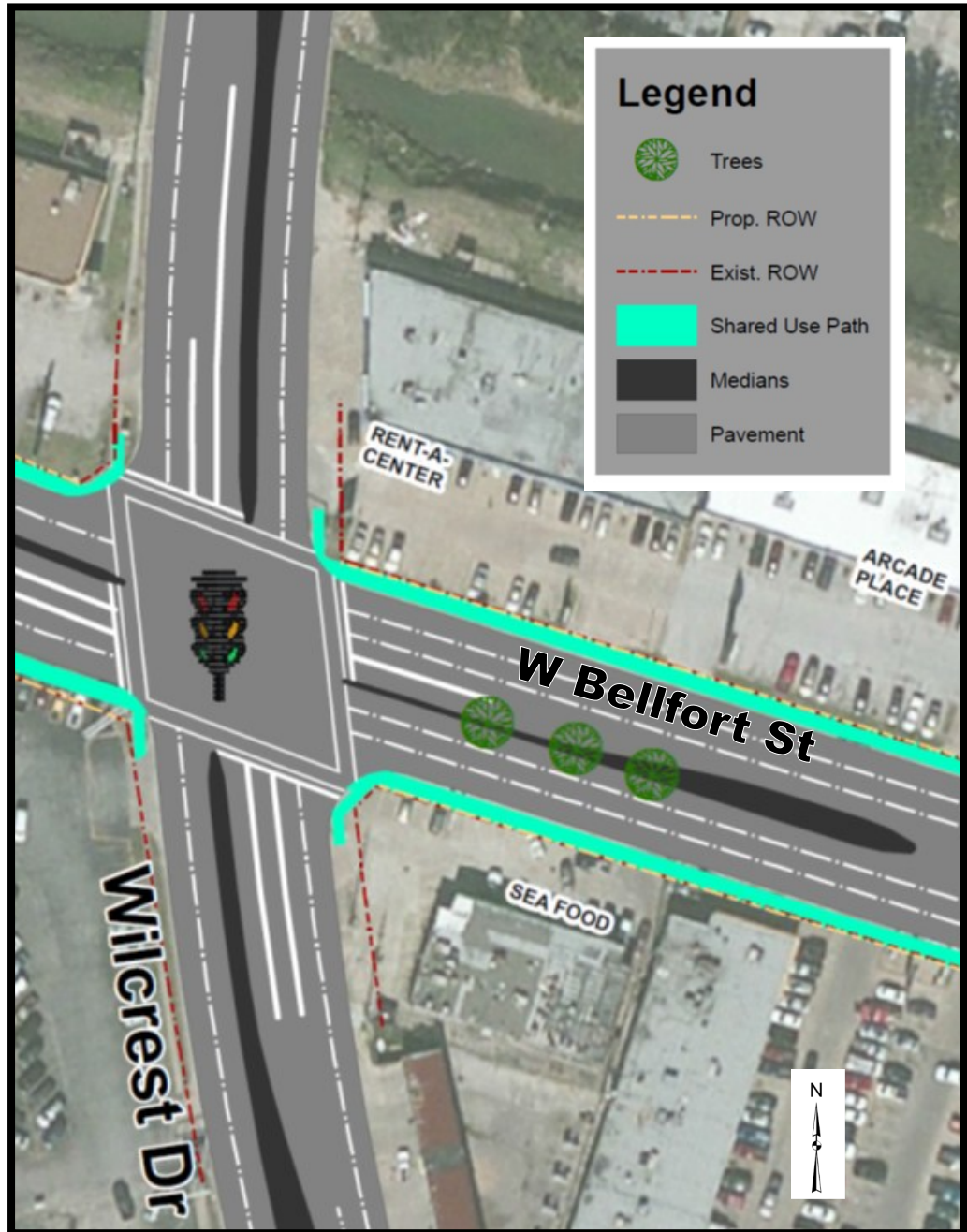
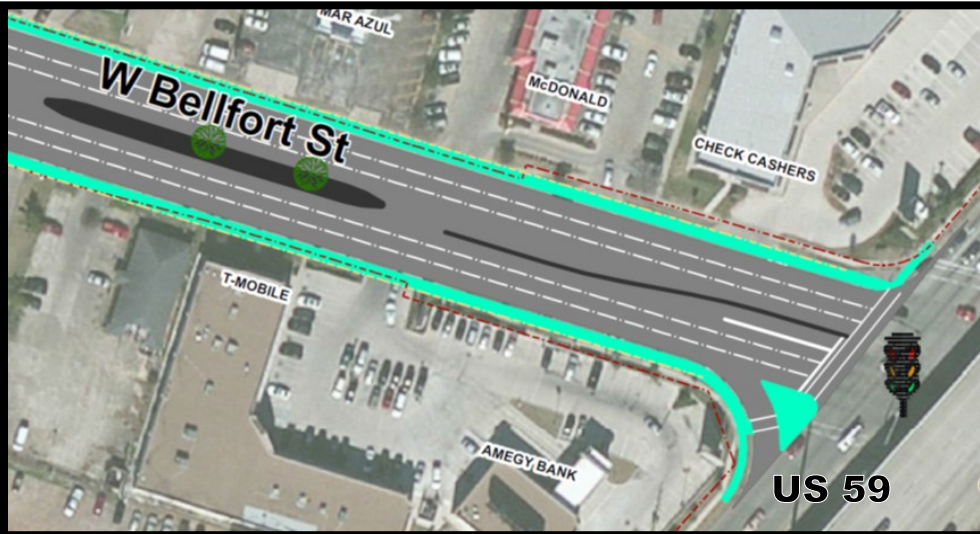
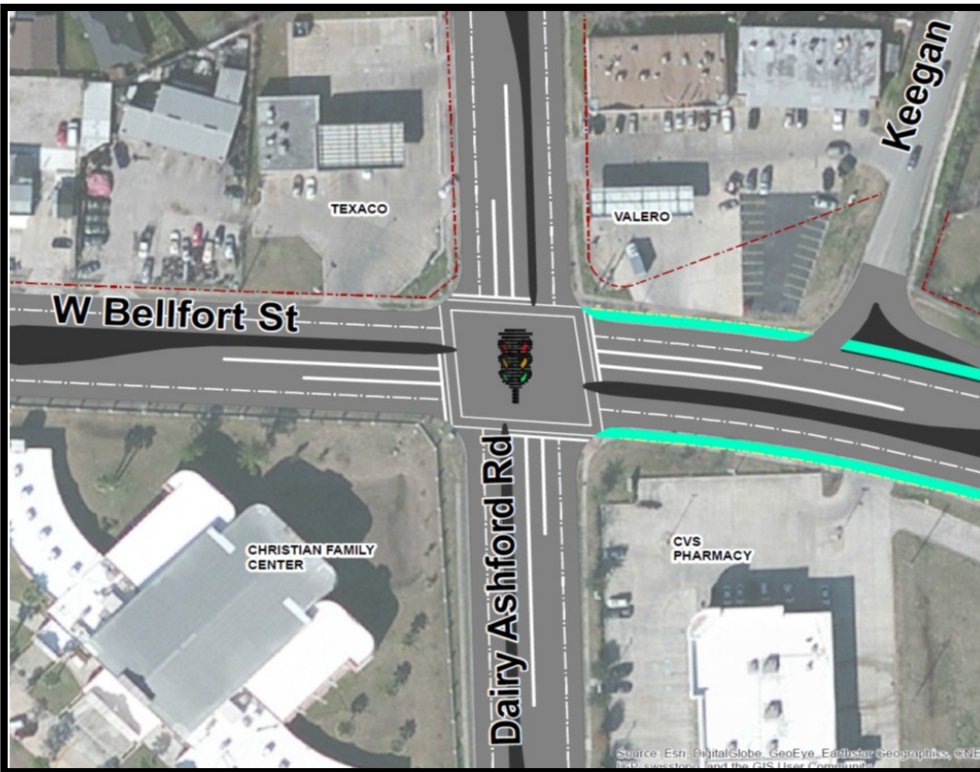
WEST BELLFORT CORRIDOR RECONSTRUCTION



West Bellfort Reconstruction (N-100022) - South Dairy Ashford to Highway 59

This Capital Improvement Plan project was identified and funded with design starting in 2015 and construction planned for 2019. Reconstruction between South Dairy Ashford and South Kirkwood will include full reconstruction of the roadway. The roadway between South Kirkwood and Wilcrest was recently reconstructed and will remain as is. Reconstruction between Wilcrest and Highway 59 will include expanding the number of travel lanes from 4 to 6 to accommodate travel volumes. The entire length between South Dairy Ashford to Highway 59 will include constructing an 8-foot shared use path on both sides of the road. Underground storm drainage, sewer and water lines will also be replaced in the two segments being reconstructed. All work will be within the existing right-of-way.





email us your comments at: pweplanning@houstontx.gov

Please provide your input before **DECEMBER 15th 2015**