



Greenbriar Street Preconstruction Community Meeting

WBS No. N-100004-0001-4

Hien Pham, *P.E.*

August 22, 2017



AGENDA



OVERVIEW OF THE PROJECT



PROJECT SCOPE AND PHASING



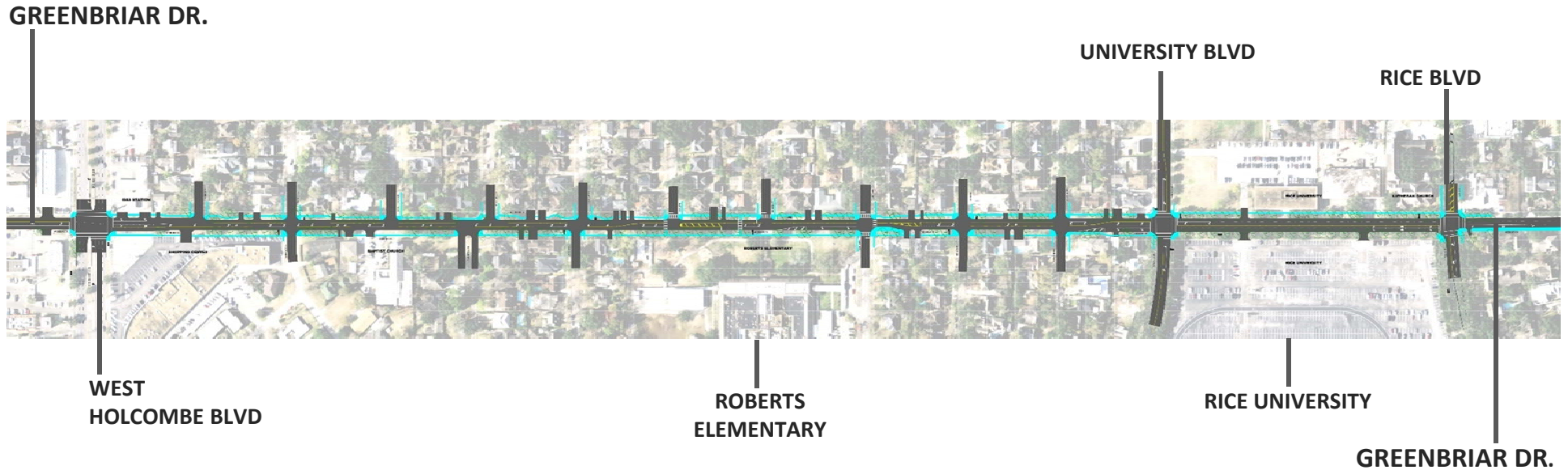
WHAT TO EXPECT DURING CONSTRUCTION



CONTACT INFORMATION

Greenbriar Reconstruction

Rice Boulevard to West Holcombe



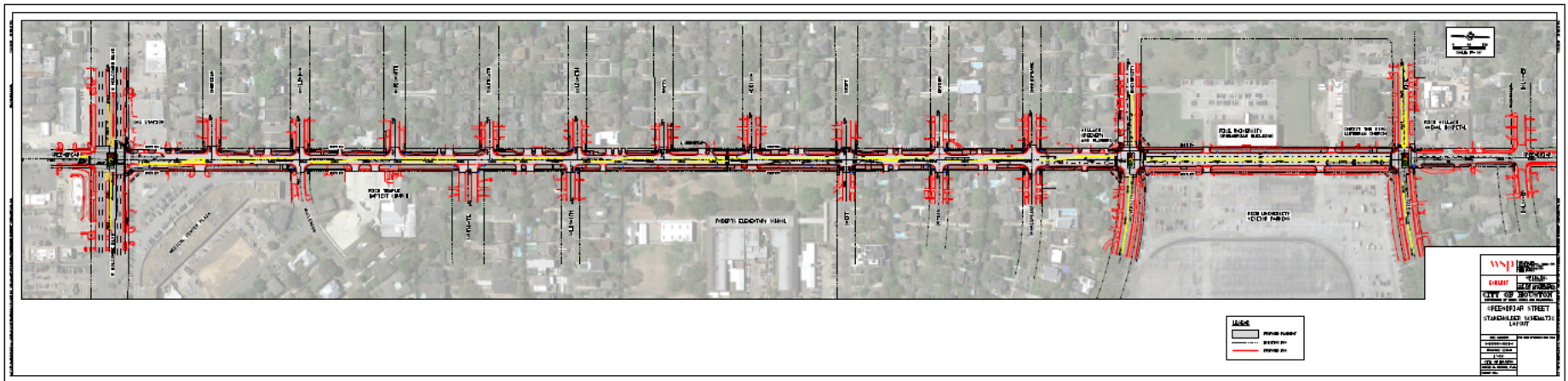
Project Limits: Rice Boulevard to West Holcombe

Construction Start: September 2017 (DOUBLE CHECK)

Anticipated Completion: Spring 2019 (DOUBLE CHECK)

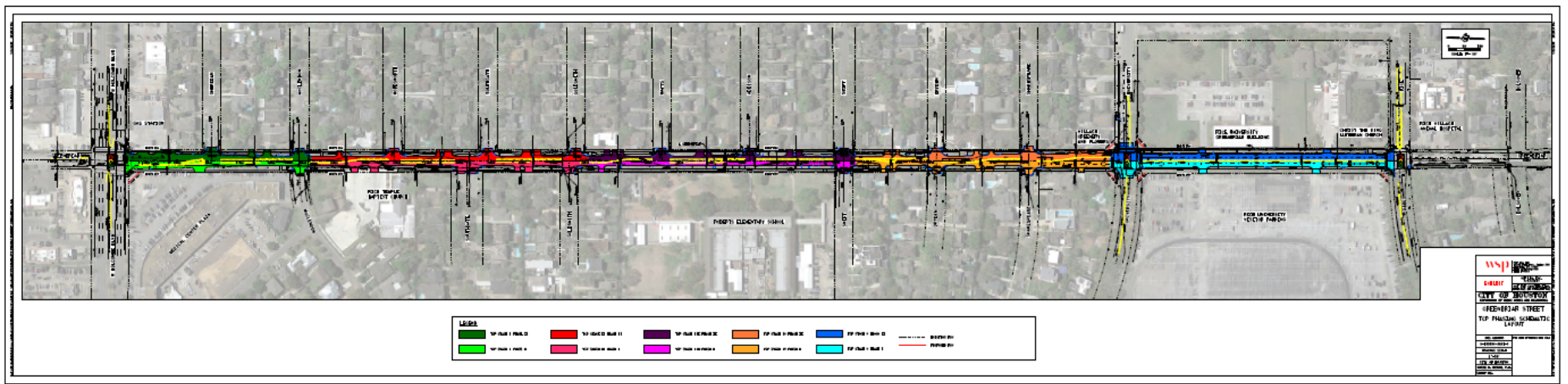
Greenbriar Street Paving and Drainage Project | WBS# N-100004-0001-4

Exhibit Schematic



Greenbriar Street Paving and Drainage Project | WBS# N-100004-0001-4

TCP Phasing Exhibit



PROJECT SCOPE

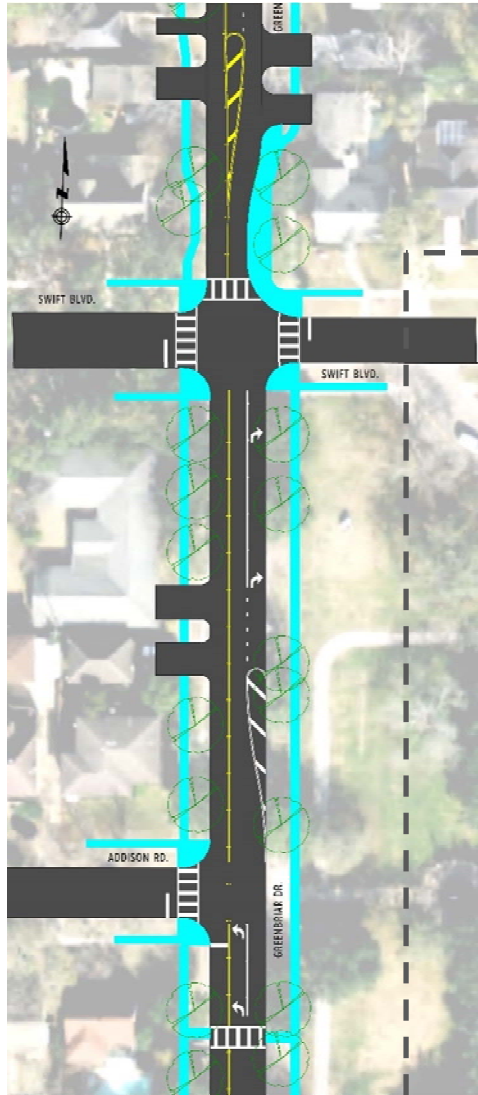
The project will include:

- Reconstructed roadway with curbs and gutters
- Reconstructed sidewalks, driveways and curb ramps
- Reconstructed storm sewer, sanitary sewer, and waterlines

The project will:

- **Improve mobility**
 - *The roadway improvements will enhance the area as well as the ride.*
- **Reconstruct existing sidewalks and add new sidewalks**
 - *Sidewalks will be 5 feet wide (4 foot sidewalks will be constructed if possible in an effort to preserve trees)*
- **Reconstruct drainage system, sanitary sewer and waterlines**
 - *Upsized storm sewer system*
 - *Updates to sanitary sewer mains and services in certain areas*
 - *Updates to water mains and services in certain areas*

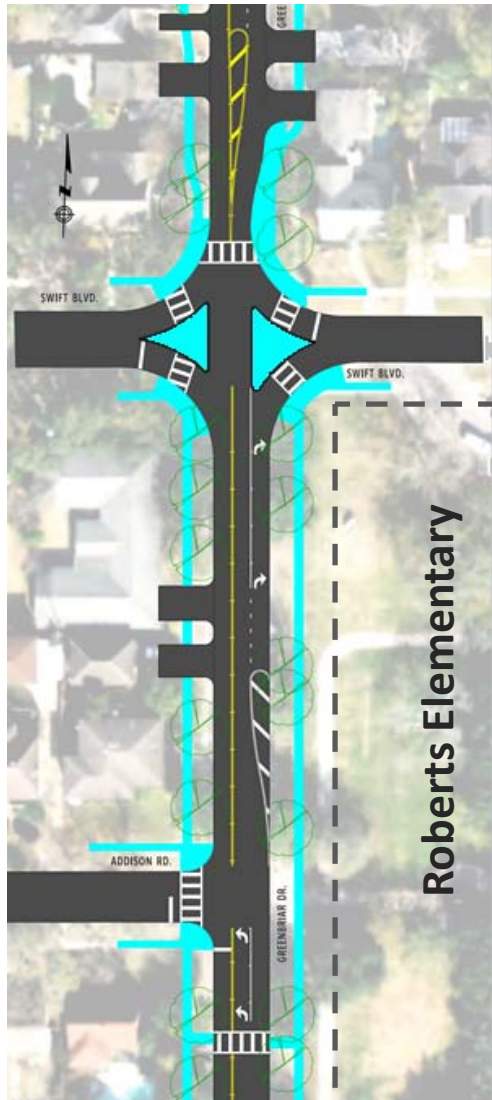




Roberts Elementary

Preferred Solution Greenbriar and Swift

- No left turns at Swift from northbound and southbound lanes of Greenbriar
- Alternate routes at Addison and Dryden
- Better through traffic
- Safer pedestrian crossing – shorter walking distance, more sidewalk space



Alternate Solution Greenbriar and Swift

- No left turns at Swift
- Medians force right turns only
- Alternate routes at Addison, Dryden, Morningside, Montclair
- Safer pedestrian crossing – “islands of refuge”
- Better through traffic

PROJECT PERSONNEL

- *City of Houston Staff*

- **Hien Pham** (Managing Engineer)
- **Marcus Baskin** (Project Manager)
- **Mike Beezley** (Senior Inspector)

- *Contractor*

- **Conrad Construction Co., LTD** (constructing proposed work)



FAQs

MY PROJECT INFORMATION

- ***Keep your door hanger throughout the project***
 - Lists phone numbers you need
 - Lists the “WBS” Project Number
 - WBS Number needed when you call or write us
- ***Meet your Job Superintendent or Inspector***
 - Will be your contact to resolve issues throughout construction
- ***Construction will occur in City right-of-way***
 - City right-of-way generally extends 10 to 15 feet into your yard



FAQs

HOW TO REPORT A PROBLEM



3-1-1

- Report the WBS Number
- Request issue be directed to PWE Engineering and Construction Division
- Be as complete as possible with your concern



pwecip@houstontx.gov



FAQs

BEFORE CONSTRUCTION

–How to Prepare

- Document the conditions of your yard and sprinkler head locations; the contractor will too
- Remove special landscaping features (i.e., fountains, lawn art)
- Find alternative parking
- Plan for water service interruption
- Be mindful of protective barriers
- Understand the scope of the work



FAQs

DURING CONSTRUCTION

-What to Expect

- Potential water service impacts
- Potential parking/driveway access impacts
- Trash/recycling receptacle location impacts
- Tree removal/replacement per plan
- Potential for school bus re-routes
- Temporary Metro Bus Stops



FAQs

DURING CONSTRUCTION

-Water Service



Potential for service interruption:

- Waterline replacement - notification 24 to 48 hours in advance
 - Periodic
 - May last 2 to 4 hours
- Accidental – contractor will work quickly to restore



FAQs

DURING CONSTRUCTION

-Parking and Driveway Access



- Short-periods of limited access to your driveway
 - Park elsewhere and walk to your home
 - Contact us immediately if needing handicapped access
- Short-periods of no on-street parking
 - Construction will alternate each side of the street on different schedules
 - Suggest working with neighbors on the opposite side – they may need your help when it's their turn.



FAQs

DURING CONSTRUCTION

-Driveways

- Driveway aprons will be reconstructed
- If construction is needed beyond the apron, the City will request a right-of-entry from property owner



FAQs

DURING CONSTRUCTION

-Trash/Recycling Pick-up

Potential for service interruption:

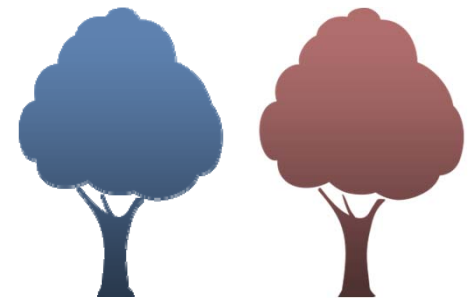
- Construction will alternate each side of the street on different schedules
- Waste receptacles should be placed on the non-affected side of the street



DURING CONSTRUCTION

-Trees

- Goal is to protect all trees
 - Work with City Arborist
 - Unhealthy trees will be removed
- Some trees may be removed as part of the project
 - New trees may be planted elsewhere in the project area, per plan
- Report damage to 3-1-1 or Job Inspector



DURING CONSTRUCTION

-School Buses

- The City of Houston and the Contractor work with all schools to minimize impacts to students, school bus schedules, and school bus stops
- School buses may need to use different streets temporarily

-Metro Buses

- Stops will be rerouted as needed



FAQs

RESTORATION

- Restoration of sprinkler systems, grass, etc. when construction is complete
 - City does not approve final payment to contractor until restoration is complete
- If concerns:
 - Document (writing, photo, etc)
 - Call 3-1-1
 - Do not make the repairs yourself



FAQs

COH PWE website

- www.publicworks.houstontx.gov/home

For a complete listing of Frequently Asked Questions please visit:

- www.publicworks.houstontx.gov/e cd/ faqs.html



Contact Slide

Presentation can be found at:

www.pwecip.houstontx.gov

If you experience any issues or concerns during construction, please contact 3-1-1





THANK YOU
Please find a breakout group at the Public Works & Engineering tables.





SWIFT BLVD