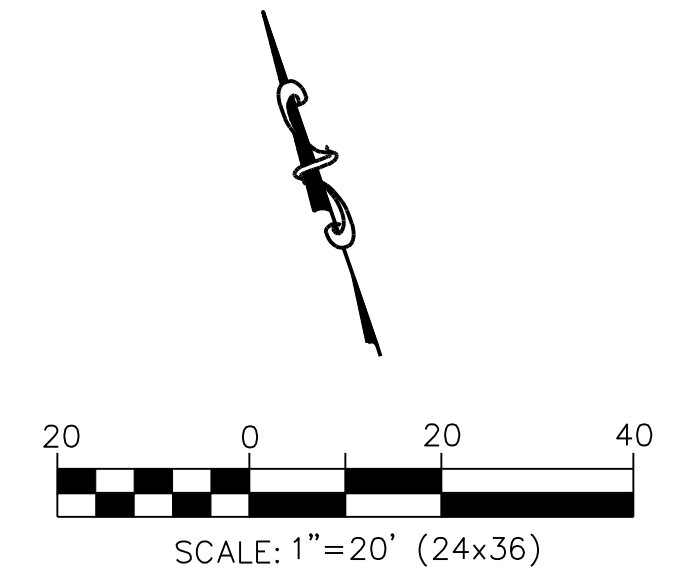
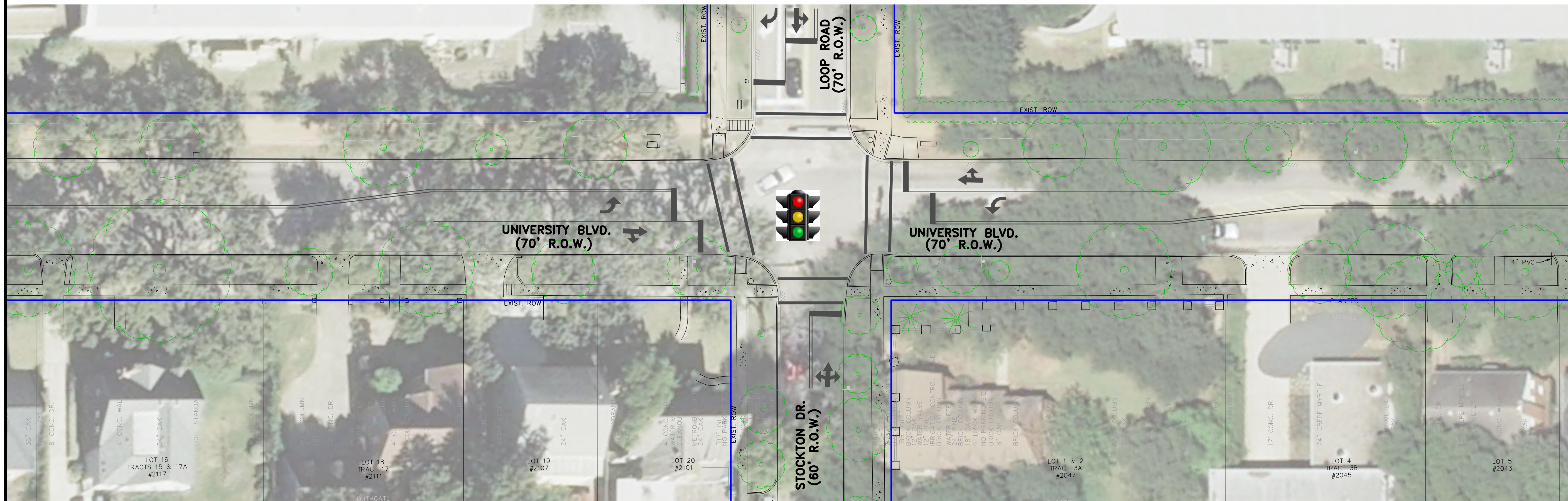






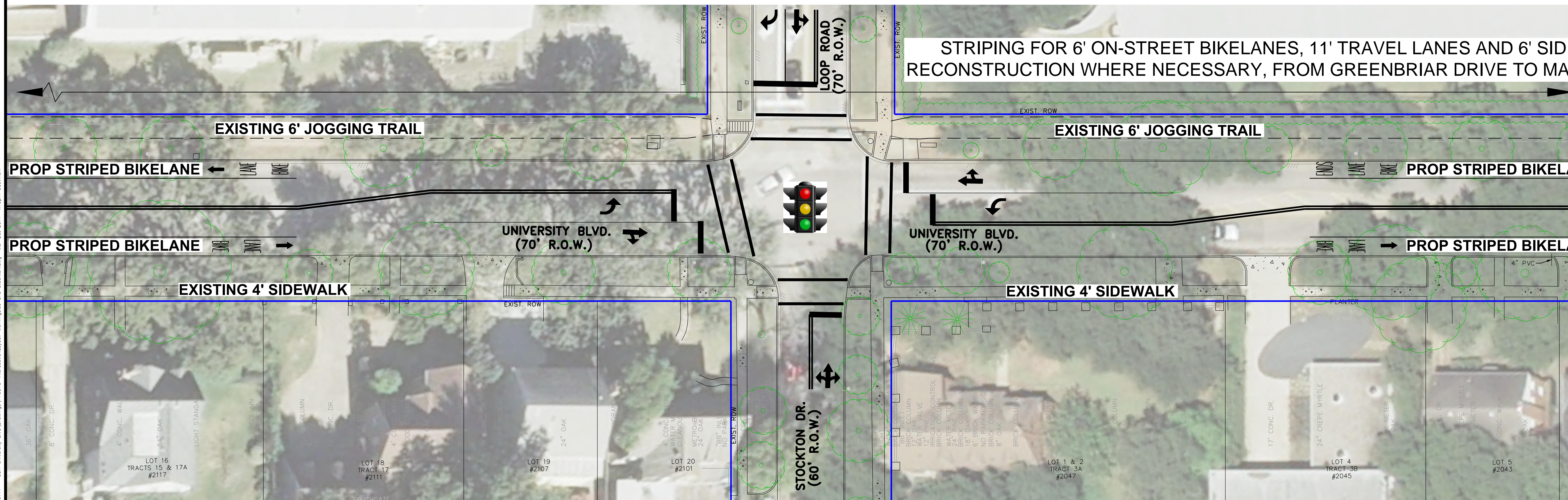


EXISTING STOCKTON DRIVE INTERSECTION



- LEGEND:**
-  EXISTING TRAFFIC SIGNAL
 -  PROP PAVEMENT BACK OF CURB
 -  PROP PAVEMENT EDGE
 -  PROP CONC. PVMT.
 -  PROP SIDEWALK
 -  EXISTING R.O.W.

PROPOSED STOCKTON DRIVE INTERSECTION



GCE ENGINEERING, INC.
 2505 PARK AVENUE, Phone: (281) 412-7008
 PEARLAND, TEXAS 77581 FAX: (281) 412-4623
 TBPE Registration No. F-7889

CITY OF HOUSTON
 DEPARTMENT OF PUBLIC WORKS AND ENGINEERING

UNIVERSITY BOULEVARD
 KIRBY DRIVE TO MAIN STREET
 PAVING AND DRAINAGE IMPROVEMENTS

INTERSECTION LAYOUT
 STOCKTON

Project No.: GCE C-0777	Scale: 1"=20' (24x36)	SHEET NO
Date: MARCH 20, 2017		EXHIBIT 5
Drawn by: BD	Checked by: AMR	

GC Engineering, Inc. v:\Projects\170315-IntersectionLayout-Houston\Stockton.dwg Mar 20, 2017 4:15pm bshelton