



Westbury Public Input Meeting

Carol Haddock, *Interim Deputy Director*



AGENDA

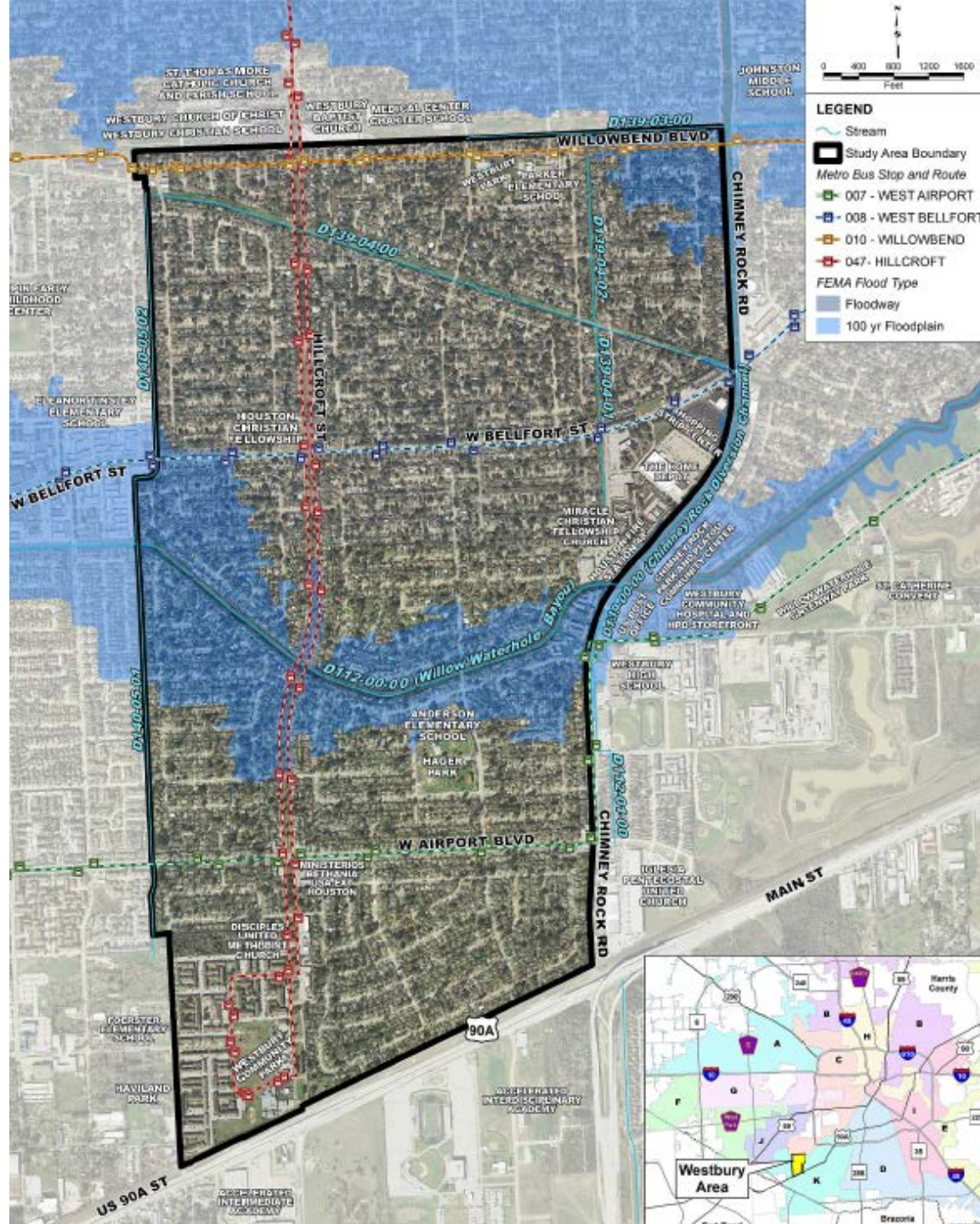
1 WHAT WE KNOW

2 PROPOSED PLAN

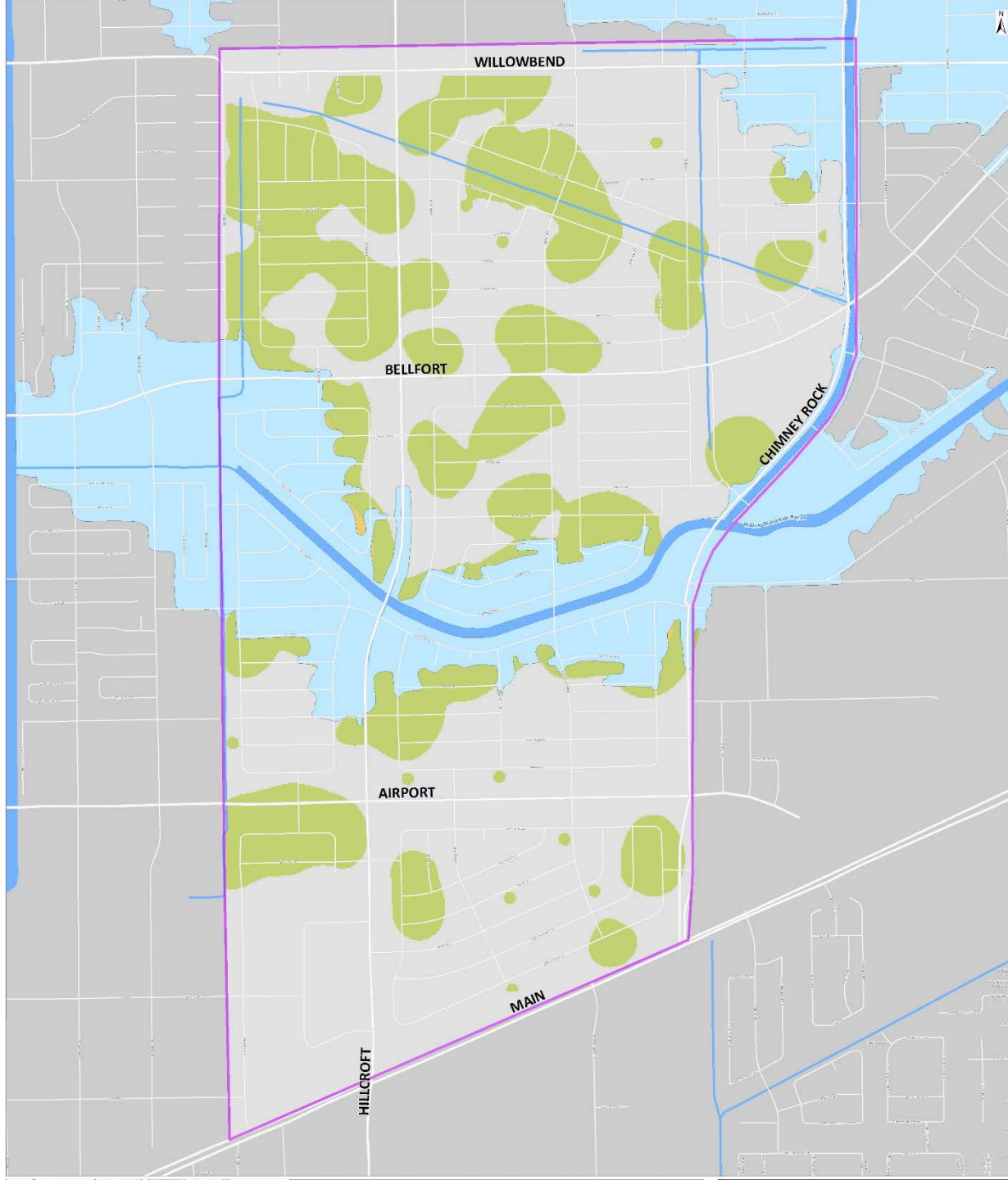
3 BREAKOUT GROUPS



Westbury Study Area



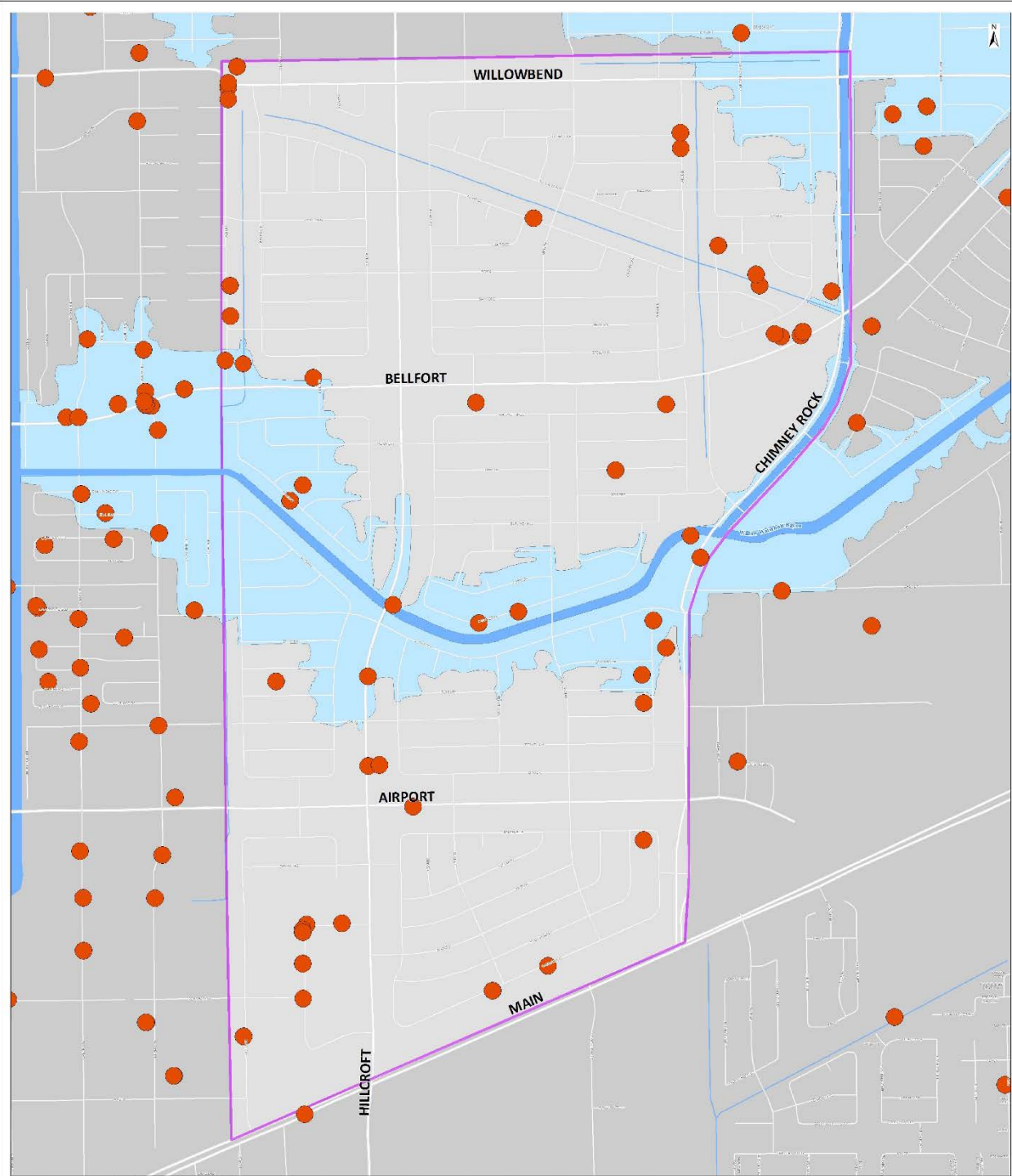
Reported Structural Flooding Areas



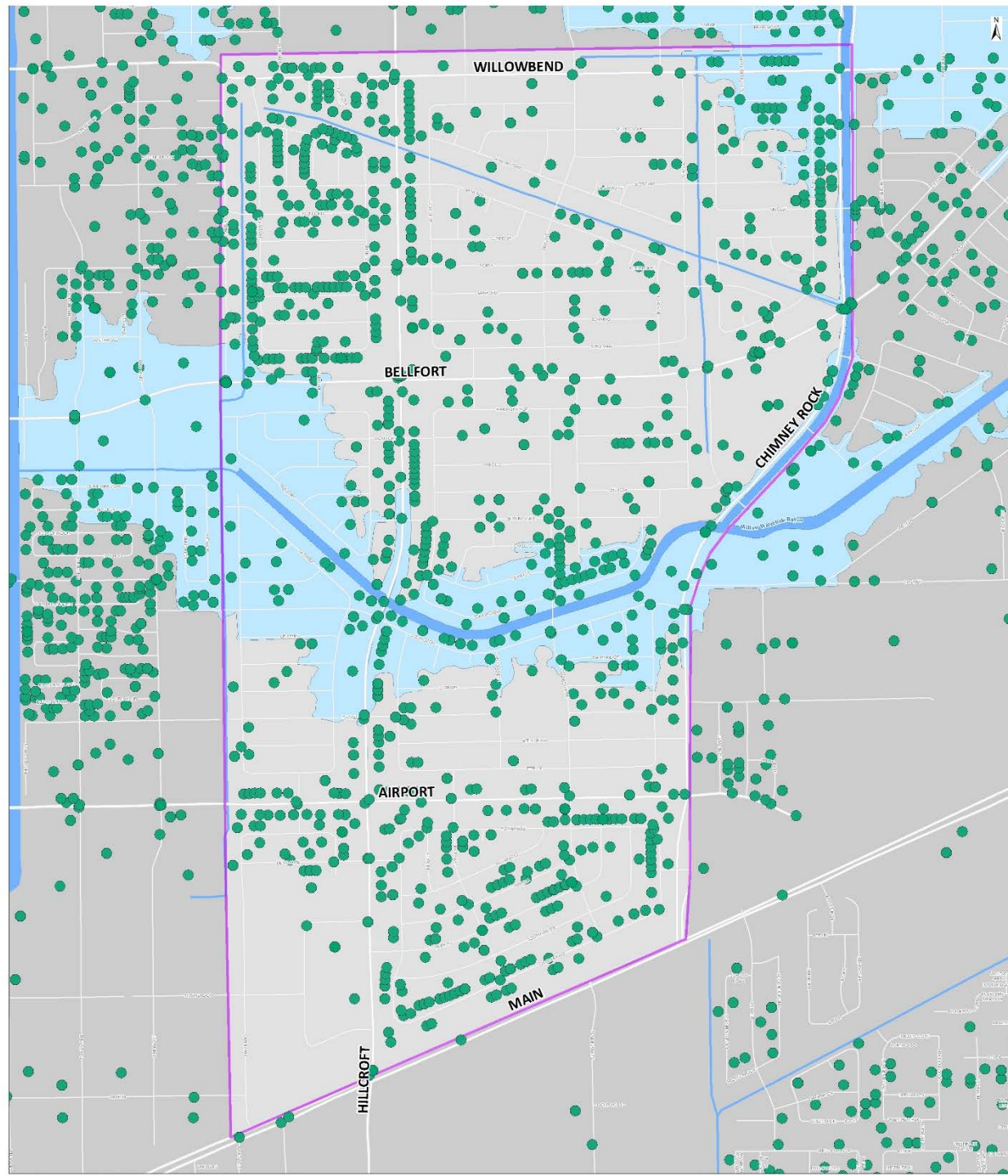
Density of Reported Structural Flooding

- High
- Medium
- Low
- Westbury Area
- Major Road
- Local Road
- Floodway
- 100-year Floodplain

Reported Sanitary/Sewer Problems



Reported Waterline Breaks



- Water Line Breaks
- Westbury Area
- 100-year Floodplain
- Major Road
- Local Road
- Stream

2017-2021 CAPITAL IMPROVEMENT PLAN (\$ Thousands)

CITY OF HOUSTON - STORM DRAINAGE SYSTEM

Project: Westbury Area Drainage and Paving	Project No.	M-410028		
Project Description				
Project provides for the ROW acquisition, design and construction of storm drainage improvements, necessary concrete paving, curbs, sidewalks, driveways, and underground utilities. This project includes nine (9) sub-projects.	City Council District			
	Location	K	Key Map	530Y,531W,531X,570D,570H,571A,571E,571J
	Served		Location Code	
	Category		Sub-Cat	
Project Justification				
The project addresses a need identified and prioritized through the ReBuild Houston Process utilizing a worst first methodology, objective data and benefit/cost analysis. The project will be designed and constructed to improve drainage of streets and reduce the risk of structural flooding.	Units			
	Start Year			

Project Allocation	Previous Appropriations	Fiscal Year Planned Appropriations					2017 - 2021	Project Total
		2017	2018	2019	2020	2021		
Design		1,388					1,388	1,388
Construction					5,267		5,267	5,267
Total Allocation		1,388			5,267		6,654	6,654
Source of Funds:								
4042 - Storm Drainage DDSRF		1,388			3,990		5,378	5,378
8500 - Water & Sewer Cons. Const. Fund					1,276		1,276	1,276
Total Funds		1,388			5,267		6,654	6,654



ReBuild Houston Goals



Reduce impact of flooding

Improve mobility

Quality of life

BREAKOUT GROUP DISCUSSION

Who, what, where, when, why and how?

EXAMPLE QUESTIONS TO DISCUSS

What is being used (Points of Interest)

- Schools, Community Centers, Churches, etc.
- Bus stops
- Sidewalks

Who uses it?

- School buses
- Metro Buses
- Pedestrians - School children, elderly, dog walkers, joggers
- Cars

How is it used?

- On-street parking
- Temporary waiting/pick up area
- Jogging/dog walking route
- Cars cutting through on your street to avoid the main road?

When – what time of day?

- After school, weekends, early mornings, etc.



Example Street Cross Section

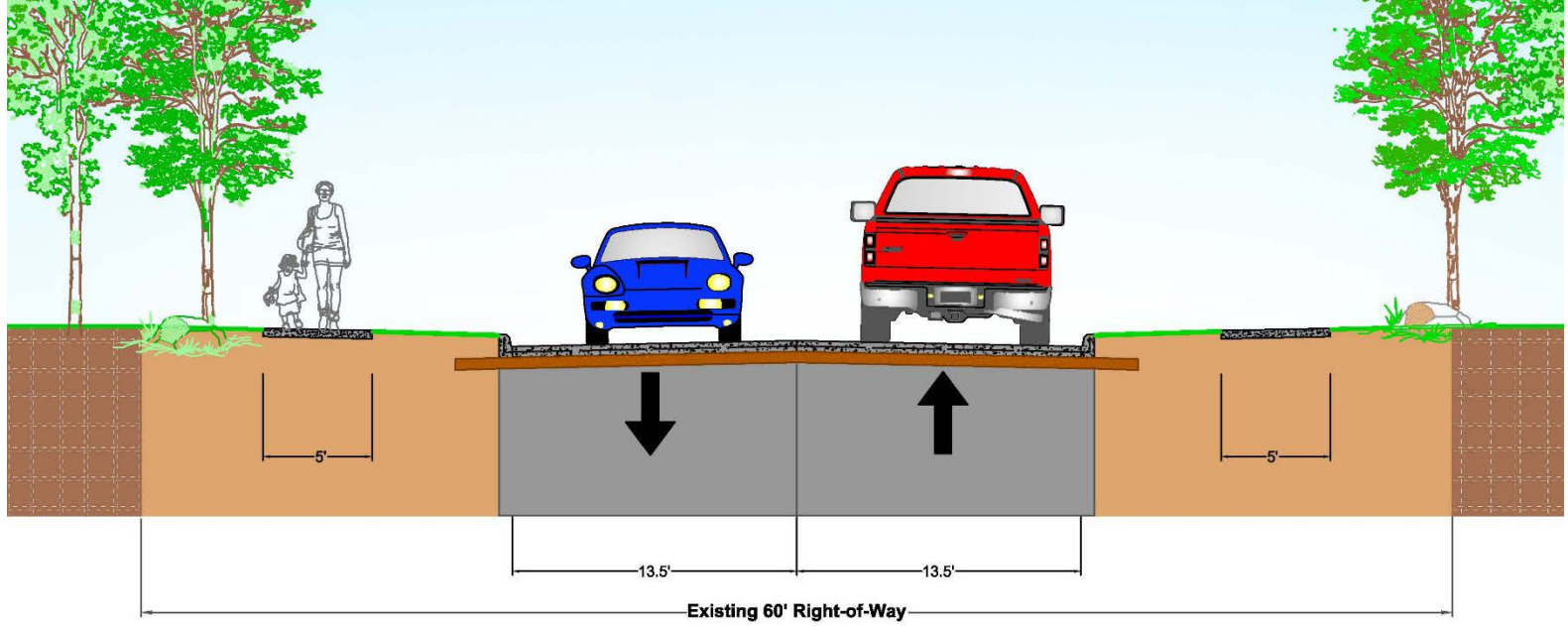
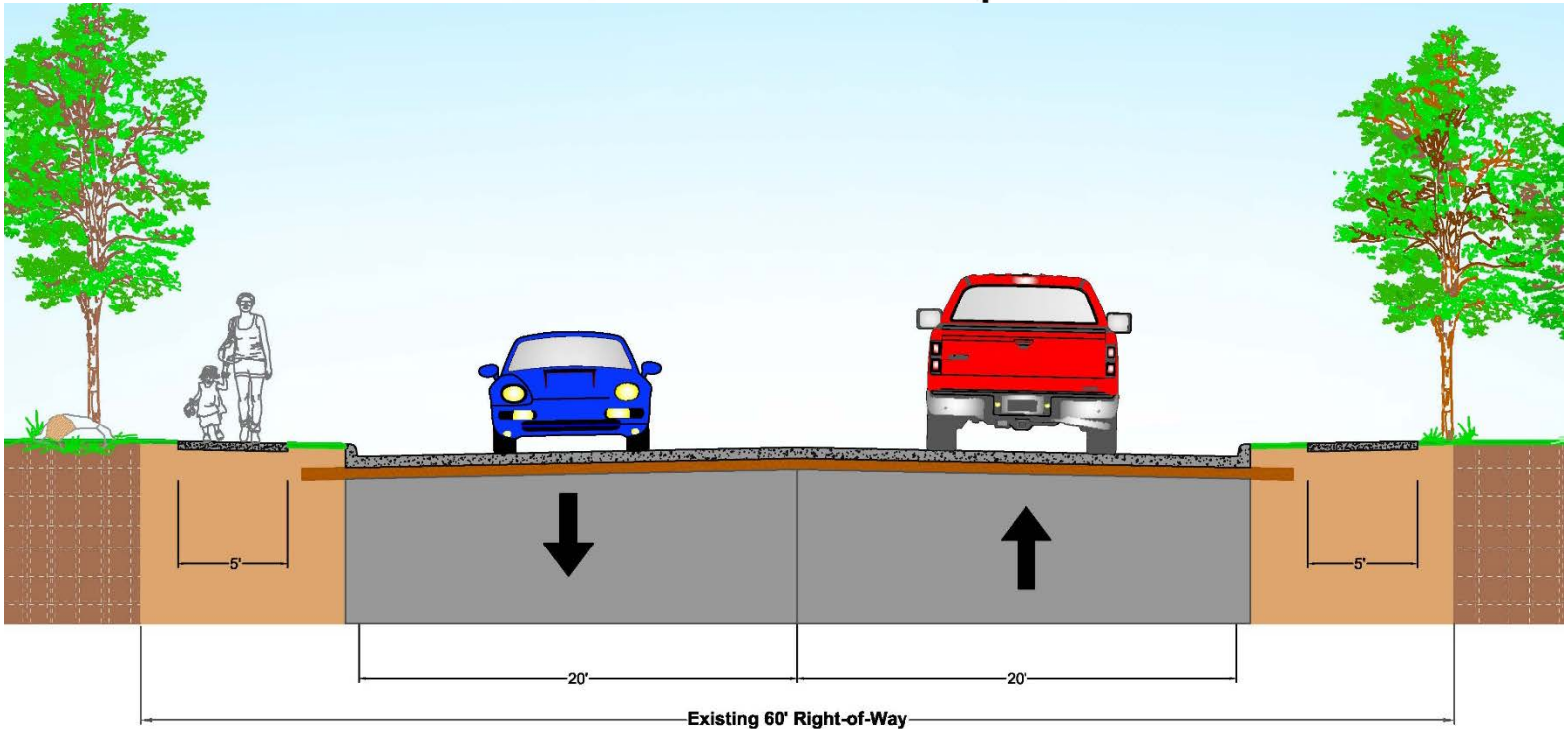


Exhibit - For Discussion Purposes

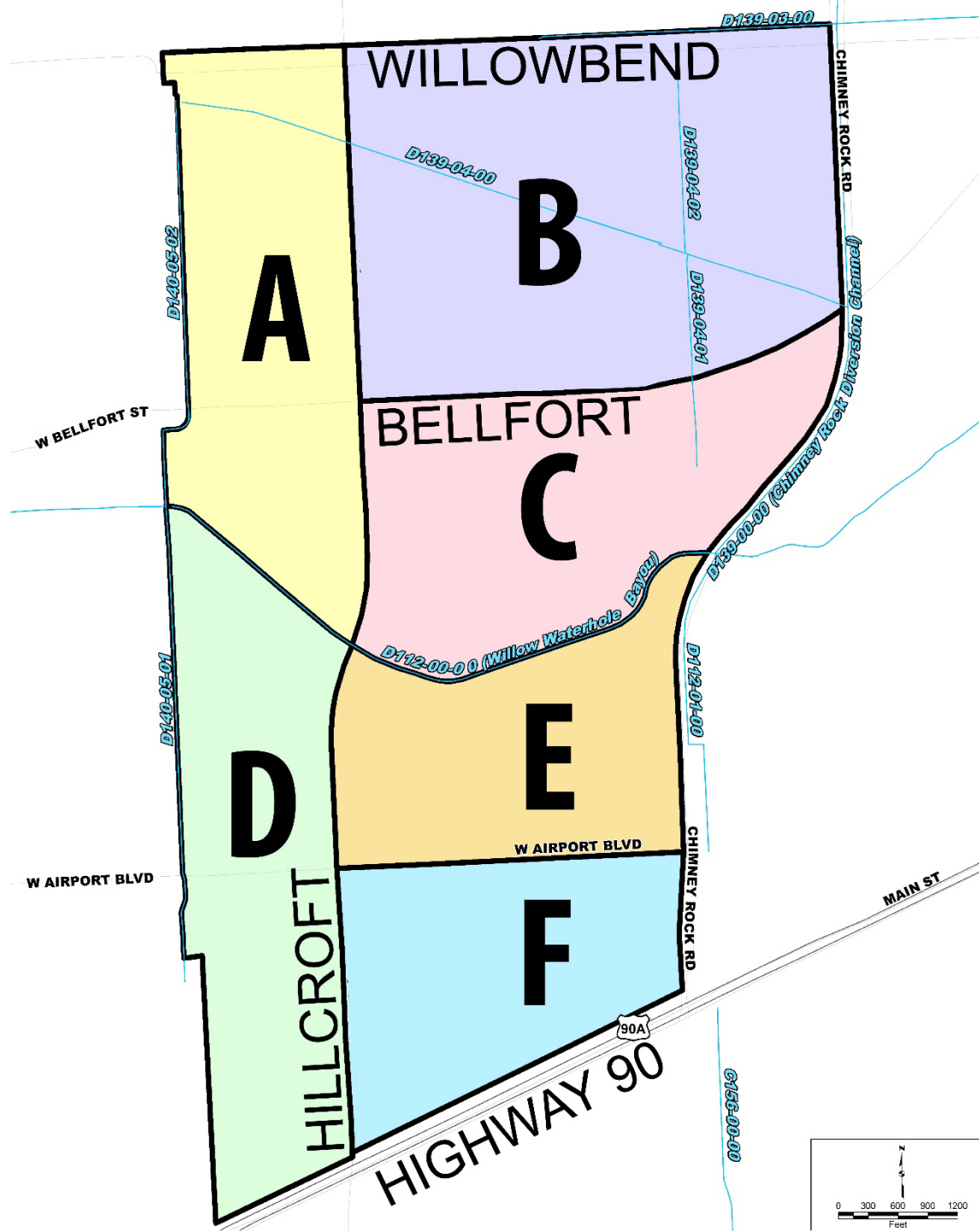




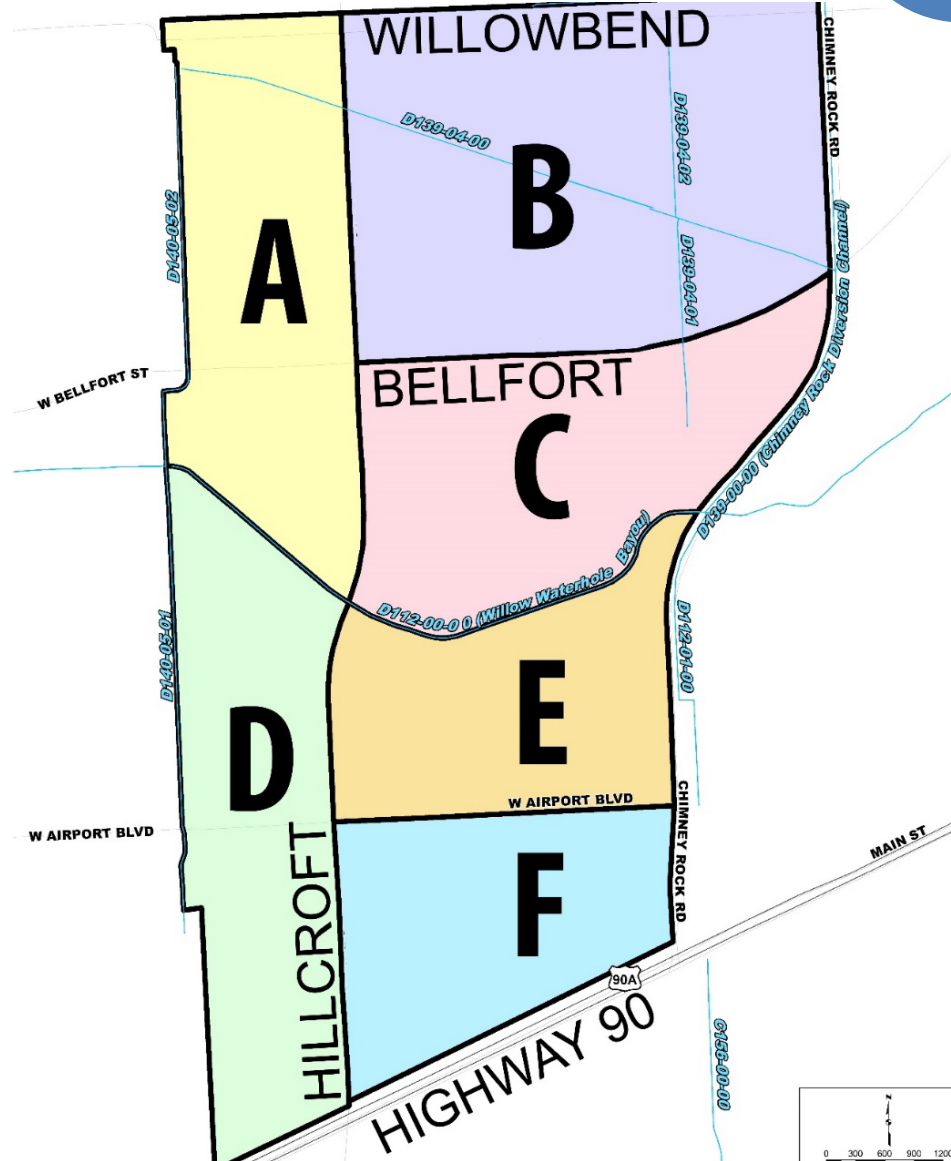
PLEASE FIND YOUR BREAKOUT GROUP



BREAK-OUT GROUPS



What We Heard



We Want Your Input

Fill out a comment card tonight

Or email us your comments at:
pweplanning@houstontx.gov
www.RebuildHouston.org

YOUR INPUT BY
MAY 31, 2016
WILL HELP US STAY ON SCHEDULE

