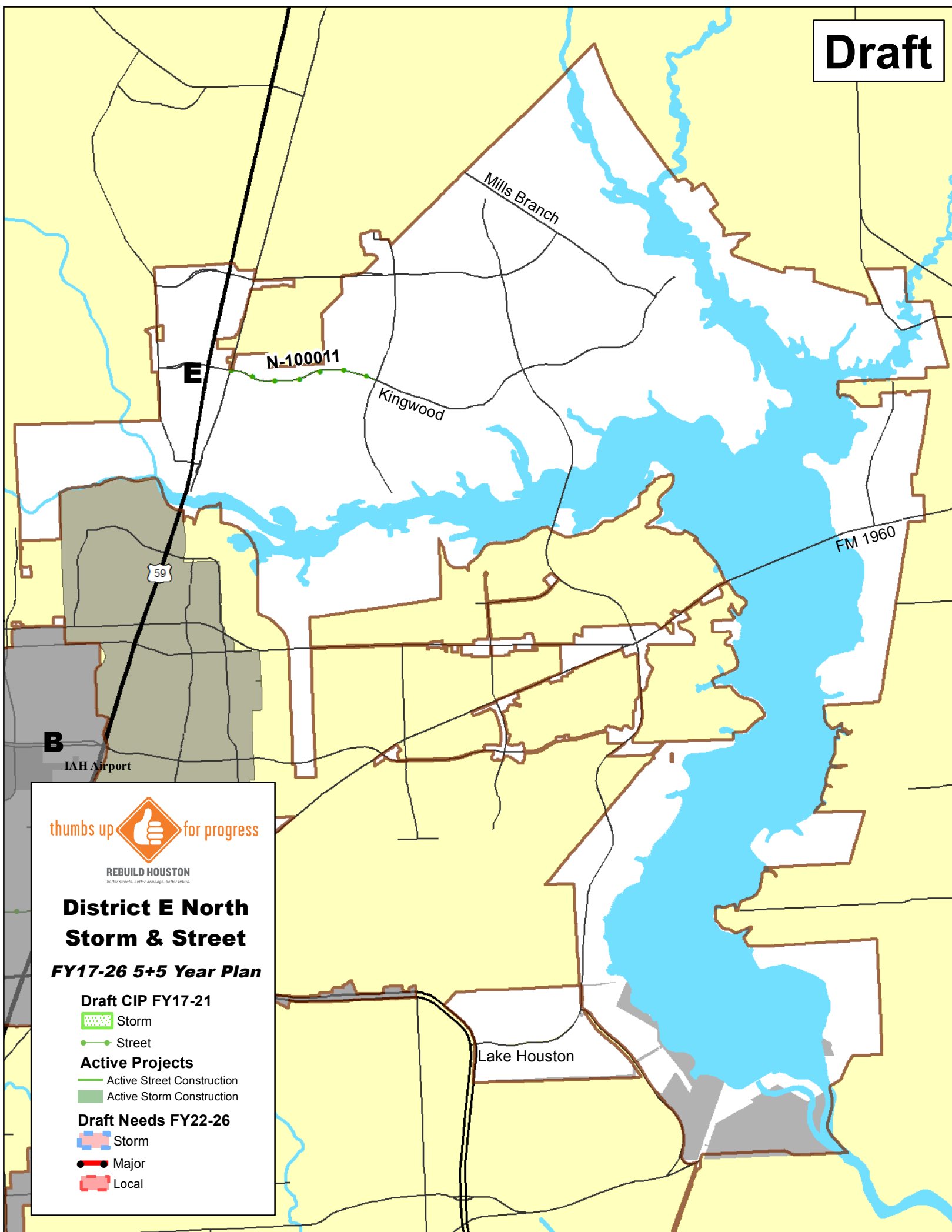
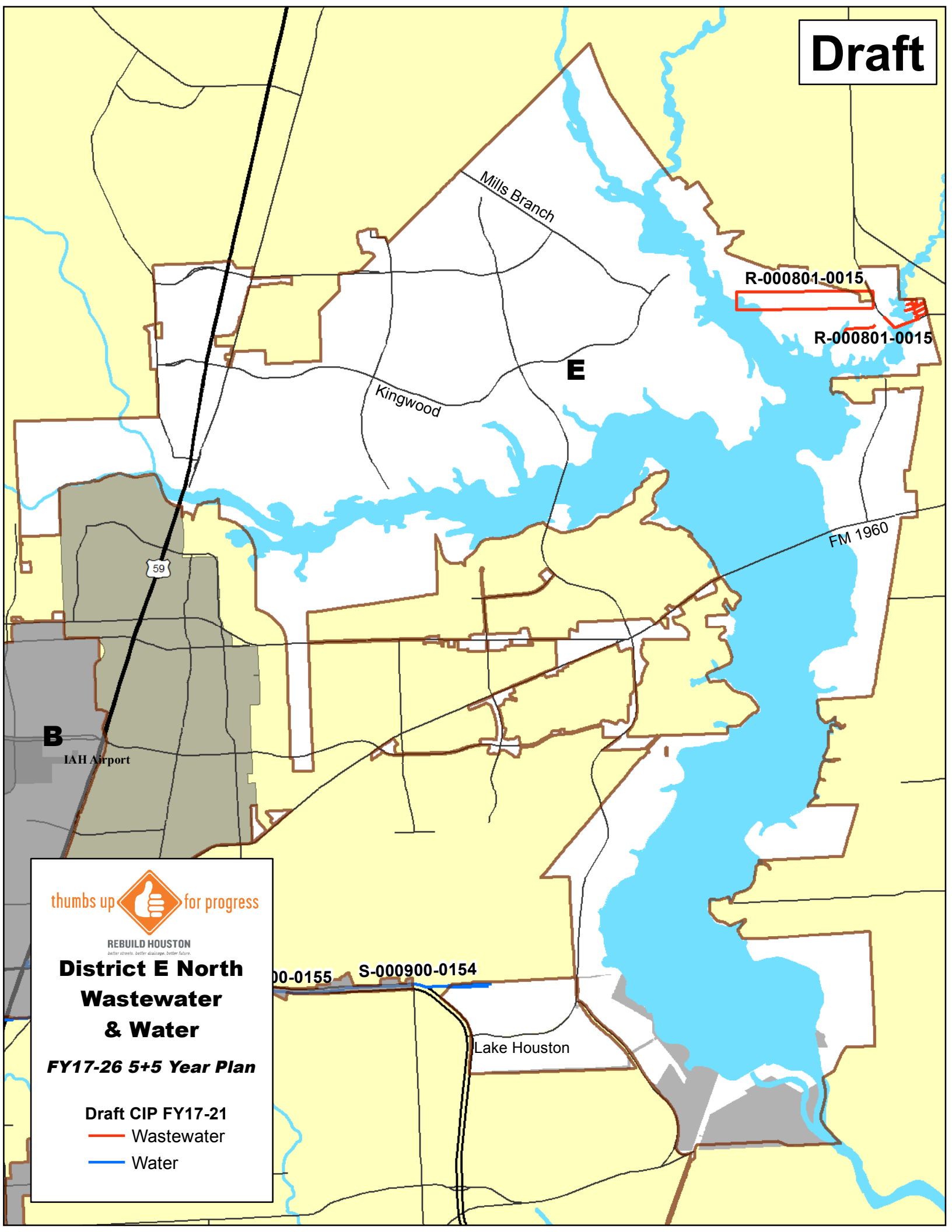


Draft



Draft





## DISTRICT E

Project Viewer: [www.pwecip.houstontx.gov](http://www.pwecip.houstontx.gov) \* Email: [pwecip@houstontx.gov](mailto:pwecip@houstontx.gov)

### Storm Drainage

FY17-21 Storm Drainage Projects		
Project No.	Construction Projects	Est. Construction Start
M-410006-0001	Arlington Heights Area Drainage Improvements (Edgebrook Drive to Parliament Dr, Galveston Rd to S. Shaver)	FY18
M-410006-0002	Arlington Heights	FY20
M-410007-0001	Gulfway Terrace Sec 1, Acre Homes Area Drainage (Hinds St. to I-45, Vennard Rd to N. Broadway St.)	FY19
M-410008-0001	Freeway Manor South of Edgebrook Dr.	FY19
M-410010-0001	Freeway Manor North	FY19

### Street & Traffic Control

FY17-21 Street & Traffic Control Projects		
Project No.	Construction Projects	Est. Construction Start
N-100011-0001	Kingwood from Loop 494 to Ladbrook	FY20

### Water

FY17-21 Water Projects		
Project No.	Construction Projects	Est. Construction Start
S-000035-0199	Water Line Replacement in Harrisburg	FY16
S-000900-0143	South East Water Purification Plant Discharge Waterline, Segment 2	FY20
S-000900-0144	South East Water Purification Plant Discharge Waterline, Segment 3	FY20
S-000900-0145	South East Water Purification Plant Discharge Waterline, Segment 4	FY20
S-000900-0146	South East Water Purification Plant Discharge Waterline, Segment 5	FY21
S-000900-0147	South East Water Purification Plant Discharge Waterline, Segment 6	FY21
S-000900-0154	108-inch WL along City easements from NEWPP to Ralston Rd (99A-1)	FY18
S-000902-0001	60-inch Raw Waterline Rehabilitation at East Water Purification Plant	FY21
S-000902-0132	84-inch Water Line Interconnection at East Water Purification Plant (EWPP)	Under Construction



Project Viewer: [www.pwecip.houstontx.gov](http://www.pwecip.houstontx.gov) \* Email: [pwecip@houstontx.gov](mailto:pwecip@houstontx.gov)

### Wastewater

FY17-21 Wastewater Projects		
Project No.	Construction Projects	Est. Construction Start
R-000801-0014	Lake Houston Package 2, Plantation Hill and Hidden Echo Internal Sanitary Sewer Improvement	FY17
R-000801-0015	Magnolia Point Sanitary Sewer Improvements Package 3.	FY18

# Public Works and Engineering

## ... In Your District



### District E Council Member Dave Martin



#### *Key Projects Complete - 2015*

- Kingwood Drive: Green Oak Drive To Sorters-McClelland Road - approximately two miles connecting Kingwood to Lone Star College-Kingwood
- Northpark at Hidden Pines: Intersection Redesign & Street Safety Improvements

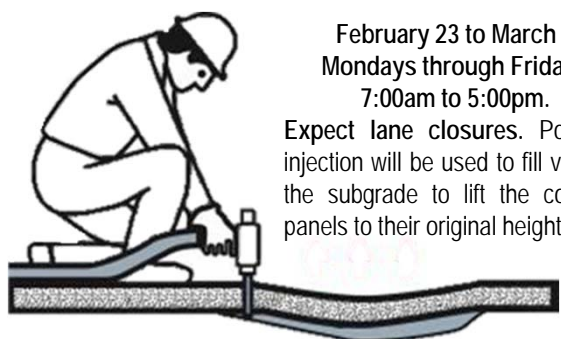
#### *Key Projects in Construction - 2016*

- Bridge Rehab/Replacement - West Houston Parkway Bridge at San Jacinto River - \$955,465
- Sidewalk - Northpark Drive to Glade Valley

#### *Key Projects in Design*

- Kingwood Drive Expansion - Loop 464 to Woodland Hills - \$12 M. Construction planned to start late 2018
- Wastewater Main Replacement Kingwood Drive - Woodland Hills to Shorelake Drive - \$5.3 M
- Wastewater Main Replacement Kingwood Drive - W. Lake Houston Pkwy to west of Forest Garden Drive - \$5.3 M

#### Kingwood Drive Pavement Separation Restoration



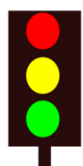
February 23 to March 7  
Mondays through Fridays  
7:00am to 5:00pm.

Expect lane closures. Polymer-injection will be used to fill voids in the subgrade to lift the concrete panels to their original heights.

Additional maintenance may include repairs with asphalt. (Note: Polymer injections are not designed to improve or correct drainage issues.)

District E Maintenance in 2015	Quantity	
Concrete Pour	1,373	Cubic Feet
Regrade Roadside Ditch	29,466	Feet
Clean/Flush Culverts	867	Feet
Bridge Inspections	372	Each
Bridge Repairs	87	Each
Clean Storm Sewer system	1354	Feet
ROW Mowing	1,078	Miles

District E Top 311 Call Issues in 2015	Number	Percent
Water Leak	2,206	19%
Water Service	1,194	10%
Sewer Wastewater	1,192	10%
Traffic Signal Maintenance	824	7%
Street Hazard	818	7%



Traffic signals in the Kingwood area are being updated throughout 2016 to improve traffic flow, increase pedestrian/bicyclist safety, minimize travel times, and reduce auto emissions under the Traffic Signal Performance Improvement Program.



# Public Works and Engineering

## ... Did you know?

**What is a pothole?** A pothole is a hole in the roadway pavement that may vary in size and shape formed when water seeps under the pavement and weakens the road base. As vehicles run over these weakened areas, the pavement breaks up and the hole gets larger. In the city of Houston, a pothole is considered any area of missing or severely deteriorated pavement that is up to about 5 feet by 5 feet. Check out the City's pothole tracker for the latest information: <http://www.houstontx.gov/potholes>

**What is the fastest way to report a street, drainage, traffic, water or waste water service issue?** Call 311 or download the mobile app on your smart phone. The 311 operators know what information to collect and will create a case number used to track the item from start to finish.



**Stop sewer backups - Corral The Grease!** Do not pour fats, oils and grease (FOG) down the kitchen drain. These harden in the sewer pipes, restrict flow and cause sewer backups into your home and into city streets. Other enemies to the system include coffee grounds and filters, paper towels, baby diapers, feminine hygiene products, and plastics. For more information about this program, visit: [www.corralthegrease.org](http://www.corralthegrease.org)

**Protect your home or business against flooding even if not in the floodplain** - Flood insurance is encouraged for all residents and businesses due to Houston's subtropical climate and susceptibility to hurricanes and tropical storms. For more information regarding flood insurance, visit [www.floodsmart.gov](http://www.floodsmart.gov). For residents located in the 100-year floodplain, specialized assistance is available from our Floodplain Management Office which can be reached at 832-394-8854 or [fmo@houstontx.gov](mailto:fmo@houstontx.gov).

### Turn Around Don't Drown®

- Houston's streets are designed to be part of the drainage system when the ditch and storm sewer infrastructure are inundated by periods of heavy, sustained rainfall. Houston is prone to flooding due to its flat terrain, size of the impervious developed areas, slowly-absorbing soil, and potential for thunderstorms, tropical storms and hurricanes.
- Did you know that in certain flooding conditions, a vehicle can be washed away in less than 12 inches of fast-moving floodwater? Most flood-related deaths are due to motorists attempting to cross a flooded low-water crossing or road. Know your flood risk. Avoid travel during intense rainfall – or Turn Around, Don't Drown!



City of Houston Public Works  
and Engineering Department



ReBuild Houston

City of Houston  
Department of Public Works and Engineering  
611 Walker Street  
Houston, TX 77002